

The Preserve at Laguna Ridge
TATE



Elevation A - Spanish

Approx. square feet: 3,400-3,700
Stories: 2
Bedrooms: 4
Garage: 3-car
Plan Number: N34C

The inviting Tate plan features a grand two-story entry, a private study and a formal dining room. You'll also appreciate the convenient mudroom off the well-appointed kitchen with center island and walk-in pantry. Upstairs offers a large loft that can be optioned as a fifth bedroom or a sitting room off the luxurious master suite with private bath and walk-in closet, plus three additional bedrooms.

Available elevations:



Elevation A - Spanish



Elevation B - Italian



Elevation C - French Country

COMMUNITY LOCATION

9996 Avocado Drive
Elk Grove, CA 95757

HOME GALLERY

One Harbor Center, Suite 150
Suisun City, CA 94533
707-416-2800



COMMUNITY LOCATION

9996 Avocado Drive
Elk Grove, CA 95757

HOME GALLERY

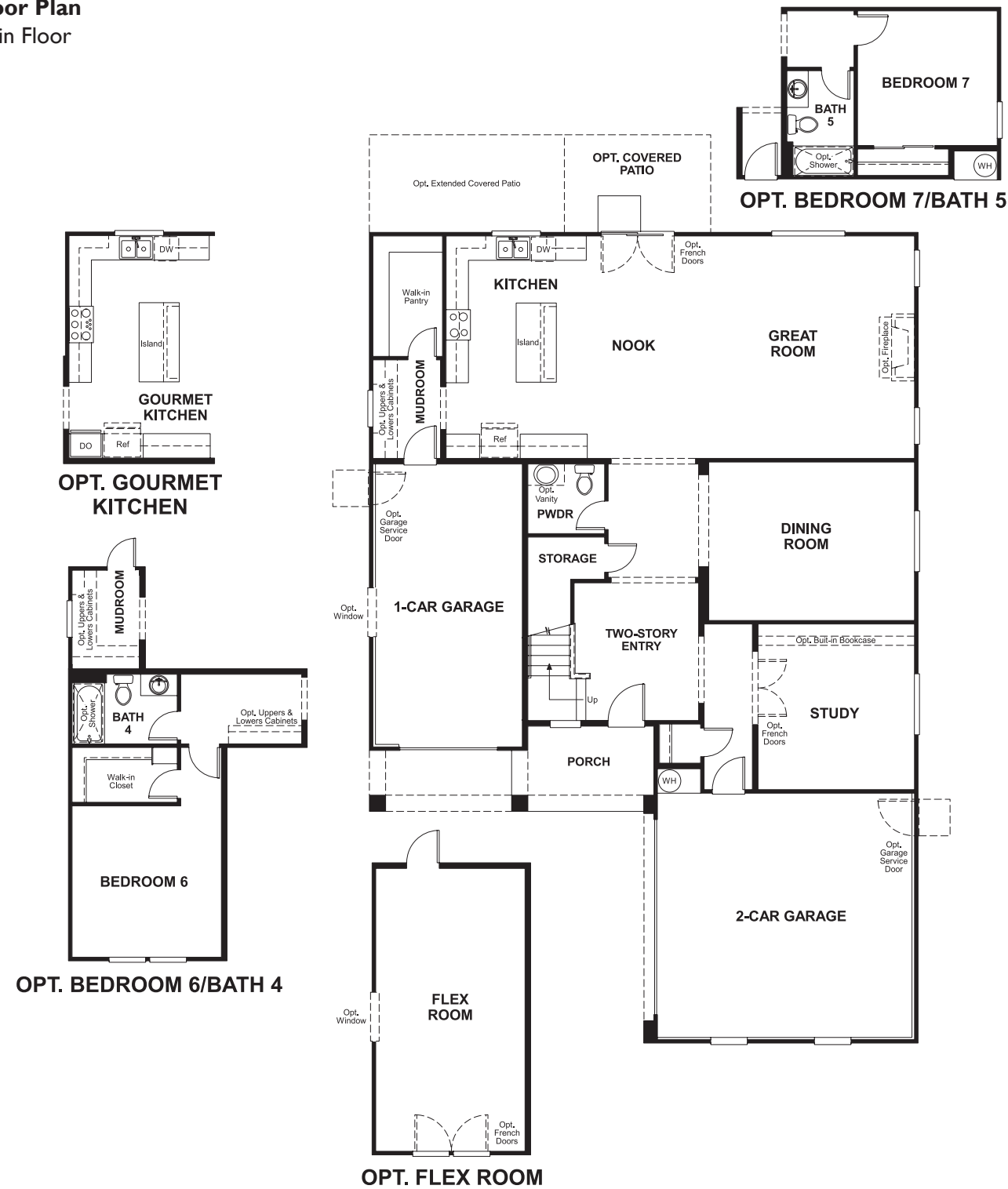
One Harbor Center, Suite 150
Suisun City, CA 94533
707-416-2800



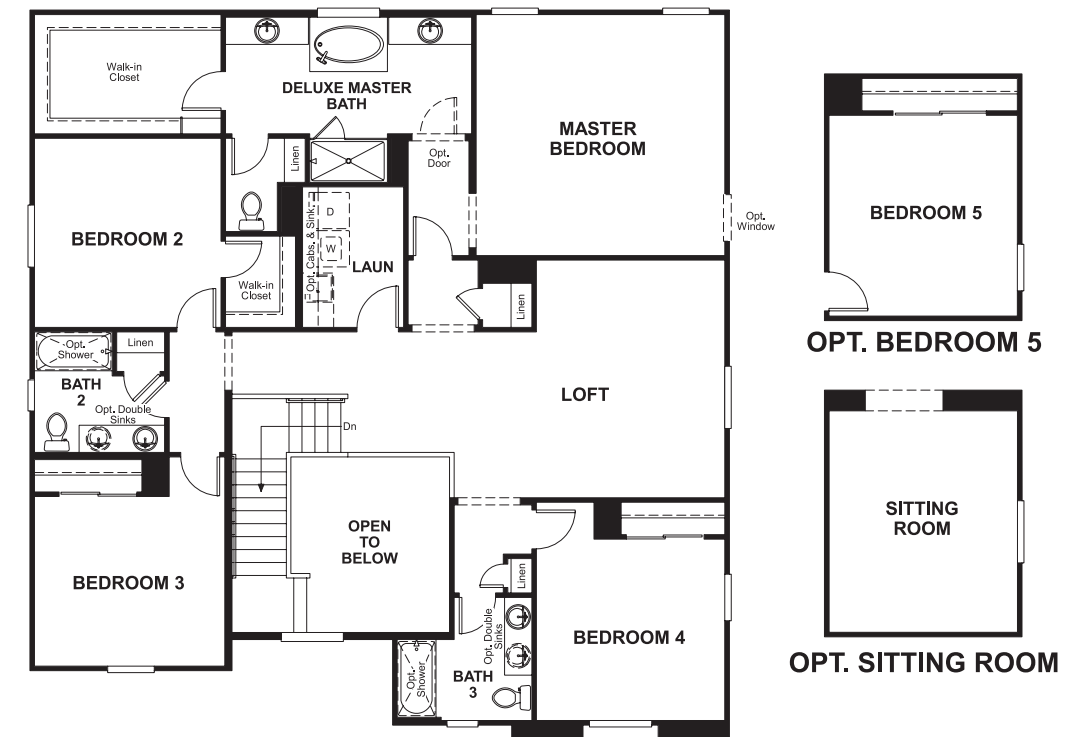
The Preserve at Laguna Ridge
TATE

Approx. square feet: 3,400-3,700
Stories: 2
Bedrooms: 4
Garage: 3-car
Plan Number: N34C

Floor Plan
Main Floor



Floor Plan
Second Floor



**THIS PLAN'S PROJECTED
HERS® INDEX = 63***
Projected Rating Based on Plans – Field Confirmation Required

How does this floor plan rate?
Take a look: **100** = Standard new home* **130** = Typical resale home**
The lower the number, the better! Refer to the RESNET® HERS index brochure or go to www.RESNET.us for details.

What's a HERS® Index? HERS stands for Home Energy Rating System, a system created by RESNET® to measure home energy efficiency.[^]
A Projected HERS index or rating is a computer simulation performed prior to construction by a third-party HERS rater using RESNET-accredited rating software, rated feature and specification data derived from home plans, features and specifications, and other data selected or assumed by the rater. The projected HERS index is approximate and is subject to change without notice. Actual results will vary.

*This information is presented for education purposes only. The HERS index for a confirmed rating will be determined by a third-party HERS rater based on data gathered from on-site observations and, if required, testing of rated features for a home as featured, optioned, located, oriented and/or built.
+Standard new home is based on the RESNET® Reference Home definition with a HERS® index of 100 (based on the 2006 International Energy Conservation Code).
++Typical resale home is based on the U.S. Department of Energy definition with a HERS® index of 130.

[^]RESNET® has developed the HERS® index to indicate the comparative efficiencies of homes. It is no guarantee that energy efficiencies will be achieved.