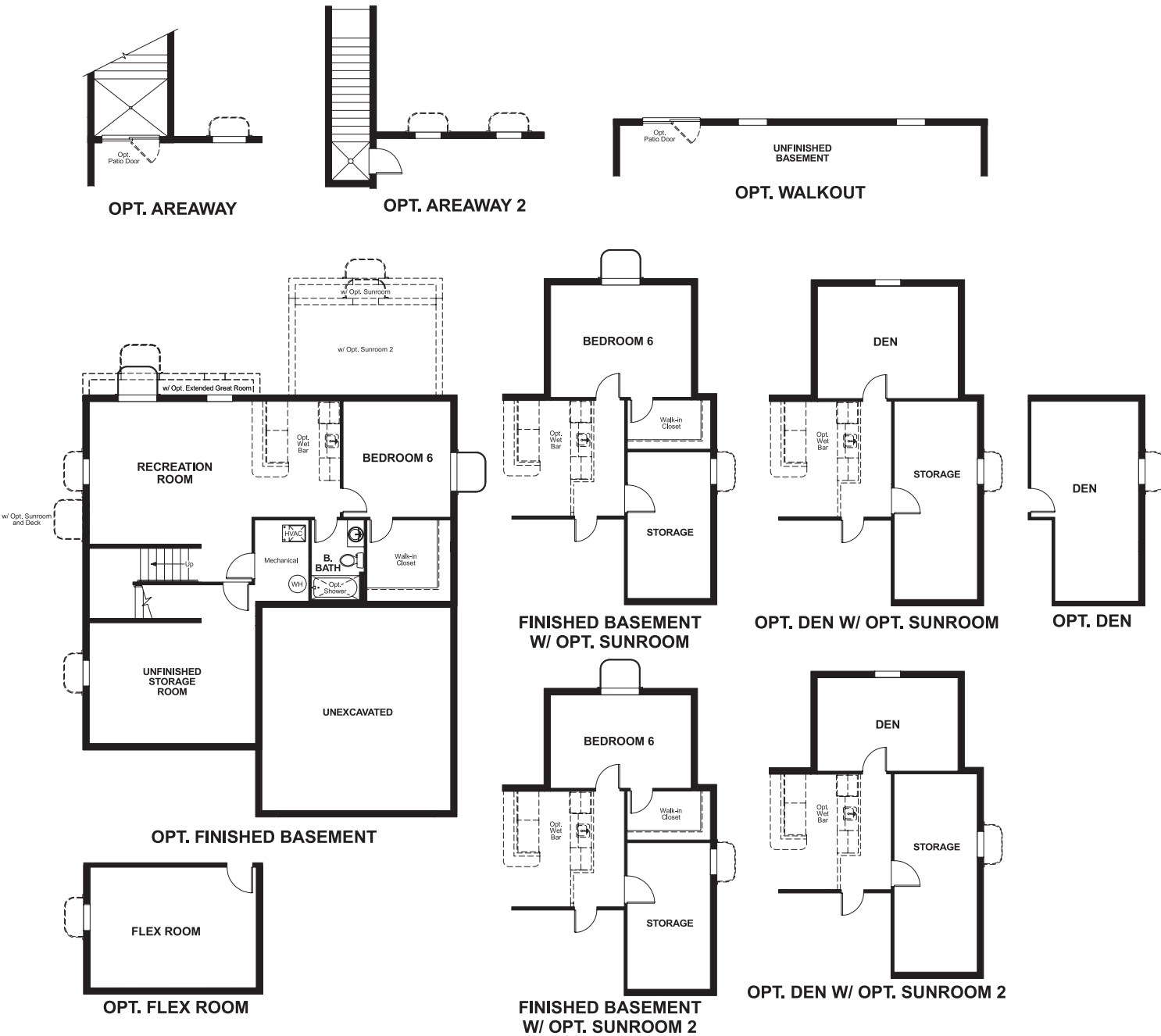


# HEMINGWAY

**Approx. square feet:** 2,450  
**Stories:** 2  
**Bedrooms:** 4 - 6  
**Garage:** 2- to 3-car  
**Plan Number:** M250

## Floor Plan Basement



**Elevation C**

## Available elevations:



**Elevation A**



**Elevation B**



**Elevation C**



**Elevation D**



**Elevation E**



**Elevation F**



**Elevation G**



**Elevation H**



**Elevation J**



**Elevation K**



**Elevation L**

**Approx. square feet:** 2,450  
**Stories:** 2  
**Bedrooms:** 4 - 6  
**Garage:** 2- to 3-car  
**Plan Number:** M250

This plan features an entryway with adjacent flex space that can be personalized to suit your needs. At the back of the home, you'll find a great room with optional corner fireplace, a large kitchen with island and a mudroom with walk-in pantry. An upstairs laundry room and loft complete this home.

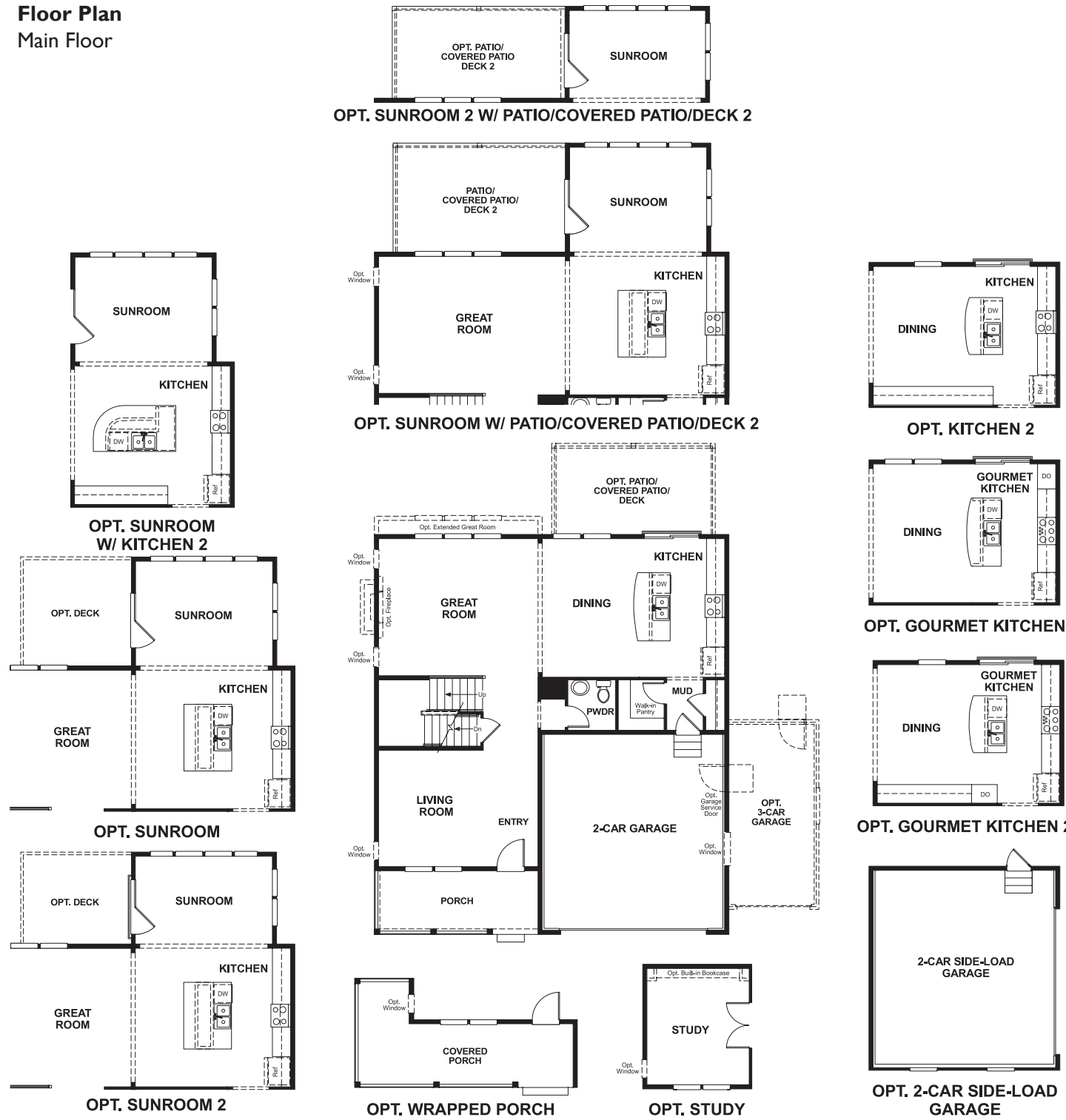


# HEMINGWAY

Approx. square feet: 2,450  
Stories: 2  
Bedrooms: 4 - 6

Garage: 2- to 3-car  
Plan Number: M250

## Floor Plan Main Floor



## Floor Plan Second Floor

