

Whispering Meadows
LILLIAN



Elevation B

Approx. square feet: 2,050
Stories: 2
Bedrooms: 3
Garage: 2-car
Plan Number: W20L

From its covered porch to its open layout, the Lillian plan was designed with your livability in mind. On the main floor, the great room with optional fireplace opens to a large dining room, which flows into an inviting kitchen with central island, walk-in pantry and optional gourmet or chef's features. Upstairs, the master suite can be extended to include an optional retreat. Other options for personalization include a deluxe master bath and a loft.

Available elevations:



Elevation B



Elevation C



Elevation E

COMMUNITY LOCATION

3215 102nd Avenue Northeast
Lake Stevens, WA 98258
425-654-0132

HOME GALLERY

20829 72nd Avenue South, Suite 115
Kent, WA 98032
253-446-7277



COMMUNITY LOCATION

3215 102nd Avenue Northeast
Lake Stevens, WA 98258
425-654-0132

HOME GALLERY

20829 72nd Avenue South, Suite 115
Kent, WA 98032
253-446-7277

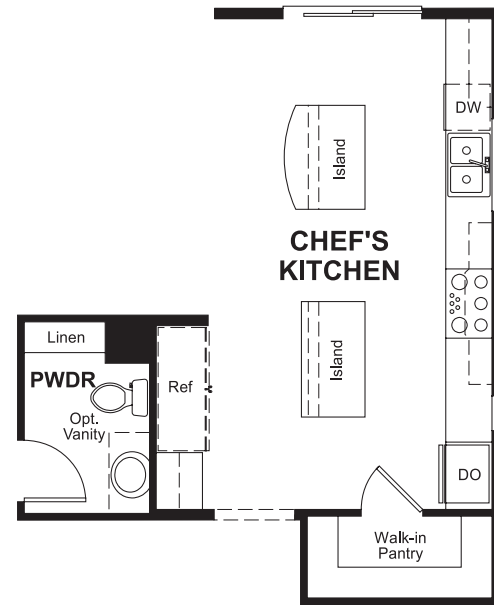


Whispering Meadows
LILLIAN

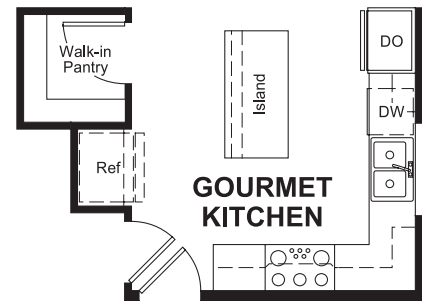
Approx. square feet: 2,050
Stories: 2
Bedrooms: 3

Garage: 2-car
Plan Number: W20L

Floor Plan
Main Floor

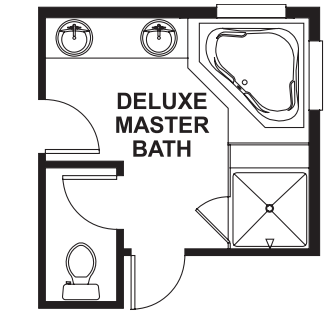
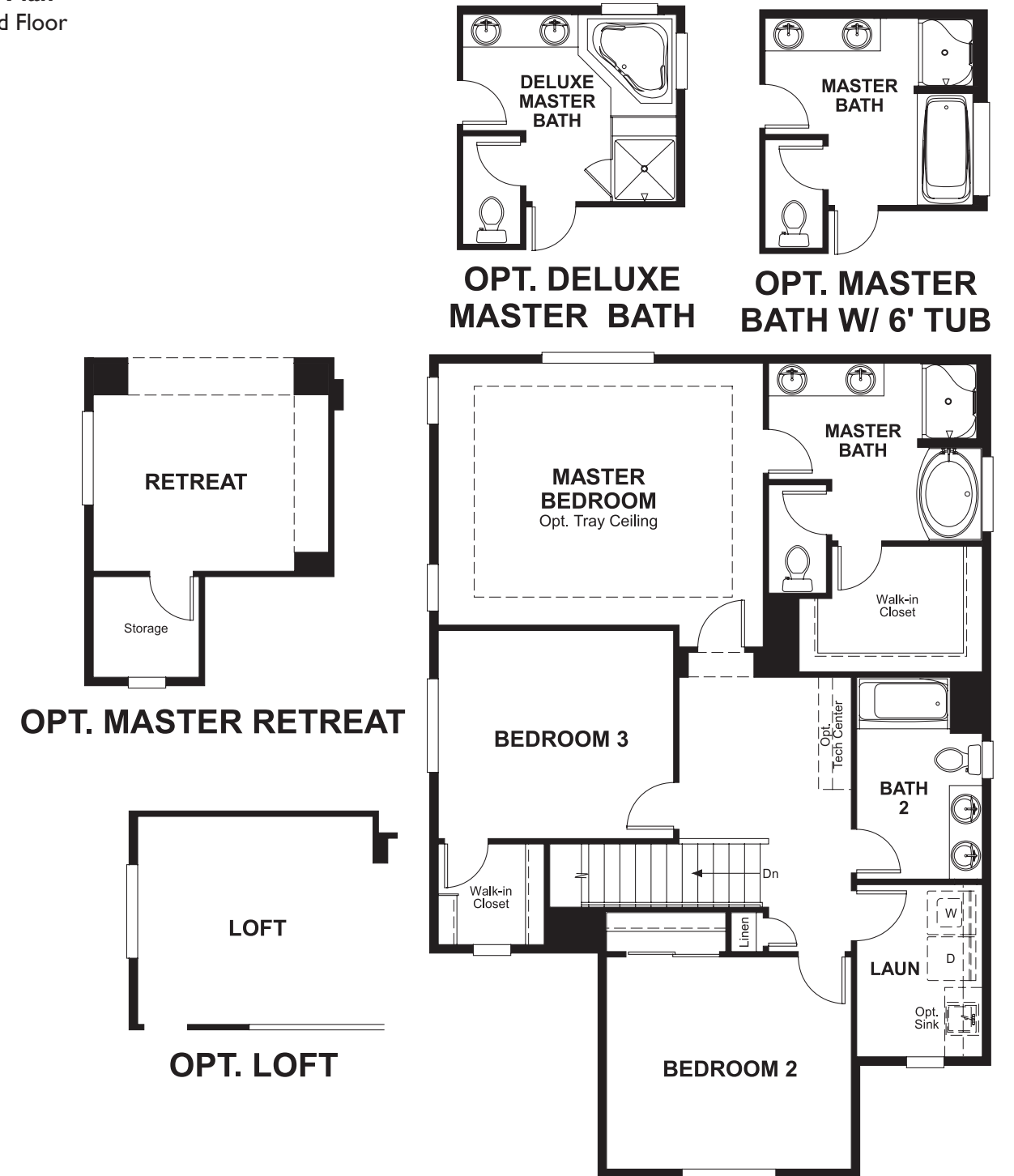


OPT. CHEF'S KITCHEN

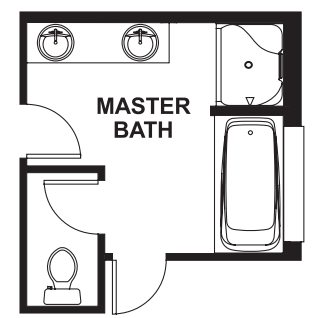


OPT. GOURMET KITCHEN

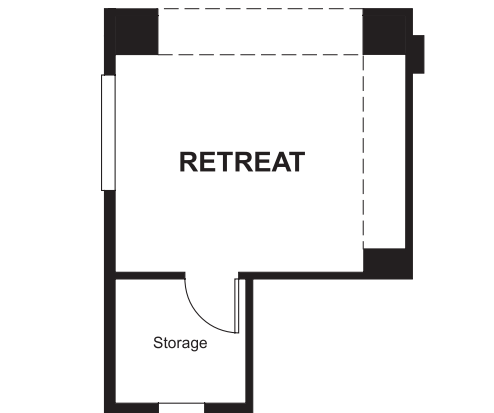
Floor Plan
Second Floor



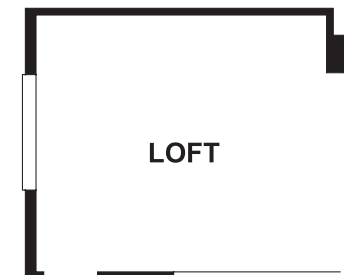
OPT. DELUXE MASTER BATH



OPT. MASTER BATH W/ 6' TUB



OPT. MASTER RETREAT



OPT. LOFT

THIS PLAN'S PROJECTED HERS® INDEX = 69*
Projected Rating Based on Plans – Field Confirmation Required

How does this floor plan rate?
Take a look: **100** = Standard new home* **130** = Typical resale home**
The lower the number, the better! Refer to the RESNET® HERS index brochure or go to www.RESNET.us for details.

What's a HERS® Index? HERS stands for Home Energy Rating System, a system created by RESNET® to measure home energy efficiency.[^]
A Projected HERS index or rating is a computer simulation performed prior to construction by a third-party HERS rater using RESNET-accredited rating software, rated feature and specification data derived from home plans, features and specifications, and other data selected or assumed by the rater. The projected HERS index is approximate and is subject to change without notice. Actual results will vary.

*This information is presented for education purposes only. The HERS index for a confirmed rating will be determined by a third-party HERS rater based on data gathered from on-site observations and, if required, testing of rated features for a home as featured, optioned, located, oriented and/or built.
+Standard new home is based on the RESNET® Reference Home definition with a HERS® index of 100 (based on the 2006 International Energy Conservation Code).
++Typical resale home is based on the U.S. Department of Energy definition with a HERS® index of 130.

[^]RESNET® has developed the HERS® index to indicate the comparative efficiencies of homes. It is no guarantee that energy efficiencies will be achieved.