

Huntington at Mountain House
CLARISSA



Elevation A

Available elevations:



Elevation A



Elevation B



Elevation D

Approx. square feet: 3,250-3,550

Stories: 2

Bedrooms: 5 - 6

Garage: 2- to 3-car

Plan Number: N664

Inside the Clarissa floor plan you'll find an expansive great room, dining room and kitchen, enhanced by a wide breakfast-bar island and a fireplace. A main-floor bedroom and full, private bath makes a great guest space, especially for those with mobility concerns. It can even be extended to include a living room and kitchenette for added hospitality. Upstairs, you'll find a loft and the rest of the bedrooms, including a master suite with two walk-in closets and a deluxe bath. Gourmet kitchen options and a bedroom or master retreat in lieu of the loft are available.

COMMUNITY LOCATION

437 West Morgan Court
Mountain House, CA 95391
209-650-7022

HOME GALLERY

One Harbor Center, Suite 150
Suisun City, CA 94585
707-389-7016



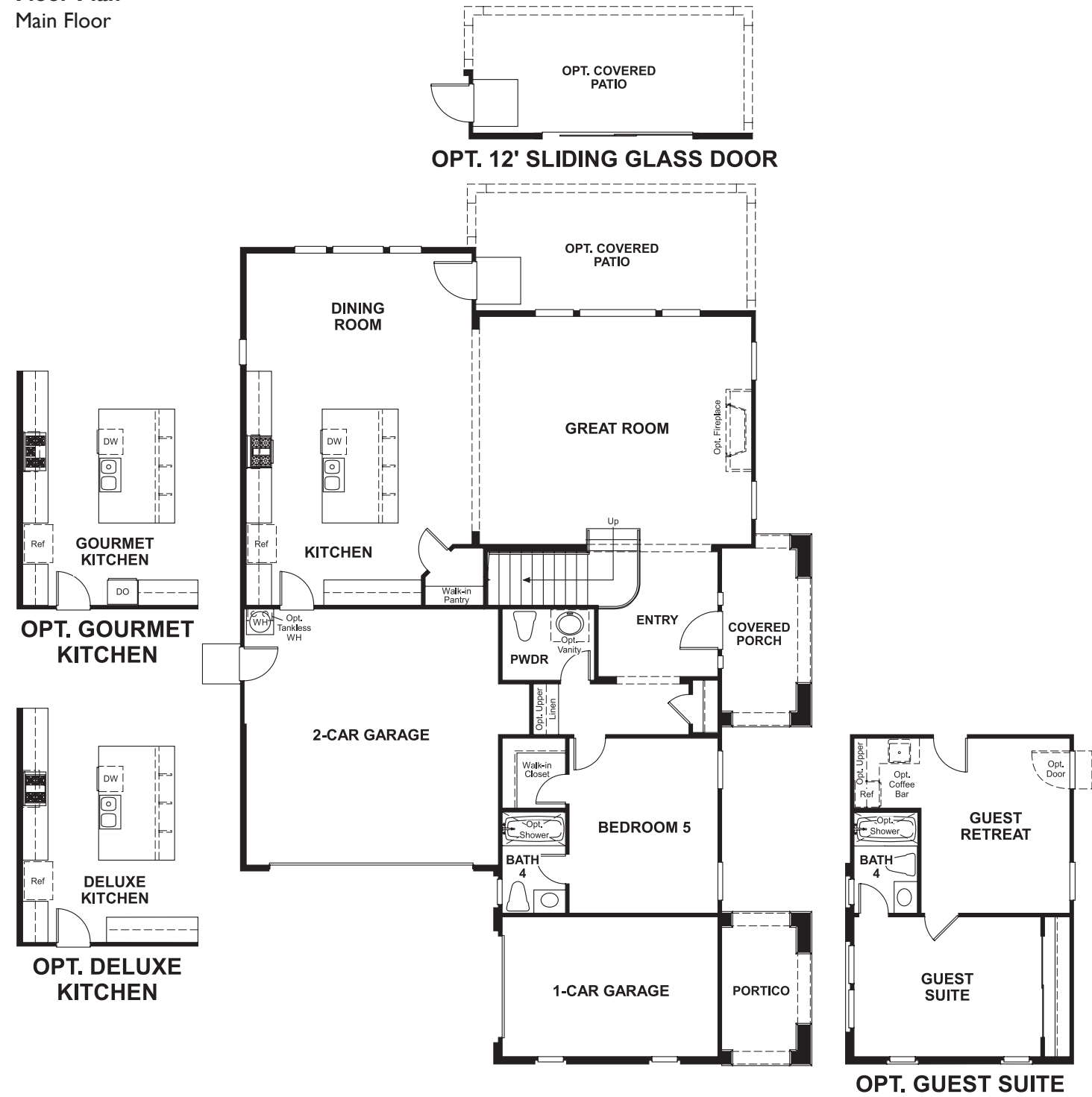
COMMUNITY LOCATION

437 West Morgan Court
Mountain House, CA 95391
209-650-7022

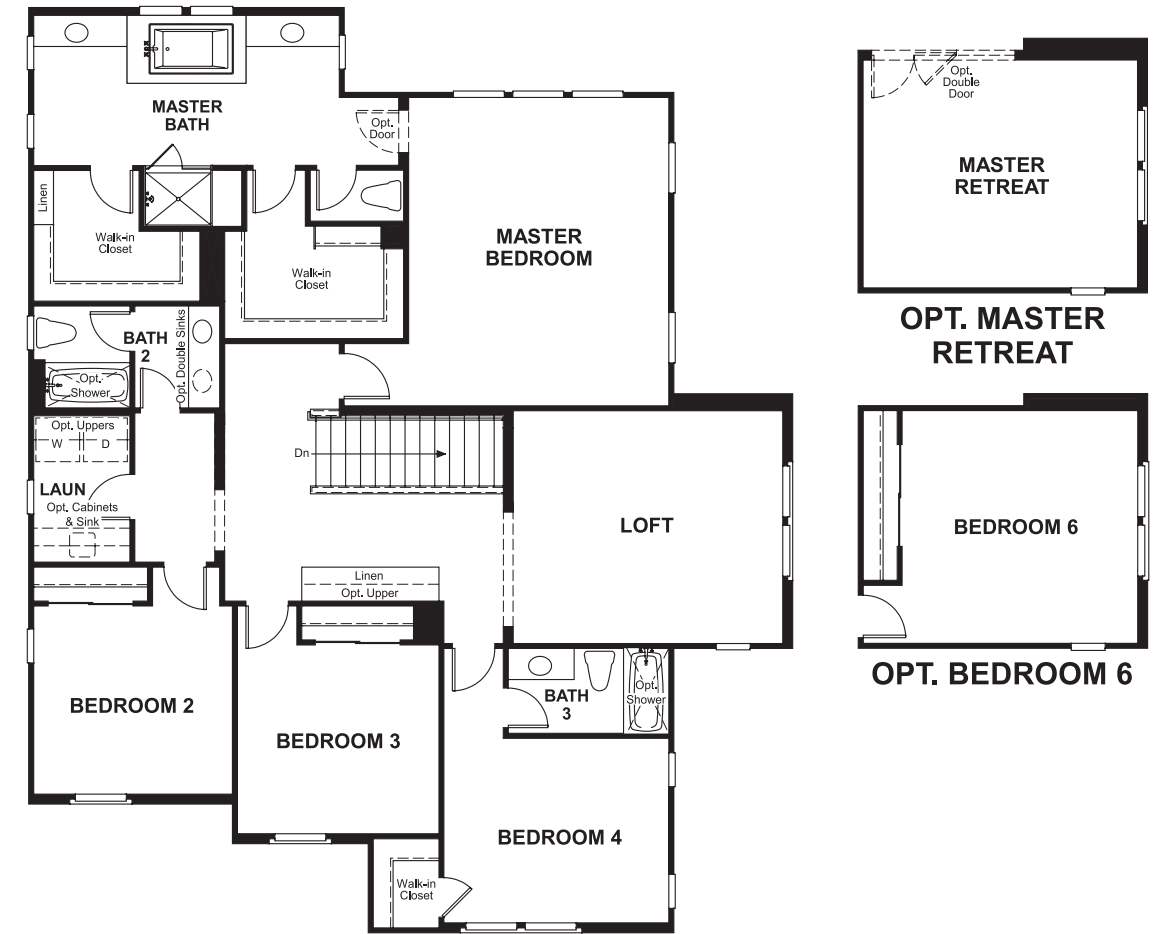
HOME GALLERY

One Harbor Center, Suite 150
Suisun City, CA 94585
707-389-7016

Floor Plan
Main Floor



Floor Plan
Second Floor



THIS PLAN'S PROJECTED HERS® INDEX = 64*
Projected Rating Based on Plans – Field Confirmation Required

How does this floor plan rate?
Take a look: **100** = Standard new home* **130** = Typical resale home**
The lower the number, the better! Refer to the RESNET® HERS index brochure or go to www.RESNET.us for details.

What's a HERS® Index? HERS stands for Home Energy Rating System, a system created by RESNET® to measure home energy efficiency.[^]
A Projected HERS index or rating is a computer simulation performed prior to construction by a third-party HERS rater using RESNET-accredited rating software, rated feature and specification data derived from home plans, features and specifications, and other data selected or assumed by the rater. The projected HERS index is approximate and is subject to change without notice. Actual results will vary.

*This information is presented for education purposes only. The HERS index for a confirmed rating will be determined by a third-party HERS rater based on data gathered from on-site observations and, if required, testing of rated features for a home as featured, optioned, located, oriented and/or built.
+Standard new home is based on the RESNET® Reference Home definition with a HERS® index of 100 (based on the 2006 International Energy Conservation Code).
++Typical resale home is based on the U.S. Department of Energy definition with a HERS® index of 130.

[^]RESNET® has developed the HERS® index to indicate the comparative efficiencies of homes. It is no guarantee that energy efficiencies will be achieved.