

McKenna Park
ALAMEDA



Elevation A

Approx. square feet: 2,400
Stories: 2
Bedrooms: 4 - 5
Garage: 3-car
Plan Number: S685

The Alameda floor plan has a spacious open great room, a dining room with a courtyard view, a well-appointed kitchen with walk-in pantry, a convenient main-floor bedroom and a full bath. Upstairs you'll find a loft and three additional bedrooms—each with its own bathroom. The large master bath has a separate tub and shower, double sinks and a roomy walk-in closet.

Available elevations:



Elevation A



Elevation B



Elevation C

COMMUNITY LOCATION

6928 Ivy Drive
Chino, CA 91710
909-942-6781

HOME GALLERY

5171 California Avenue
Irvine, CA 92617
800-852-9714



COMMUNITY LOCATION

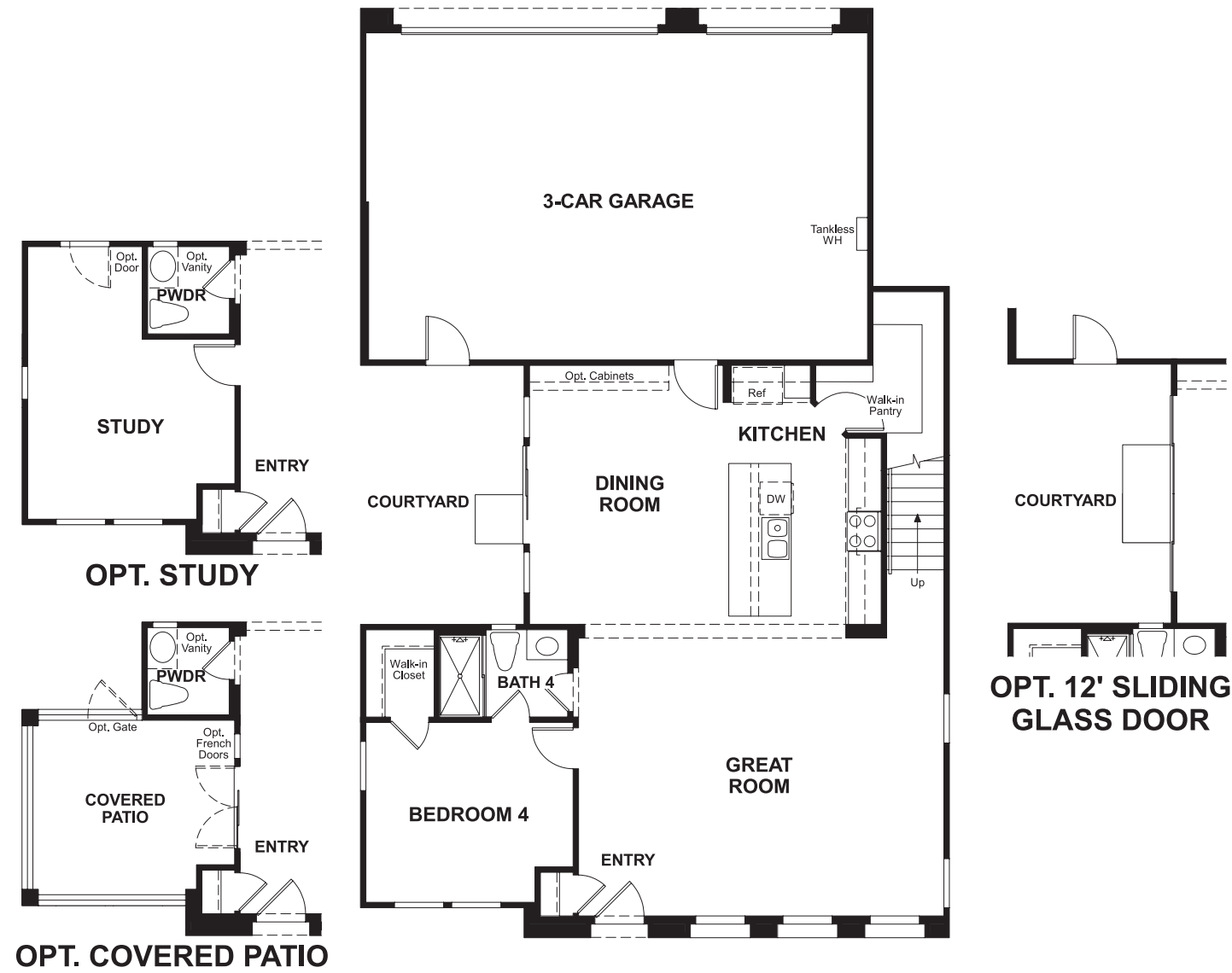
6928 Ivy Drive
Chino, CA 91710
909-942-6781

HOME GALLERY

5171 California Avenue
Irvine, CA 92617
800-852-9714



Floor Plan
Main Floor



Floor Plan
Second Floor



**THIS PLAN'S PROJECTED
HERS® INDEX = 69***
Projected Rating Based on Plans – Field Confirmation Required

How does this floor plan rate?
Take a look: **100** = Standard new home* **130** = Typical resale home**
The lower the number, the better! Refer to the RESNET® HERS index brochure or go to www.RESNET.us for details.

What's a HERS® Index? HERS stands for Home Energy Rating System, a system created by RESNET® to measure home energy efficiency.[^]
A Projected HERS index or rating is a computer simulation performed prior to construction by a third-party HERS rater using RESNET-accredited rating software, rated feature and specification data derived from home plans, features and specifications, and other data selected or assumed by the rater. The projected HERS index is approximate and is subject to change without notice. Actual results will vary.

*This information is presented for education purposes only. The HERS index for a confirmed rating will be determined by a third-party HERS rater based on data gathered from on-site observations and, if required, testing of rated features for a home as featured, optioned, located, oriented and/or built.
+Standard new home is based on the RESNET® Reference Home definition with a HERS® index of 100 (based on the 2006 International Energy Conservation Code).
++Typical resale home is based on the U.S. Department of Energy definition with a HERS® index of 130.

[^]RESNET® has developed the HERS® index to indicate the comparative efficiencies of homes. It is no guarantee that energy efficiencies will be achieved.