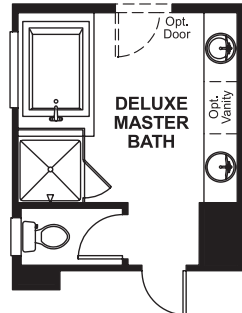
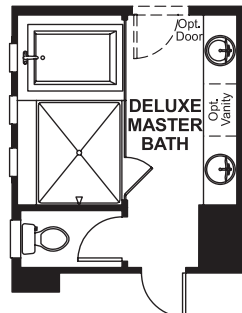


## Floor Plan

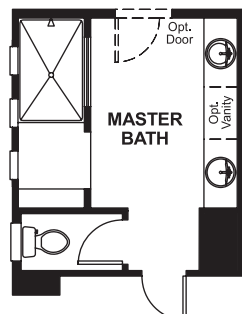
### Second Floor



**OPT. DELUXE  
MASTER BATH 1**



**OPT. DELUXE  
MASTER BATH 2**



**OPT. WALK-IN  
SHOWER**



### Elevation A

**Available elevations:**

### Elevation A



### Elevation B



### Elevation C

**Approx. square feet:** 2,850  
**Stories:** 2  
**Bedrooms:** 3 - 5  
**Garage:** 3-car  
**Plan Number:** L599

From the covered front porch to the formal dining room, spacious great room and gourmet kitchen with walk-in pantry, center island and nook, the two-story Dallas plan is designed to impress. The main floor also boasts a convenient powder room and a private study. Upstairs, enjoy a versatile loft and three bedrooms, including a generous master suite with a deluxe bath and expansive walk-in closet. Personalize this plan with an optional game room, guest suite, covered patio and more!

## COMMUNITY LOCATION

5527 Powell Prairie Avenue  
Las Vegas, NV 89085  
702-638-4440

## HOME GALLERY

7770 South Dean Martin Drive, Suite 308  
Las Vegas, NV 89139  
702-617-8400



Floorplans and renderings are conceptual drawings and may vary from actual plans and homes as built. Options and features may not be available on all homes and are subject to change without notice. Actual homes may vary from photos and/or drawings which show upgraded landscaping and may not represent the lowest-priced homes in the community. Features may include optional upgrades and may not be available on all homes. Square footage numbers are approximate and are subject to change without notice. Prices, specifications and availability subject to change without notice. ©2017 Richmond American Homes. In Nevada, homes are offered by Richmond American Homes of Nevada, Inc. (Nevada Contractor License #0026417). 06/05/2017



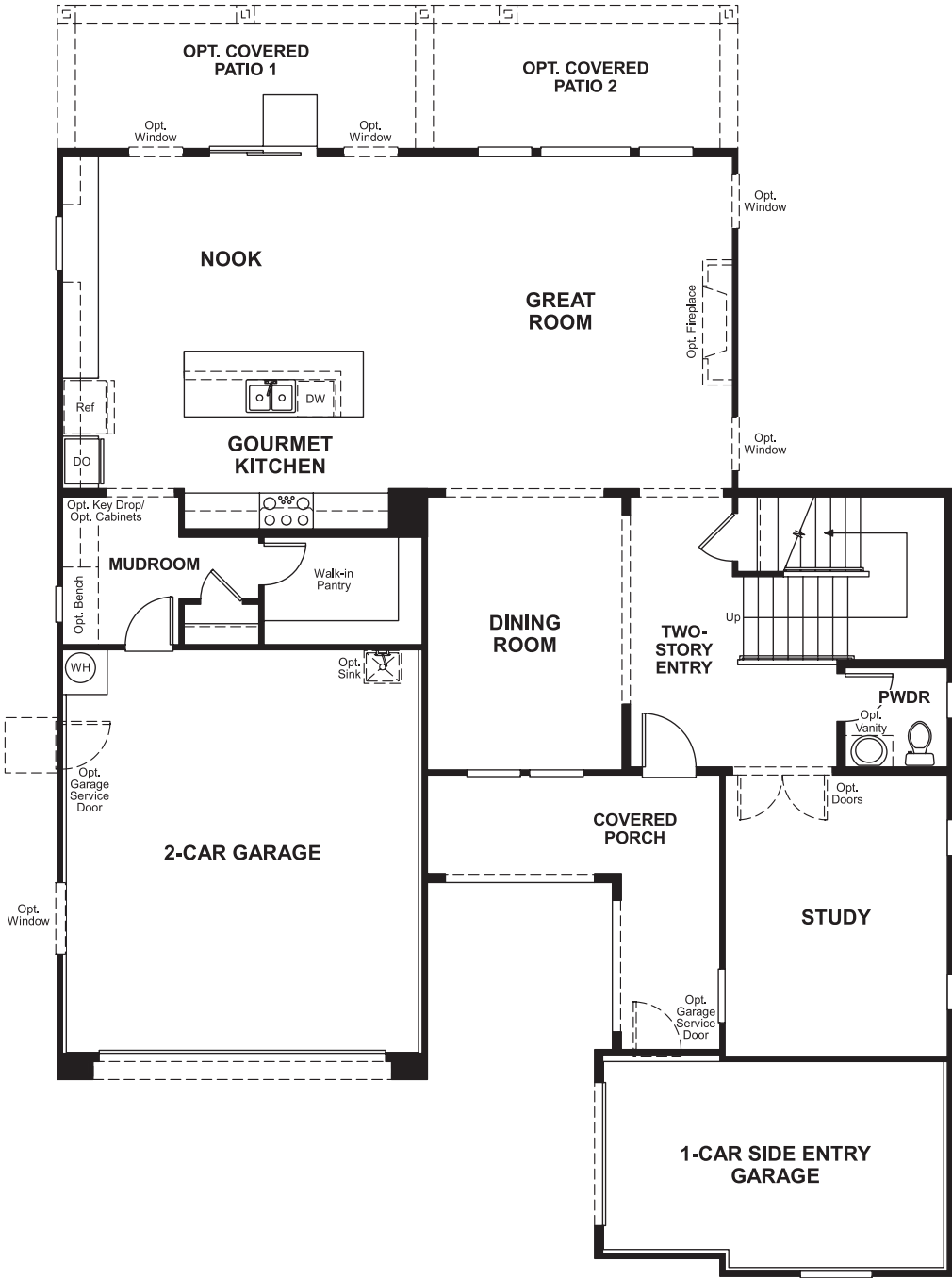
Floorplans and renderings are conceptual drawings and may vary from actual plans and homes as built. Options and features may not be available on all homes and are subject to change without notice. Actual homes may vary from photos and/or drawings which show upgraded landscaping and may not represent the lowest-priced homes in the community. Features may include optional upgrades and may not be available on all homes. Square footage numbers are approximate and are subject to change without notice. Prices, specifications and availability subject to change without notice. ©2017 Richmond American Homes. In Nevada, homes are offered by Richmond American Homes of Nevada, Inc. (Nevada Contractor License #0026417). 06/05/2017

Granite Falls  
**DALLAS**

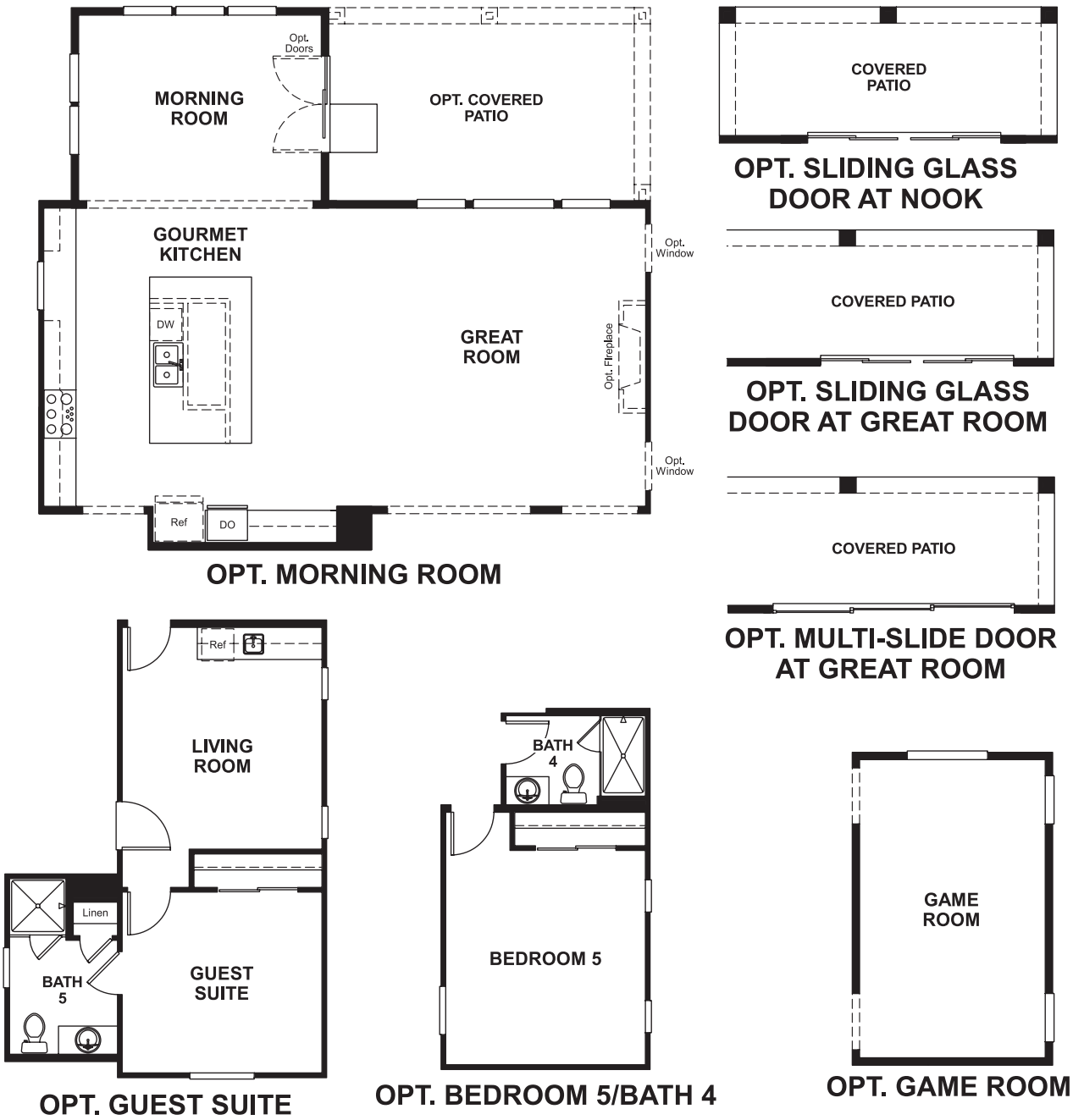
**Approx. square feet:** 2,850  
**Stories:** 2  
**Bedrooms:** 3 - 5

**Garage:** 3-car  
**Plan Number:** L599

**Floor Plan**  
Main Floor



**Floor Plan**  
Main Floor Options



**THIS PLAN'S PROJECTED  
HERS® INDEX = 66 \***  
Projected Rating Based on Plans – Field Confirmation Required

**How does this floor plan rate?**  
Take a look: **100** = Standard new home\* **130** = Typical resale home\*\*  
The lower the number, the better! Refer to the RESNET® HERS index brochure or go to **www.RESNET.us** for details.

**What's a HERS® Index?** HERS stands for Home Energy Rating System, a system created by RESNET® to measure home energy efficiency.^  
A Projected HERS index or rating is a computer simulation performed prior to construction by a third-party HERS rater using RESNET-accredited rating software, rated feature and specification data derived from home plans, features and specifications, and other data selected or assumed by the rater. The projected HERS index is approximate and is subject to change without notice. Actual results will vary.

\*This information is presented for education purposes only. The HERS index for a confirmed rating will be determined by a third-party HERS rater based on data gathered from on-site observations and, if required, testing of rated features for a home as featured, optioned, located, oriented and/or built.  
+Standard new home is based on the RESNET® Reference Home definition with a HERS® index of 100 (based on the 2006 International Energy Conservation Code).  
++Typical resale home is based on the U.S. Department of Energy definition with a HERS® index of 130.

^RESNET® has developed the HERS® index to indicate the comparative efficiencies of homes. It is no guarantee that energy efficiencies will be achieved.