

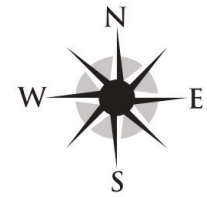
Campus Fairways
DELANEY

Approx. square feet: 2,350
Stories: 1
Bedrooms: 2 - 3

Garage: 2- to 4-car
Plan Number: W22D

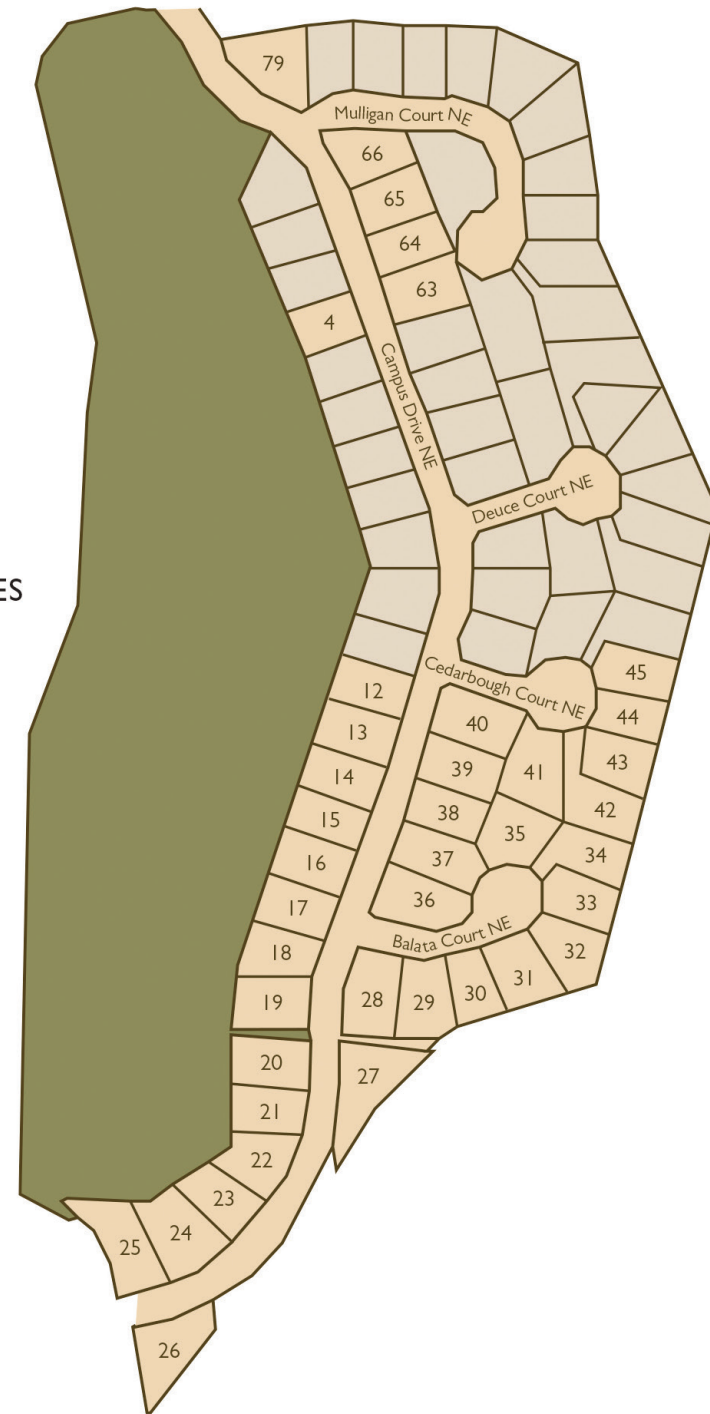
Campus Fairways
DELANEY

Sitemap



Map not drawn to scale.

 RICHMOND AMERICAN HOMESITES



Elevation B

Available elevations:



Elevation B



Elevation C



Elevation D

Approx. square feet: 2,350
Stories: 1
Bedrooms: 2 - 3
Garage: 2- to 4-car
Plan Number: W22D

At the heart of the ranch-style Delaney plan, you'll find an open family room with a cozy fireplace and a gourmet kitchen with a double oven, center island and breakfast nook with optional bay window. Other notable features include a relaxing covered patio and a secluded master suite with a private bath and expansive walk-in closet. Choose a study or optional third bedroom and further personalize this plan with an optional powder room and 3-car garage or additional side-entry garage.

COMMUNITY LOCATION
4440 Campus Drive North East
Lacey, WA 98516
360-529-4670

HOME GALLERY
20829 72nd Avenue South, Suite 115
Kent, WA 98032
253-446-7277



COMMUNITY LOCATION
4440 Campus Drive North East
Lacey, WA 98516
360-529-4670

HOME GALLERY
20829 72nd Avenue South, Suite 115
Kent, WA 98032
253-446-7277

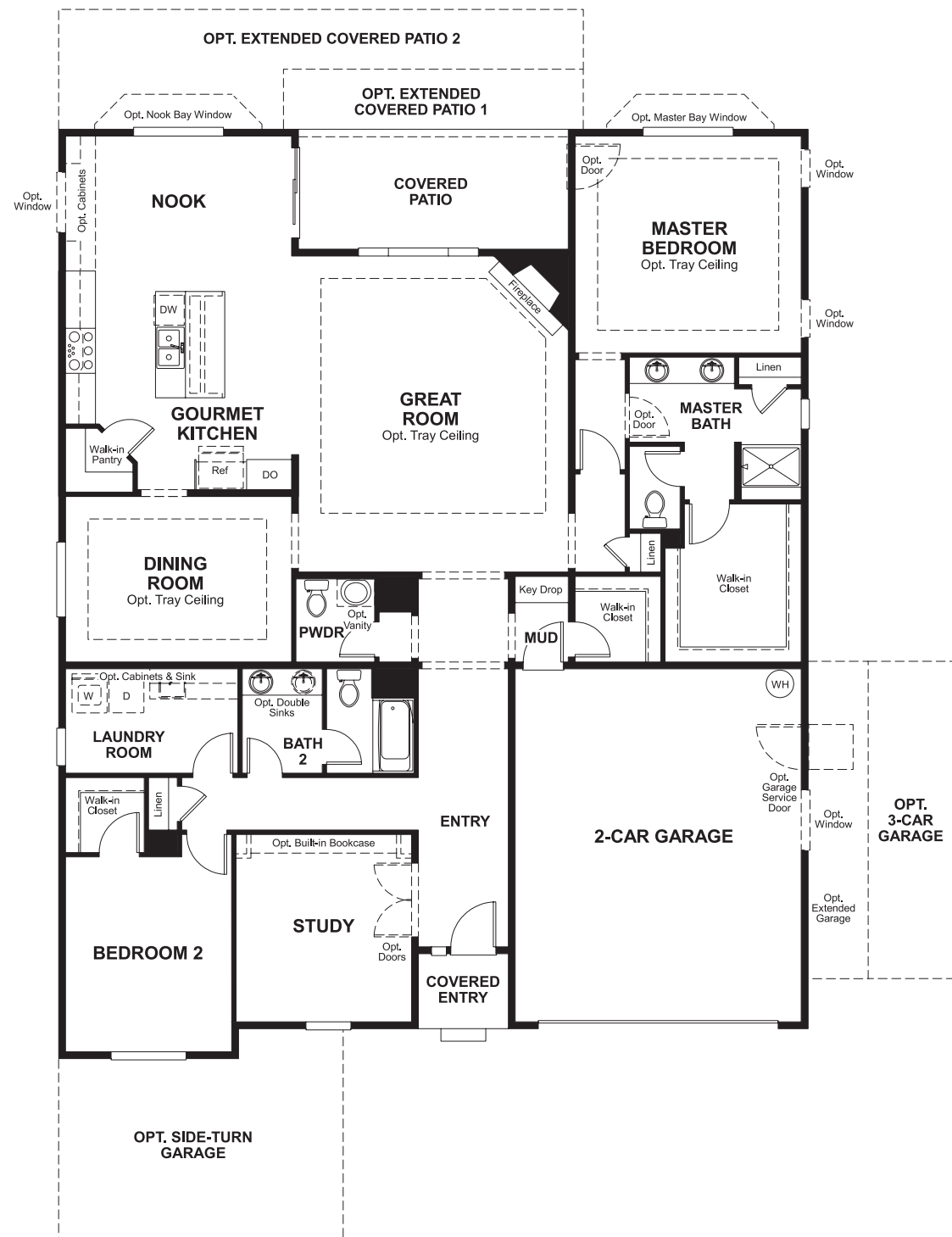


Campus Fairways
DELANEY

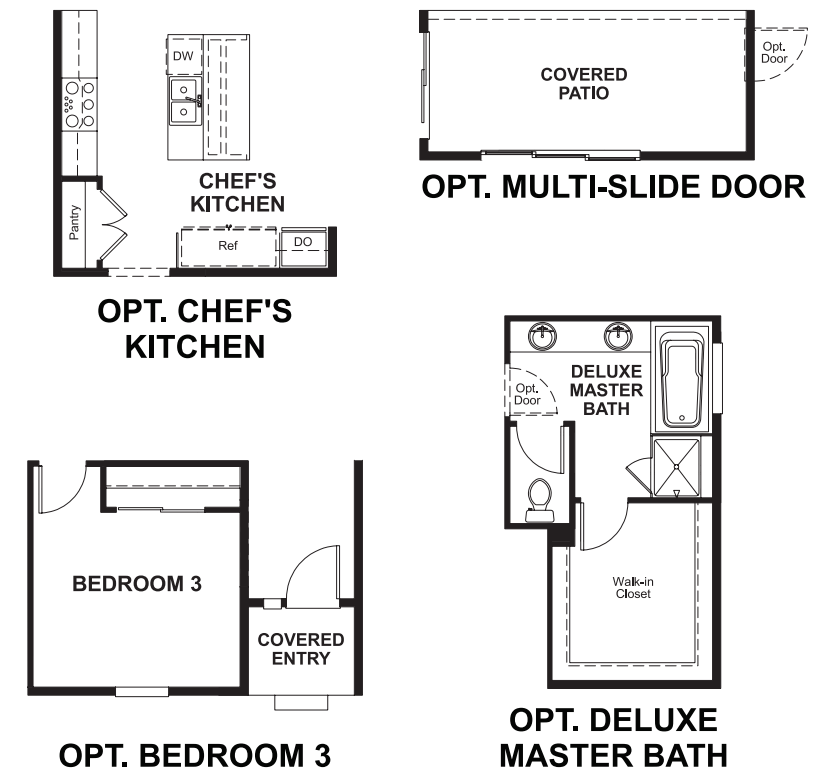
Approx. square feet: 2,350
Stories: 1
Bedrooms: 2 - 3

Garage: 2- to 4-car
Plan Number: W22D

Floor Plan
Main Floor



Floor Plan
Main Floor Options



THIS PLAN'S PROJECTED HERS® INDEX = 54*
Projected Rating Based on Plans – Field Confirmation Required

How does this floor plan rate?
Take a look: 100 = Standard new home* 130 = Typical resale home**
The lower the number, the better! Refer to the RESNET® HERS index brochure or go to www.RESNET.us for details.

What's a HERS® Index? HERS stands for Home Energy Rating System, a system created by RESNET® to measure home energy efficiency. A Projected HERS index or rating is a computer simulation performed prior to construction by a third-party HERS rater using RESNET-accredited rating software, rated feature and specification data derived from home plans, features and specifications, and other data selected or assumed by the rater. The projected HERS index is approximate and is subject to change without notice. Actual results will vary.

*This information is presented for education purposes only. The HERS index for a confirmed rating will be determined by a third-party HERS rater based on data gathered from on-site observations and, if required, testing of rated features for a home as featured, optioned, located, oriented and/or built.
+Standard new home is based on the RESNET® Reference Home definition with a HERS® index of 100 (based on the 2006 International Energy Conservation Code).
++Typical resale home is based on the U.S. Department of Energy definition with a HERS® index of 130.

^RESNET® has developed the HERS® index to indicate the comparative efficiencies of homes. It is no guarantee that energy efficiencies will be achieved.