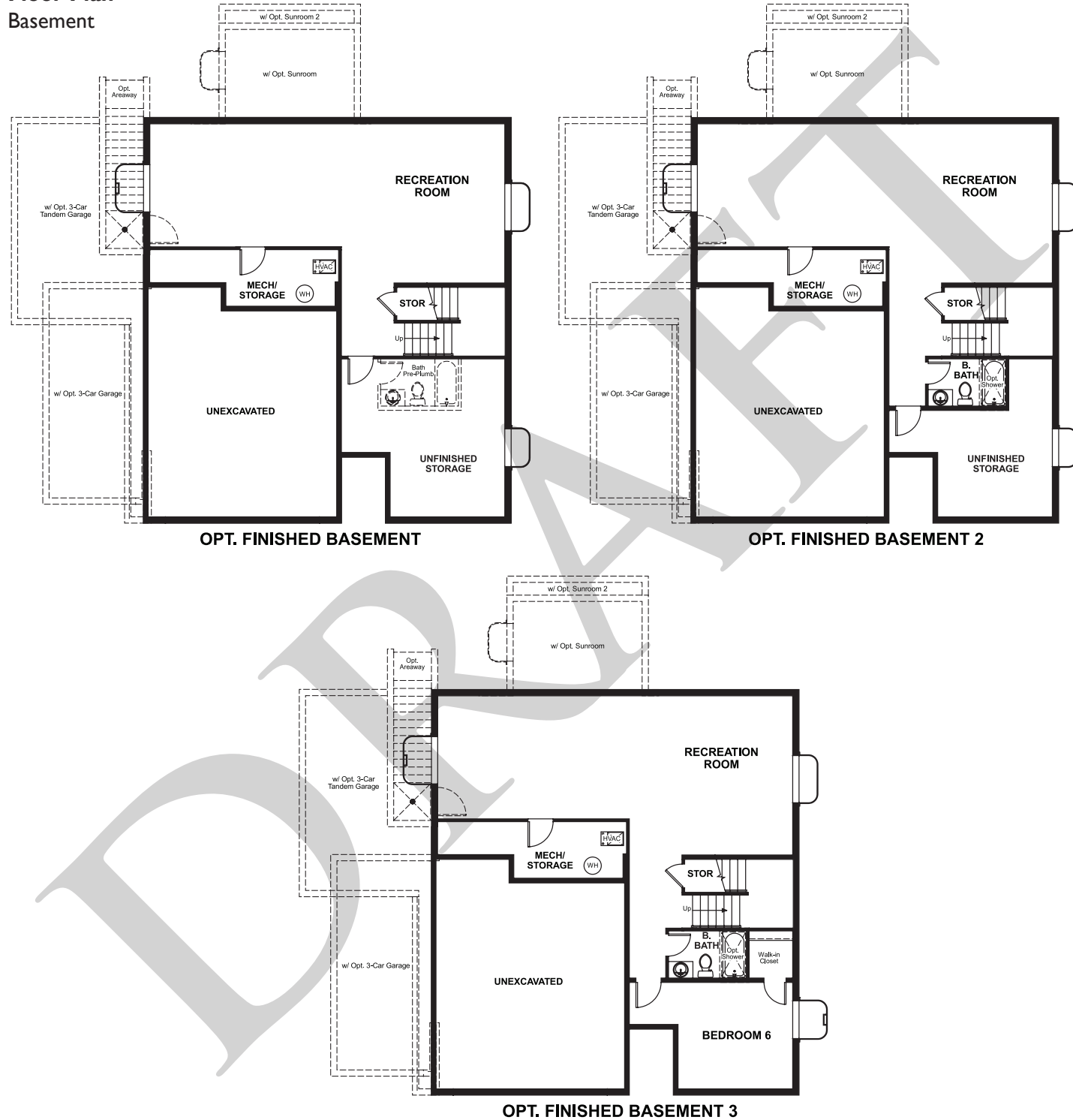


Arden Park
CORONADO

Approx. square feet: 2,600
Stories: 2
Bedrooms: 3 - 6

Garage: 2- to 3-car
Plan Number: M723

Floor Plan
Basement



Arden Park
CORONADO

Approx. square feet: 2,600
Stories: 2
Bedrooms: 3 - 6
Garage: 2- to 3-car
Plan Number: M723



Elevation A

The main floor of the Coronado floor plan provides spaces for working and entertaining. Just off the entry are a study and a powder room. At the back of the home, enjoy an open great room, dining room and kitchen, complete with center island and walk-in pantry off the mudroom. Three bedrooms, a generous loft, a laundry and two baths are located upstairs. Add up to two additional bedrooms, a third garage bay and a sunroom!

Available elevations:



Elevation A



Elevation B



Elevation C



Elevation D



Elevation E



Elevation F



Elevation J



Elevation K

COMMUNITY ADDRESS
1458 North Rolling Road
Catonsville, MD 21228
410-312-2829

HOME GALLERY
6210 Old Dobbin Lane, Suite 190
Columbia, MD 21045
888-772-4545



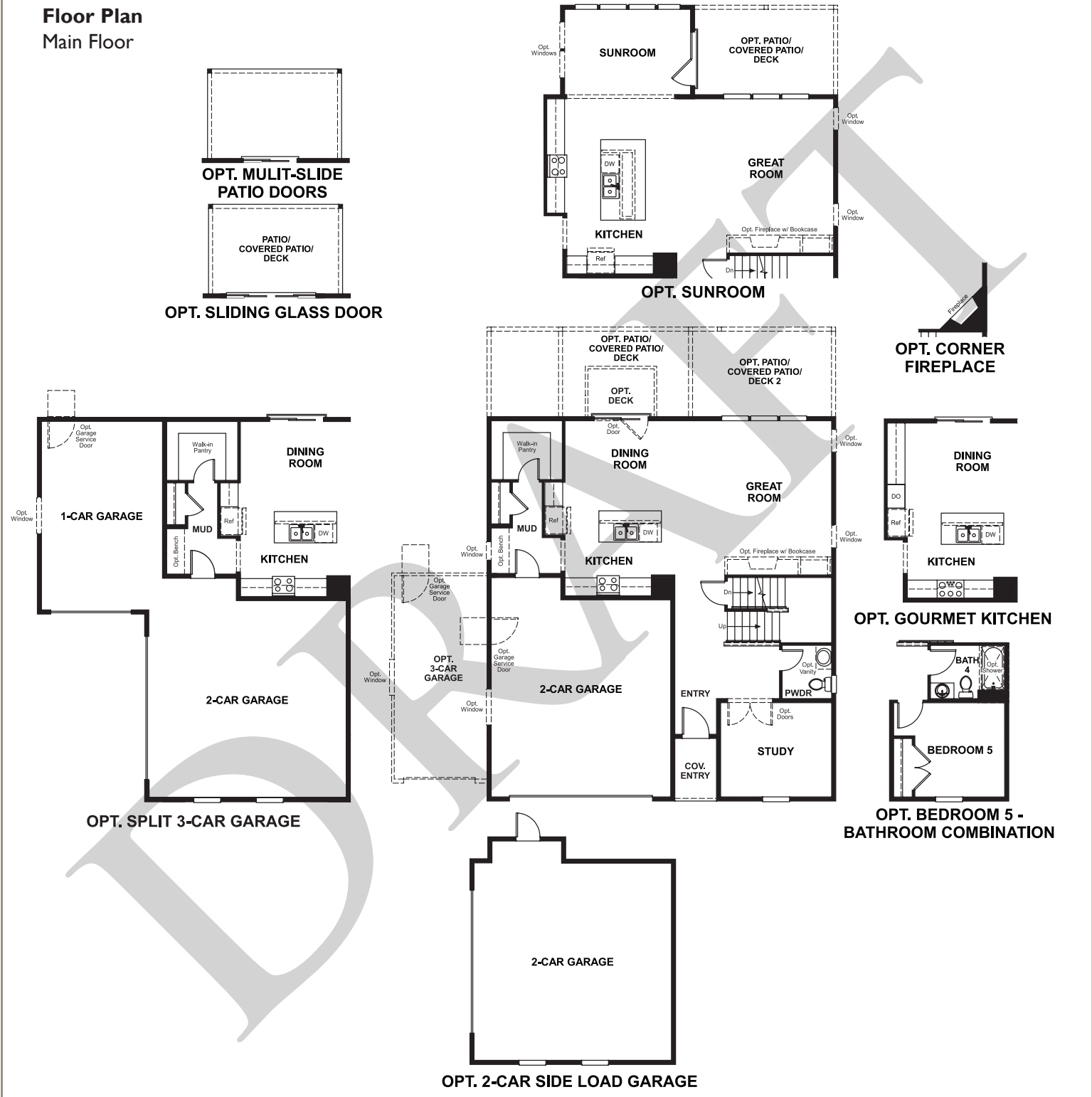
COMMUNITY ADDRESS
1458 North Rolling Road
Catonsville, MD 21228
410-312-2829

HOME GALLERY
6210 Old Dobbin Lane, Suite 190
Columbia, MD 21045
888-772-4545

Arden Park
CORONADO

Approx. square feet: 2,600
Stories: 2
Bedrooms: 3 - 6
Garage: 2- to 3-car
Plan Number: M723

Floor Plan
Main Floor



Floor Plan
Second Floor

