

Auburn at Stonegate  
**CHELSEA**



**Elevation A**

Available elevations:



**Elevation A**



**Elevation B**



**Elevation D**

**Approx. square feet:** 3,250

**Stories:** 2

**Bedrooms:** 4

**Garage:** 2-car

The main floor of the Chelsea plan includes an open-concept kitchen and butler's pantry next to the dining and great room area. Prefer to dine al fresco? Skip the restaurant and entertain in your very own courtyard. A convenient bedroom and full bath can also be found on the main floor. Two bedrooms are located upstairs—one with a private balcony—plus a spacious master suite with a walk-in shower and a separate tub. An extended master bedroom and a master retreat are just two options available with this exceptional new home.

 **Villages of Irvine**<sup>®</sup>  
Masterfully Planned by the Irvine Company

"Masterfully Planned by the Irvine Company" means that the Irvine Company created the master land plan for all Irvine Company communities. The "master land plan" includes the overall entitlement and design of each community but does not include the design, construction and sale of homes. The design, construction and sale of homes is the sole responsibility of the community builders. The Irvine company is not designing, constructing or offering homes for sale in any community.

**COMMUNITY LOCATION**

53 Fenway  
Irvine, CA 92595  
800-852-9714

**HOME GALLERY**

5171 California Avenue  
Irvine, CA 92617  
800-852-9714



**COMMUNITY LOCATION**

53 Fenway  
Irvine, CA 92595  
800-852-9714

**HOME GALLERY**

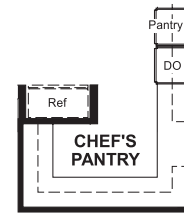
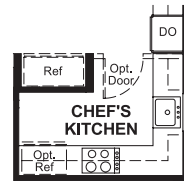
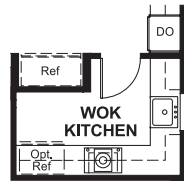
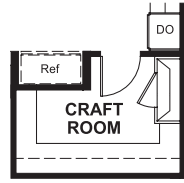
5171 California Avenue  
Irvine, CA 92617  
800-852-9714



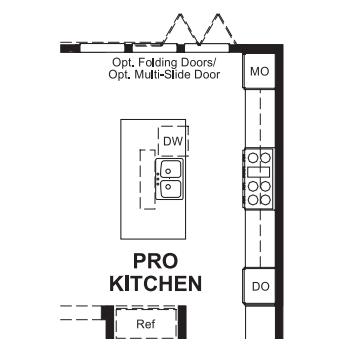
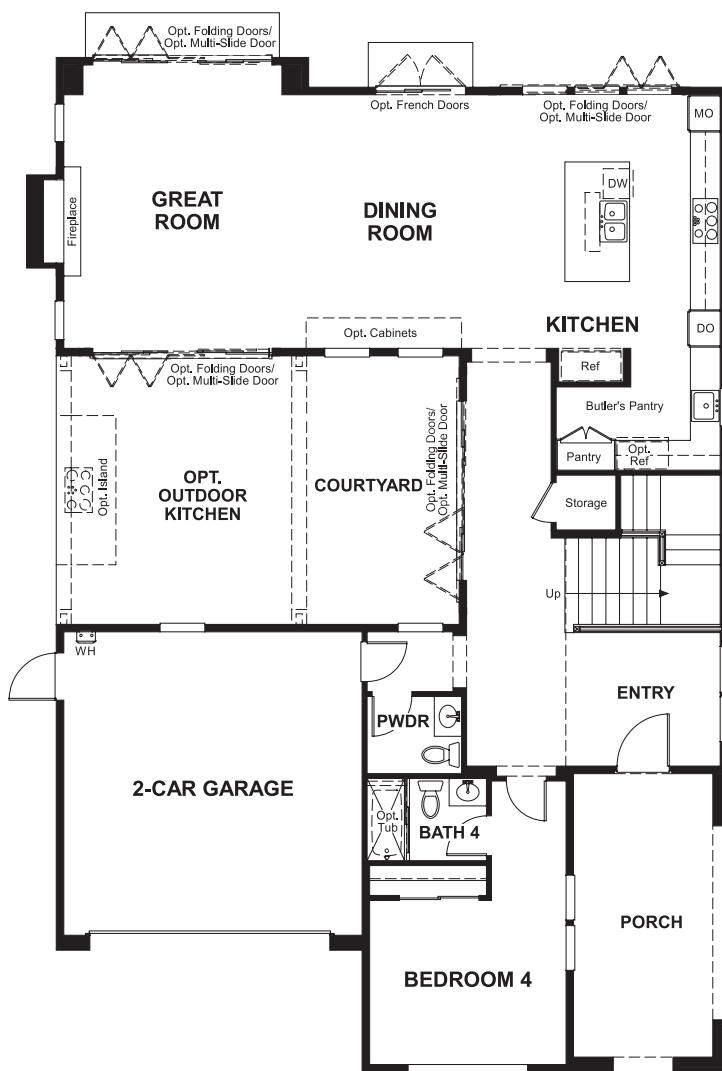
Auburn at Stonegate  
**CHELSEA**

**Approx. square feet:** 3,250 **Bedrooms:** 4  
**Stories:** 2 **Garage:** 2-car

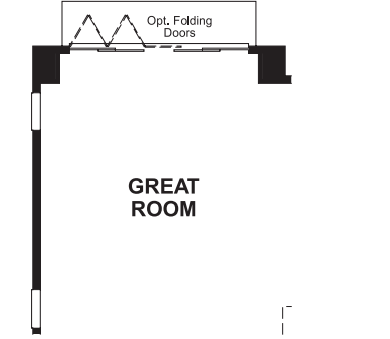
**Floor plan**  
Main Floor



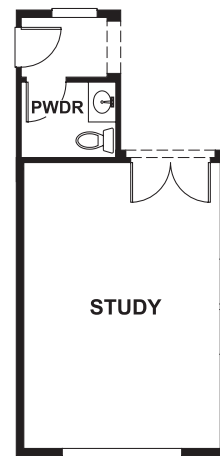
**OPT. CRAFT ROOM OPT. WOK KITCHEN OPT. CHEF'S KITCHEN OPT. CHEF'S PANTRY**



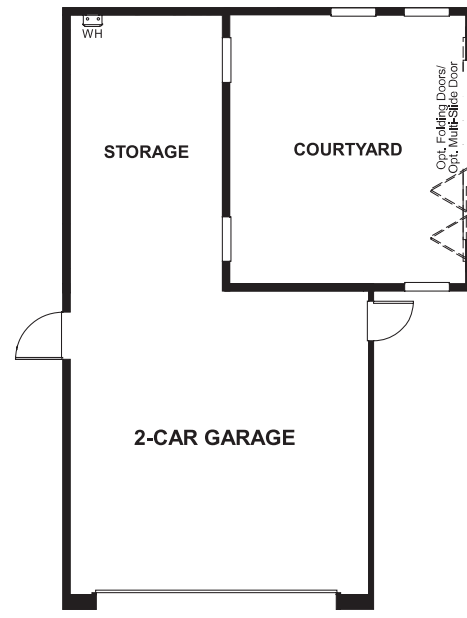
**OPT. PROFESSIONAL KITCHEN**



**OPTION TO REMOVE FIREPLACE**

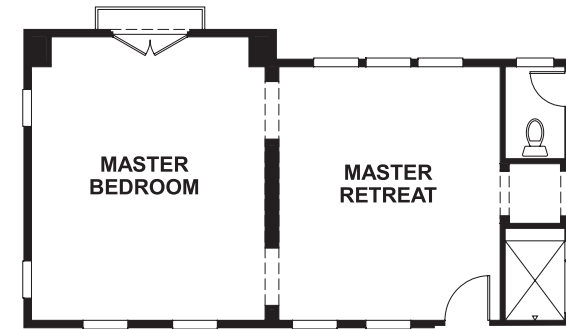


**OPT. STUDY**

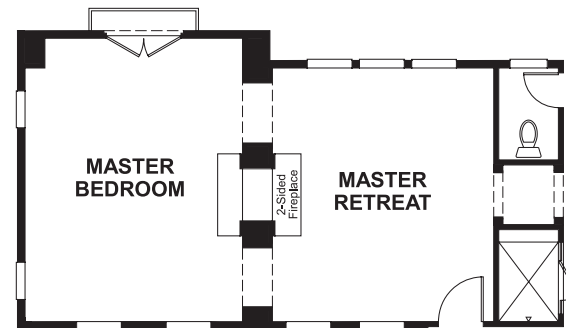


**OPT. GARAGE STORAGE**

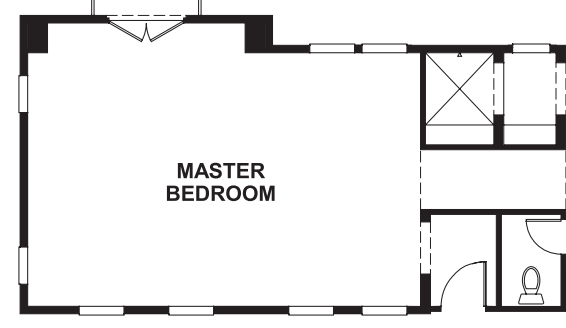
**Floor plan**  
Second Floor



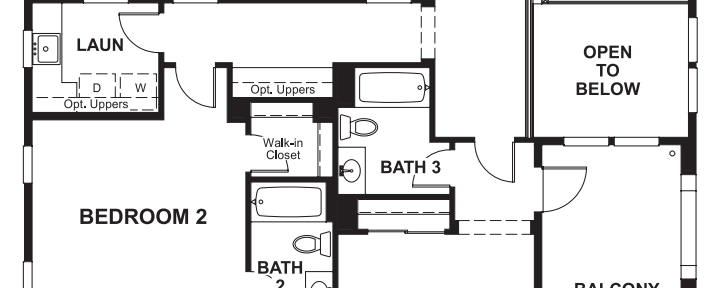
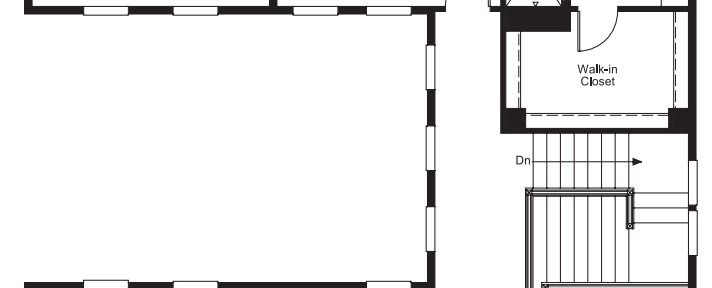
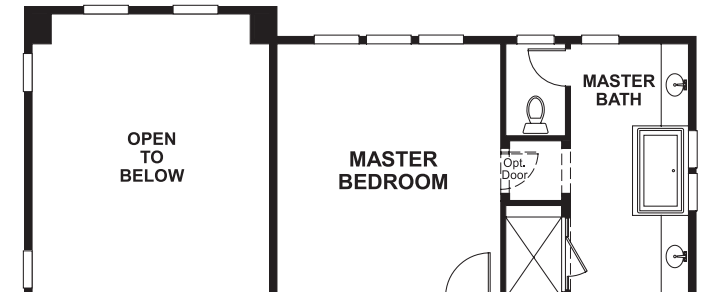
**OPT. MASTER RETREAT 1**



**OPT. MASTER RETREAT 2**



**OPT. SUPER MASTER BEDROOM**



**OPT. ARTIST LOFT**

**THIS PLAN'S PROJECTED HERS® INDEX = 74\***  
Projected Rating Based on Plans – Field Confirmation Required

**How does this floor plan rate?**  
Take a look: **100** = Standard new home\* **130** = Typical resale home\*\*  
The lower the number, the better! Refer to the RESNET® HERS index brochure or go to [www.RESNET.us](http://www.RESNET.us) for details.

**What's a HERS® Index?** HERS stands for Home Energy Rating System, a system created by RESNET® to measure home energy efficiency.<sup>^</sup>  
A Projected HERS index or rating is a computer simulation performed prior to construction by a third-party HERS rater using RESNET-accredited rating software, rated feature and specification data derived from home plans, features and specifications, and other data selected or assumed by the rater. The projected HERS index is approximate and is subject to change without notice. Actual results will vary.

\*This information is presented for education purposes only. The HERS index for a confirmed rating will be determined by a third-party HERS rater based on data gathered from on-site observations and, if required, testing of rated features for a home as featured, optioned, located, oriented and/or built.  
+Standard new home is based on the RESNET® Reference Home definition with a HERS® index of 100 (based on the 2006 International Energy Conservation Code).  
++Typical resale home is based on the U.S. Department of Energy definition with a HERS® index of 130.

<sup>^</sup>RESNET® has developed the HERS® index to indicate the comparative efficiencies of homes. It is no guarantee that energy efficiencies will be achieved.