

Auburn at Stonegate
CHERIE



Elevation A

Available elevations:



Elevation A



Elevation B



Elevation D

Approx. square feet: 3,700
Stories: 2
Bedrooms: 5
Garage: 2-car

An expansive main-floor master suite is just one of many luxuries the Cherie has to offer. You'll also enjoy a generous kitchen with a separate prep kitchen, plus an open-concept great room and dining room with access to an outdoor entertaining area. The upstairs includes a bonus room and three additional bedrooms—two of which can be converted to a second master suite. Other options include a private study in lieu of the main-floor bedroom and a wine room in lieu of the prep kitchen.

 **Villages of Irvine**[®]
Masterfully Planned by the Irvine Company

"Masterfully Planned by the Irvine Company" means that the Irvine Company created the master land plan for all Irvine Company communities. The "master land plan" includes the overall entitlement and design of each community but does not include the design, construction and sale of homes. The design, construction and sale of homes is the sole responsibility of the community builders. The Irvine company is not designing, constructing or offering homes for sale in any community.

COMMUNITY LOCATION
53 Fenway
Irvine, CA 92595
800-852-9714

HOME GALLERY
5171 California Avenue
Irvine, CA 92617
800-852-9714



COMMUNITY LOCATION
53 Fenway
Irvine, CA 92595
800-852-9714

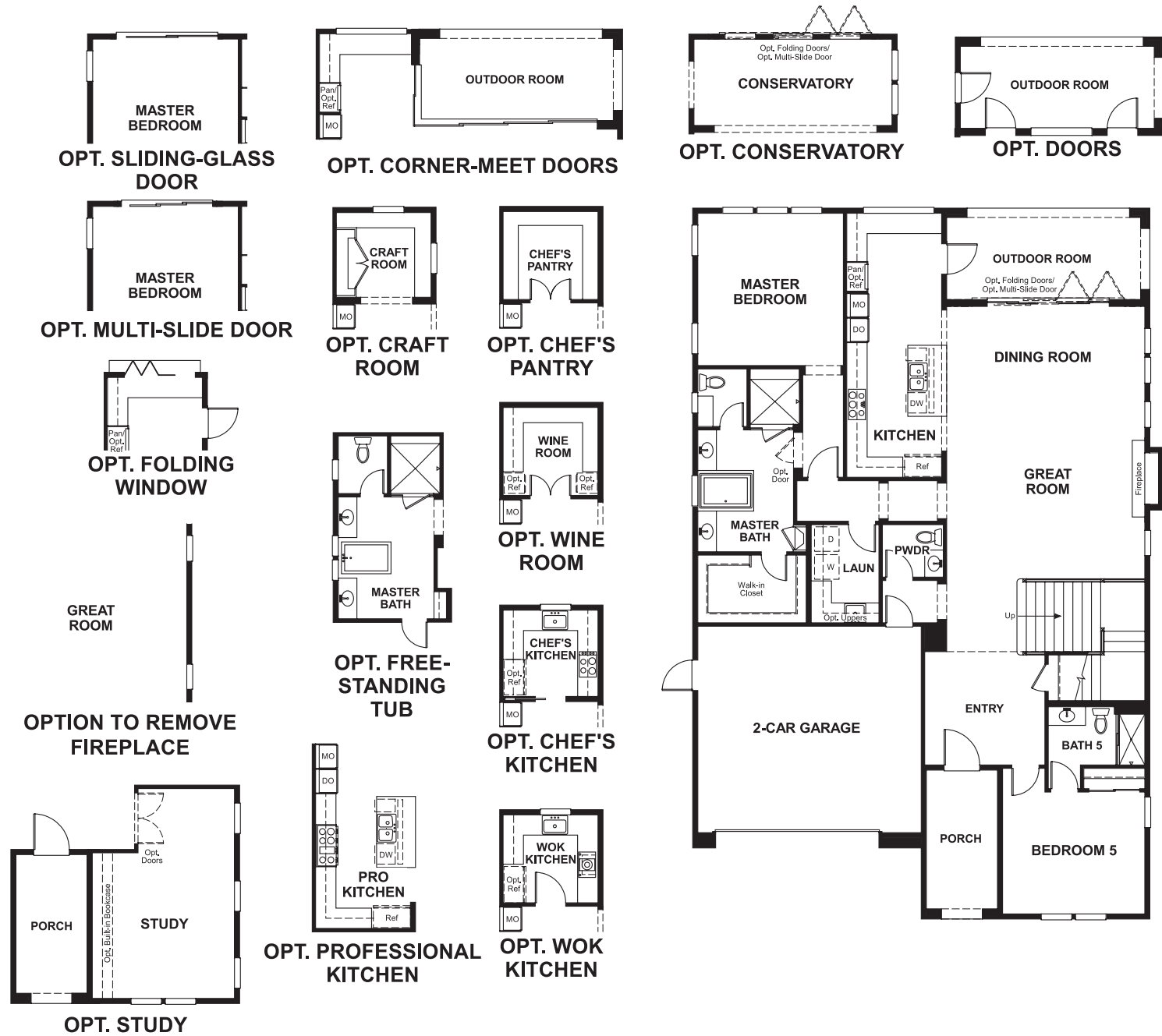
HOME GALLERY
5171 California Avenue
Irvine, CA 92617
800-852-9714



Auburn at Stonegate
CHERIE

Approx. square feet: 3,700 **Bedrooms: 5**
Stories: 2 **Garage: 2-car**

Floor plan
Main Floor



Floor plan
Second Floor



THIS PLAN'S PROJECTED HERS® INDEX = 67*
Projected Rating Based on Plans – Field Confirmation Required

How does this floor plan rate?
Take a look: **100** = Standard new home* **130** = Typical resale home**
The lower the number, the better! Refer to the RESNET® HERS index brochure or go to www.RESNET.us for details.

What's a HERS® Index? HERS stands for Home Energy Rating System, a system created by RESNET® to measure home energy efficiency.[^]
A Projected HERS index or rating is a computer simulation performed prior to construction by a third-party HERS rater using RESNET-accredited rating software, rated feature and specification data derived from home plans, features and specifications, and other data selected or assumed by the rater. The projected HERS index is approximate and is subject to change without notice. Actual results will vary.

*This information is presented for education purposes only. The HERS index for a confirmed rating will be determined by a third-party HERS rater based on data gathered from on-site observations and, if required, testing of rated features for a home as featured, optioned, located, oriented and/or built.
+Standard new home is based on the RESNET® Reference Home definition with a HERS® index of 100 (based on the 2006 International Energy Conservation Code).
++Typical resale home is based on the U.S. Department of Energy definition with a HERS® index of 130.

[^]RESNET® has developed the HERS® index to indicate the comparative efficiencies of homes. It is no guarantee that energy efficiencies will be achieved.