

Willow Vista
SARAH



Elevation A

Approx. square feet: 2,150
Stories: 1
Bedrooms: 3 - 4
Garage: 2- to 3-car
Plan Number: T21S

The versatile Sarah plan offers an open great room and kitchen, three bedrooms, a convenient laundry and a study—all on one floor. Personalize your space with an additional powder bath, a dining room or additional bedroom in lieu of the study, and gourmet kitchen features multi-slide doors.

Available elevations:



Elevation A



Elevation B



Elevation C Shown with optional stone



COMMUNITY LOCATION
 4905 West Willow Wind Way
 Tucson, AZ 85741
 520-498-4155

HOME GALLERY
 3091 West Ina Road
 Tucson, AZ 85741
 520-548-4100



COMMUNITY LOCATION
 4905 West Willow Wind Way
 Tucson, AZ 85741
 520-498-4155

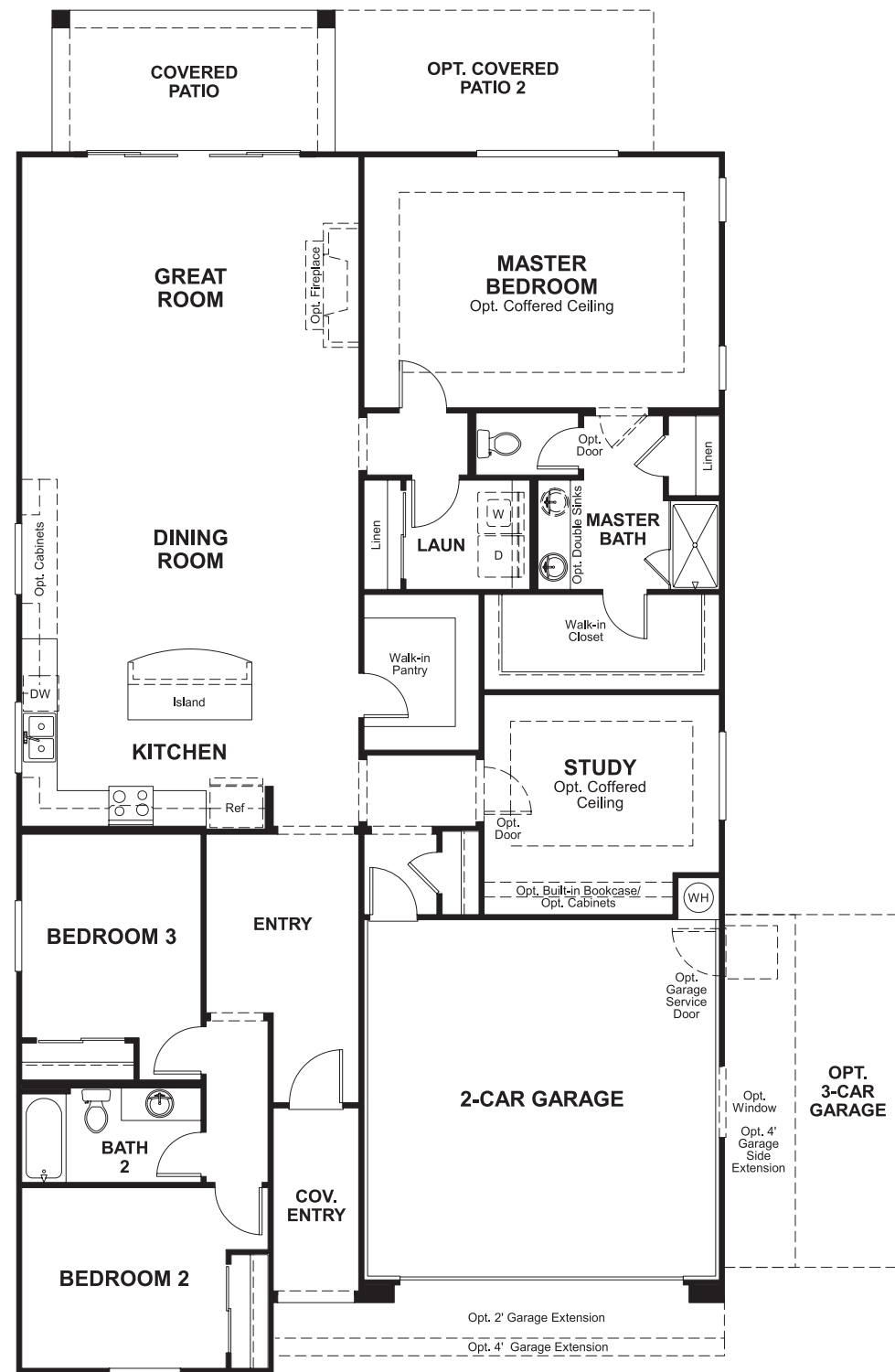
HOME GALLERY
 3091 West Ina Road
 Tucson, AZ 85741
 520-548-4100

Willow Vista
SARAH

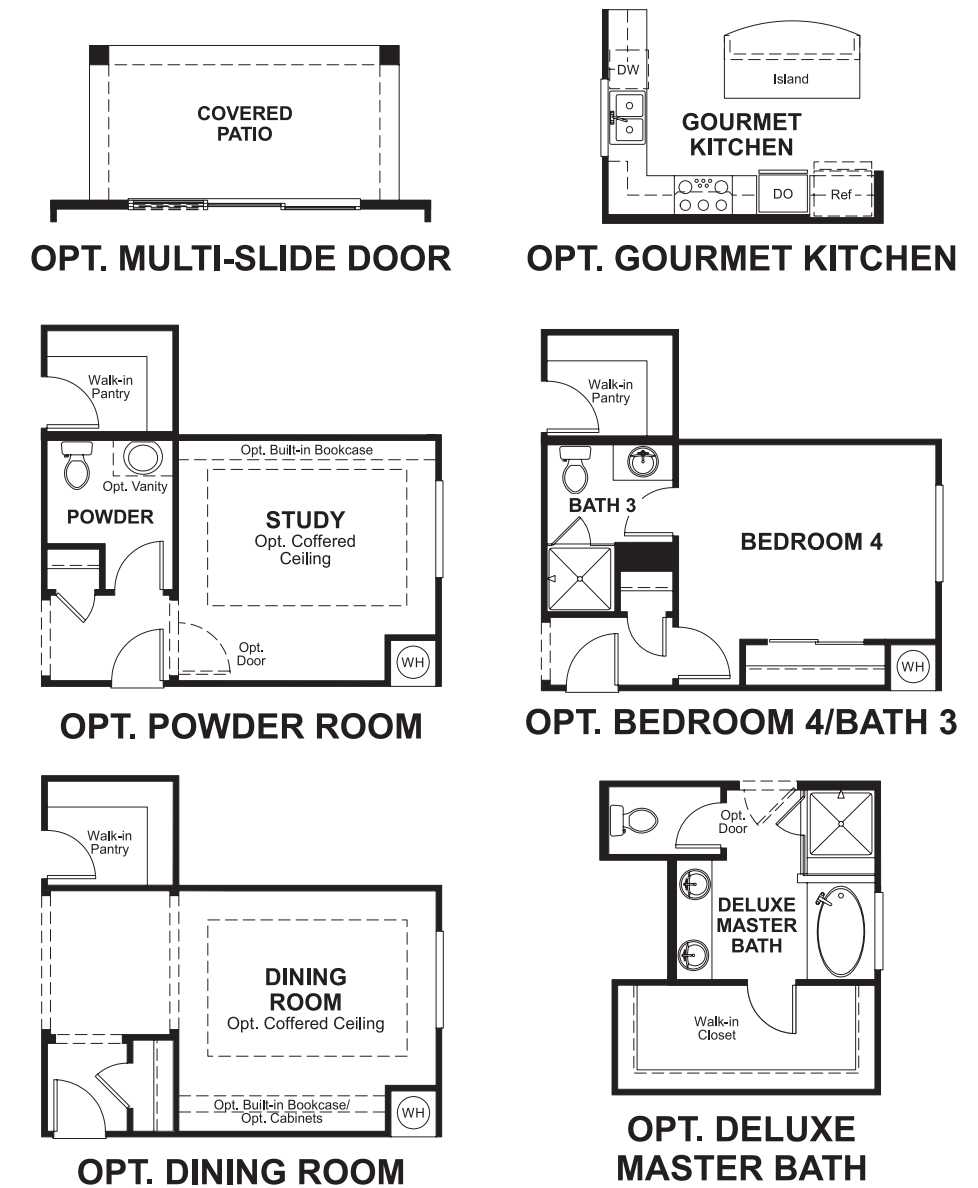
Approx. square feet: 2,150
Stories: 1
Bedrooms: 3 - 4

Garage: 2- to 3-car
Plan Number: T21S

Floor Plan
Main Floor



Floor Plan
Main Floor Options



**THIS PLAN'S PROJECTED
HERS® INDEX = 67***
Projected Rating Based on Plans – Field Confirmation Required

How does this floor plan rate?
Take a look: **100** = Standard new home* **130** = Typical resale home**
The lower the number, the better! Refer to the RESNET® HERS index brochure or go to www.RESNET.us for details.

What's a HERS® Index? HERS stands for Home Energy Rating System, a system created by RESNET® to measure home energy efficiency.[^]
A Projected HERS index or rating is a computer simulation performed prior to construction by a third-party HERS rater using RESNET-accredited rating software, rated feature and specification data derived from home plans, features and specifications, and other data selected or assumed by the rater. The projected HERS index is approximate and is subject to change without notice. Actual results will vary.

*This information is presented for education purposes only. The HERS index for a confirmed rating will be determined by a third-party HERS rater based on data gathered from on-site observations and, if required, testing of rated features for a home as featured, optioned, located, oriented and/or built.
+Standard new home is based on the RESNET® Reference Home definition with a HERS® index of 100 (based on the 2006 International Energy Conservation Code).
**Typical resale home is based on the U.S. Department of Energy definition with a HERS® index of 130.

[^]RESNET® has developed the HERS® index to indicate the comparative efficiencies of homes. It is no guarantee that energy efficiencies will be achieved.