

Arlington Point  
**HANFORD**



**Elevation A**

**Approx. square feet:** 2,950  
**Stories:** 1  
**Bedrooms:** 3  
**Garage:** 3-car  
**Plan Number:** L29H

The ranch-style Hanford offers attractive curb appeal with front- and side-entry garages and a wide porch. Inside, you'll find a formal dining room, a spacious great room, a nook, a tech center and an open kitchen with a roomy walk-in pantry and an immense central island. The master suite offers a large walk-in closet and a private bath.

**Available elevations:**



**Elevation A**



**Elevation B**



**Elevation C**

**COMMUNITY LOCATION**  
 Westwind Road and Oleta Avenue  
 Las Vegas, NV 89139  
 702-638-4400

**HOME GALLERY**  
 7770 South Dean Martin Drive, Suite 308  
 Las Vegas, NV 89139  
 702-617-8400



**COMMUNITY LOCATION**  
 Westwind Road and Oleta Avenue  
 Las Vegas, NV 89139  
 702-638-4400

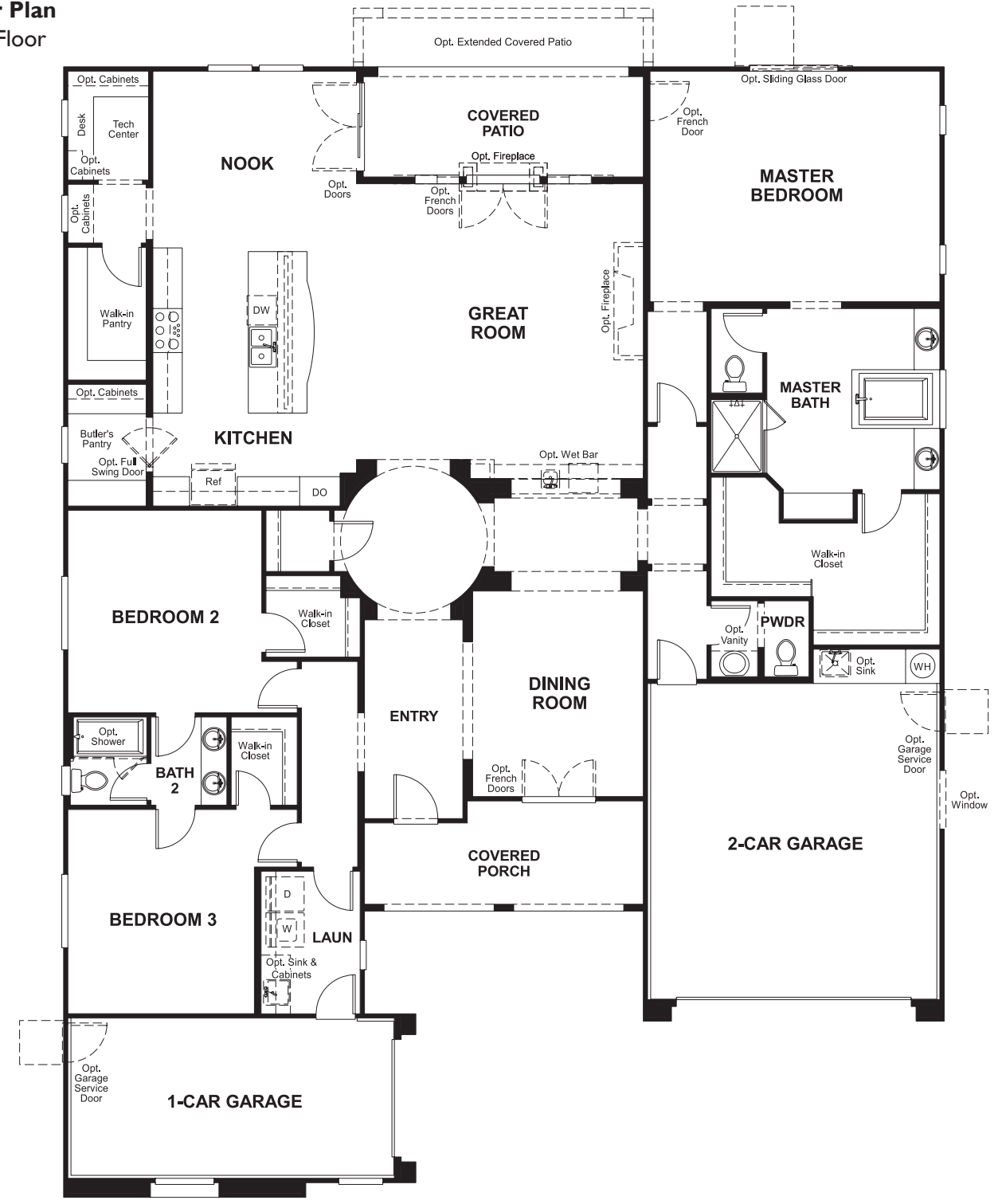
**HOME GALLERY**  
 7770 South Dean Martin Drive, Suite 308  
 Las Vegas, NV 89139  
 702-617-8400



Arlington Point  
**HANFORD**

**Approx. square feet: 2,950**  
**Stories: 1**  
**Bedrooms: 3**  
**Garage: 3-car**  
**Plan Number: L29H**

**Floor Plan**  
Main Floor



**Floor Plan**  
Main Floor Options

