

# THE PERIDOT

Approx. 1,650sq. ft. | 1 story | 3-4 bedrooms | 2-car garage | Plan #F9C8



ELEVATION C - SHOWN W/ OPT. STONE

## ABOUT THE PERIDOT

With a versatile ranch-style layout, the Peridot was designed with your comfort and lifestyle in mind. A kitchen with a convenient center island overlooks a breakfast nook and a great room with an optional fireplace and patio access. Add an extended covered patio for the perfect outdoor living space. Along the main hall, two inviting bedrooms share a bathroom, while the master suite is located on the other side of the home—boasting a large walk-in closet and a private bath with double sinks. You'll also love a centrally located laundry room, as well as a spacious storage area. Additional options include a study and a fourth bedroom.



ELEVATION A



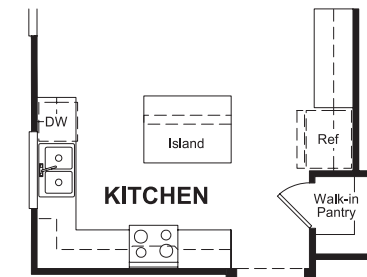
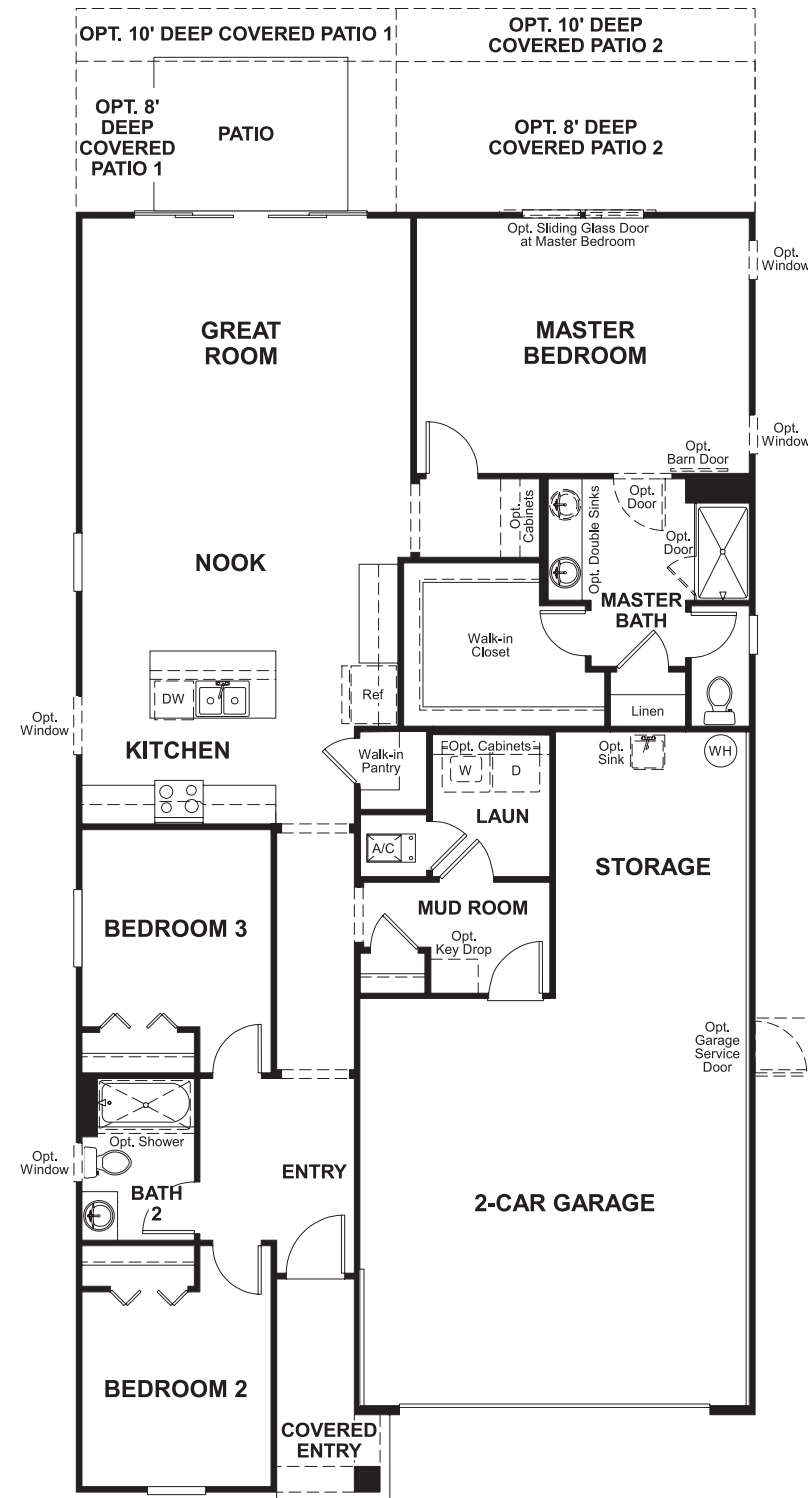
ELEVATION B



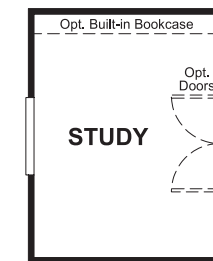
Floor plans and renderings are conceptual drawings and may vary from actual plans and homes as built. Options and features may not be available on all homes and are subject to change without notice. Actual homes may vary from photos and/or drawings which show upgraded landscaping and may not represent the lowest-priced homes in the community. Features may include optional upgrades and may not be available on all homes. Square footage numbers are approximate and are subject to change without notice. Prices, specifications and availability subject to change without notice. ©2019 Richmond American Homes, Richmond American Homes of Florida, LP, CBC1257429 2/25/2019

MAIN FLOOR

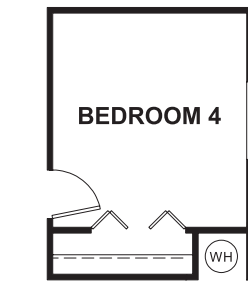
MAIN FLOOR OPTIONS



OPT. KITCHEN 2



OPT. STUDY



OPT. BEDROOM 4

Floor plans and renderings are conceptual drawings and may vary from actual plans and homes as built. Options and features may not be available on all homes and are subject to change without notice. Actual homes may vary from photos and/or drawings which show upgraded landscaping and may not represent the lowest-priced homes in the community. Features may include optional upgrades and may not be available on all homes. Square footage numbers are approximate and are subject to change without notice. Prices, specifications and availability subject to change without notice. ©2019 Richmond American Homes, Richmond American Homes of Florida, LP, CBC1257429 2/25/2019

Floor plans and renderings are conceptual drawings and may vary from actual plans and homes as built. Options and features may not be available on all homes and are subject to change without notice. Actual homes may vary from photos and/or drawings which show upgraded landscaping and may not represent the lowest-priced homes in the community. Features may include optional upgrades and may not be available on all homes. Square footage numbers are approximate and are subject to change without notice. Prices, specifications and availability subject to change without notice. ©2019 Richmond American Homes, Richmond American Homes of Florida, LP, CBC1257429 2/25/2019