

ALAN



Approx. square feet: 2,000
Stories: 1
Bedrooms: 3 - 4
Garage: 2- to 3-car
Plan Number: F202

The ranch-style Alan boasts a perfect combination of style and comfort. Ideal for casual get-togethers, the spacious great room faces the breakfast nook and inviting kitchen with optional gourmet features. A formal dining room offers more space to entertain, and a secluded study and master suite with walk-in closet offer relaxing retreats.

Elevation A

Available elevations:



Elevation A



Elevation B



Elevation C - Shown with optional stone



Elevation D



Elevation E



Elevation F

HOME GALLERY
 762 South Northlake Boulevard
 Altamonte Springs, FL 32701
 321-418-3095



HOME GALLERY
 762 South Northlake Boulevard
 Altamonte Springs, FL 32701
 321-418-3095

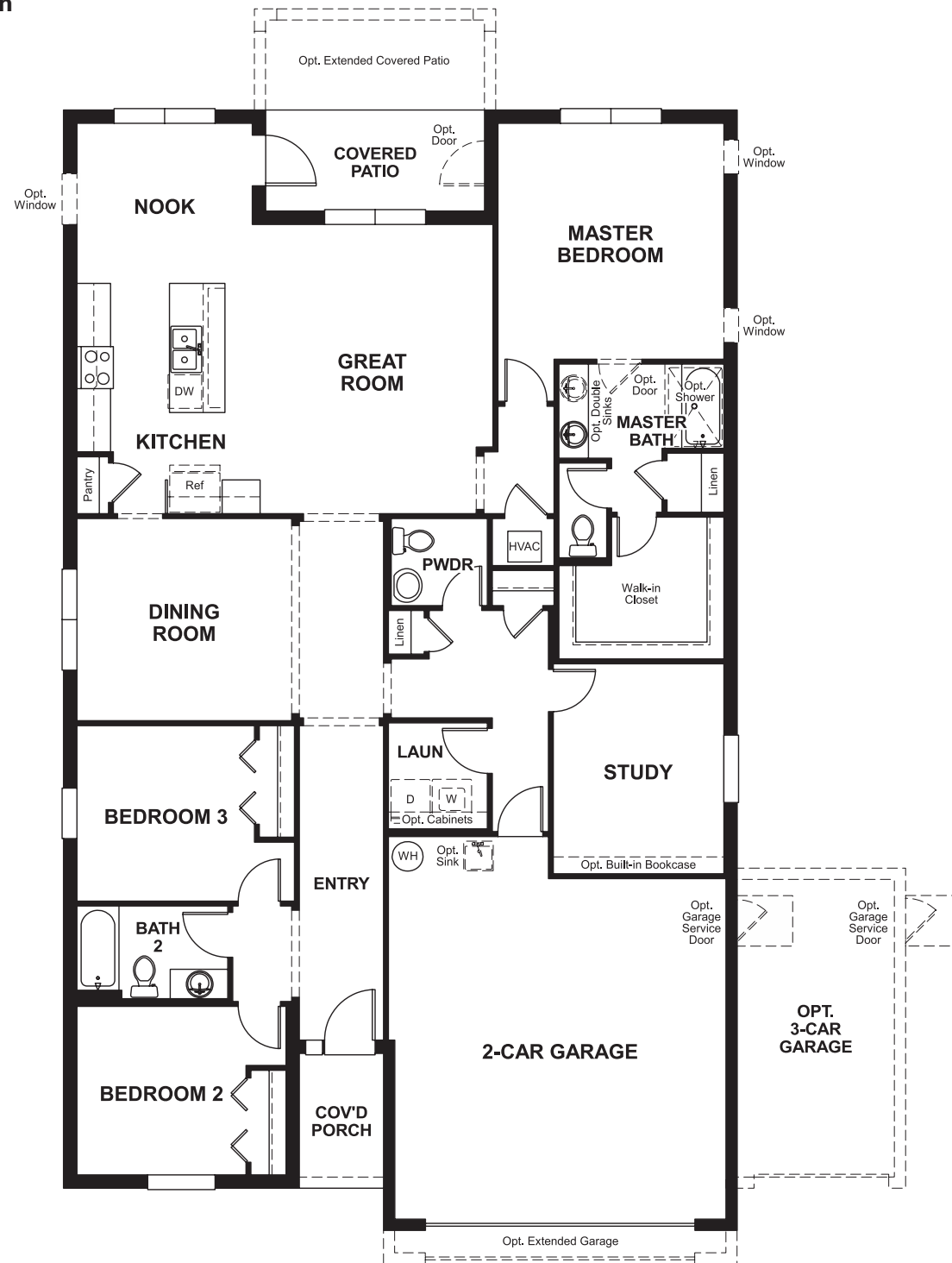


ALAN

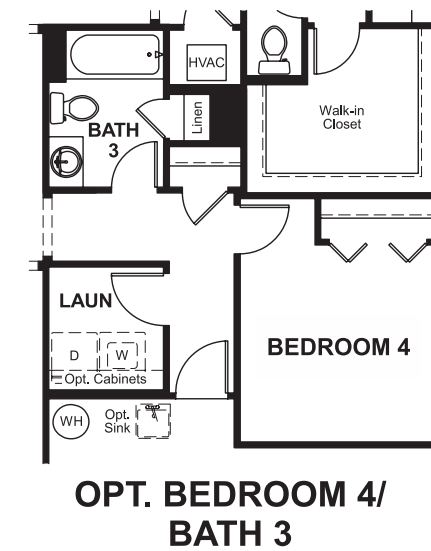
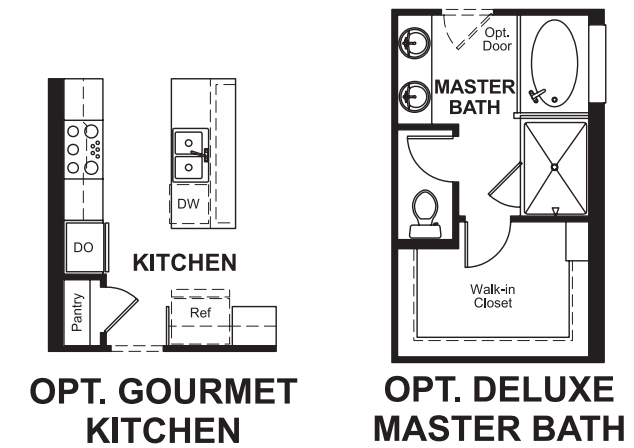
Approx. square feet: 2,000
Stories: 1
Bedrooms: 3 - 4

Garage: 2- to 3-car
Plan Number: F202

Floor Plan
First Floor



Floor Plan
First Floor Options



THIS PLAN'S PROJECTED HERS® INDEX = TBD*
Projected Rating Based on Plans – Field Confirmation Required

How does this floor plan rate?
Take a look: **100** = Standard new home* **130** = Typical resale home**
The lower the number, the better! Refer to the RESNET® HERS index brochure or go to www.RESNET.us for details.

What's a HERS® Index? HERS stands for Home Energy Rating System, a system created by RESNET® to measure home energy efficiency.[^]
A Projected HERS index or rating is a computer simulation performed prior to construction by a third-party HERS rater using RESNET-accredited rating software, rated feature and specification data derived from home plans, features and specifications, and other data selected or assumed by the rater. The projected HERS index is approximate and is subject to change without notice. Actual results will vary.

*This information is presented for education purposes only. The HERS index for a confirmed rating will be determined by a third-party HERS rater based on data gathered from on-site observations and, if required, testing of rated features for a home as featured, optioned, located, oriented and/or built.
+Standard new home is based on the RESNET® Reference Home definition with a HERS® index of 100 (based on the 2006 International Energy Conservation Code).
++Typical resale home is based on the U.S. Department of Energy definition with a HERS® index of 130.

[^]RESNET® has developed the HERS® index to indicate the comparative efficiencies of homes. It is no guarantee that energy efficiencies will be achieved.