

Villas at Montana Vista
ALLMAN



Elevation A

Approx. square feet: 1,600

Stories: 1

Bedrooms: 2 - 3

Garage: 2-car

Plan Number: P665

The ranch-style Allman plan features a quiet study, a spacious great room with an adjacent covered patio and a charming kitchen with a center island and breakfast nook. The relaxing master suite includes an oversized walk-in closet, and is separated from the second bedroom for privacy. You'll also appreciate the convenient mudroom and laundry off the 2-car garage. Personalization options include a gourmet kitchen and a third bedroom in lieu of the study.

Available elevations:



Elevation A



Elevation B



Elevation C



COMMUNITY LOCATION

7827 East Baltimore Street
Mesa, AZ 85207
877-444-1485

HOME GALLERY

16427 North Scottsdale Road, Suite 175
Scottsdale, AZ 85254
877-444-1485



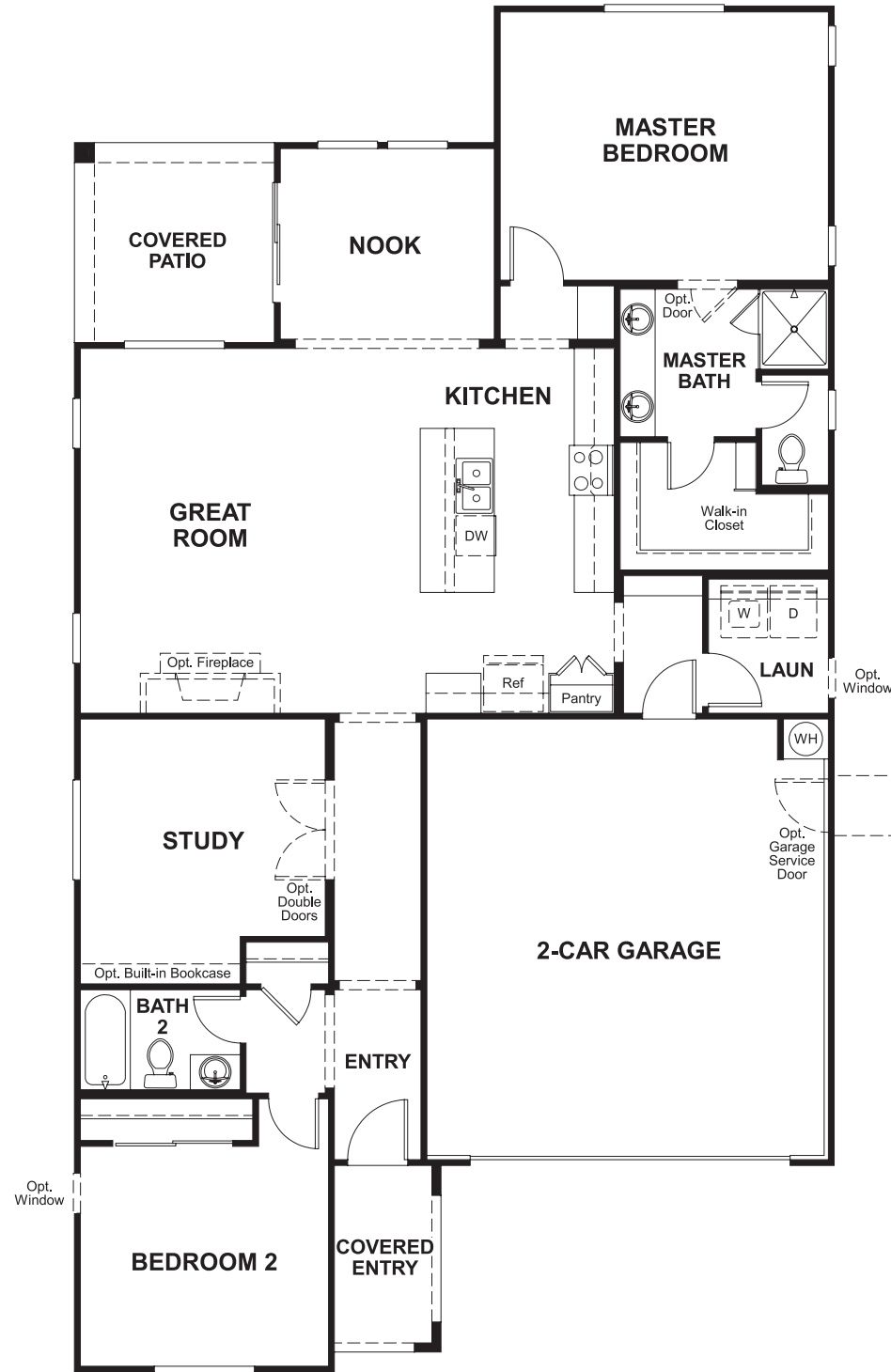
COMMUNITY LOCATION

7827 East Baltimore Street
Mesa, AZ 85207
877-444-1485

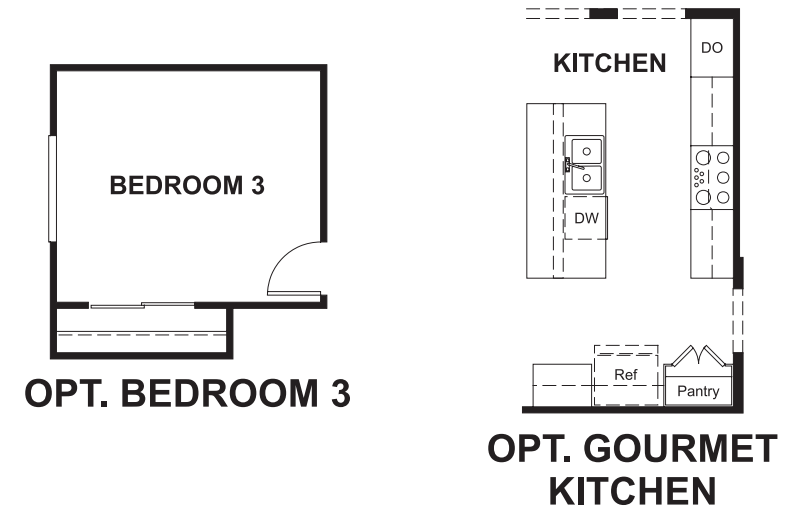
HOME GALLERY

16427 North Scottsdale Road, Suite 175
Scottsdale, AZ 85254
877-444-1485

Floor Plan
Main Floor



Floor Plan
Main Floor Options



THIS PLAN'S PROJECTED HERS® INDEX = TBD*
Projected Rating Based on Plans – Field Confirmation Required

How does this floor plan rate?
Take a look: **100** = Standard new home* **130** = Typical resale home**
The lower the number, the better! Refer to the RESNET® HERS index brochure or go to www.RESNET.us for details.

What's a HERS® Index? HERS stands for Home Energy Rating System, a system created by RESNET® to measure home energy efficiency.[^]
A Projected HERS index or rating is a computer simulation performed prior to construction by a third-party HERS rater using RESNET-accredited rating software, rated feature and specification data derived from home plans, features and specifications, and other data selected or assumed by the rater. The projected HERS index is approximate and is subject to change without notice. Actual results will vary.

*This information is presented for education purposes only. The HERS index for a confirmed rating will be determined by a third-party HERS rater based on data gathered from on-site observations and, if required, testing of rated features for a home as featured, optioned, located, oriented and/or built.
+Standard new home is based on the RESNET® Reference Home definition with a HERS® index of 100 (based on the 2006 International Energy Conservation Code).
++Typical resale home is based on the U.S. Department of Energy definition with a HERS® index of 130.

[^]RESNET® has developed the HERS® index to indicate the comparative efficiencies of homes. It is no guarantee that energy efficiencies will be achieved.