

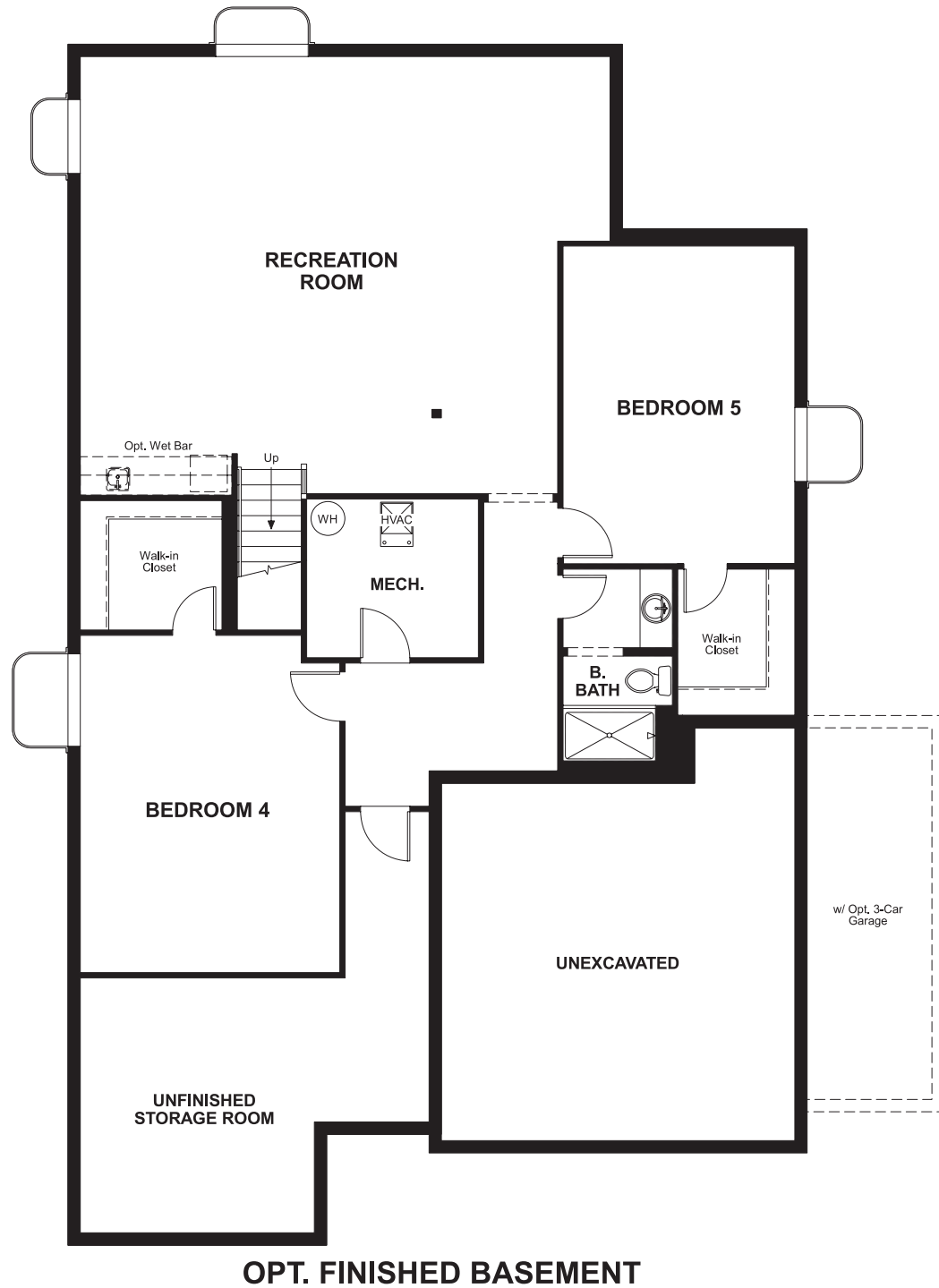
Jacoby Farm  
**AVALON**

**Approx. square feet:** 1,900  
**Stories:** 1  
**Bedrooms:** 2 - 5

**Garage:** 2- to 3-car  
**Plan Number:** D195

Jacoby Farm  
**AVALON**

**Floor Plan**  
Basement



**Elevation A**

**Available elevations:**



**Elevation A**



**Elevation B**



**Elevation C**



**Elevation D**



**Elevation E**



**Elevation F**

**Approx. square feet:** 1,900  
**Stories:** 1  
**Bedrooms:** 2 - 5  
**Garage:** 2- to 3-car  
**Plan Number:** D195

Enjoy a stylish ranch floor plan designed to adapt to your lifestyle in this new home. Add a bay window to the elegant dining room, or opt to convert it into a study or extra bedroom. Additional options include deluxe features in the master bath, a fireplace in the great room, an extension for the garage and a finished basement. Highlights of this new home include a covered patio, elegant formal dining room and a cheery breakfast nook.

**COMMUNITY LOCATION**  
367 Mannon Drive  
Windsor, CO 80550  
303-850-5750

**HOME GALLERY**  
8000 East Belleview Avenue, Suite C-12  
Greenwood Village CO 80111  
303-850-5750



**COMMUNITY LOCATION**  
367 Mannon Drive  
Windsor, CO 80550  
303-850-5750

**HOME GALLERY**  
8000 East Belleview Avenue, Suite C-12  
Greenwood Village CO 80111  
303-850-5750

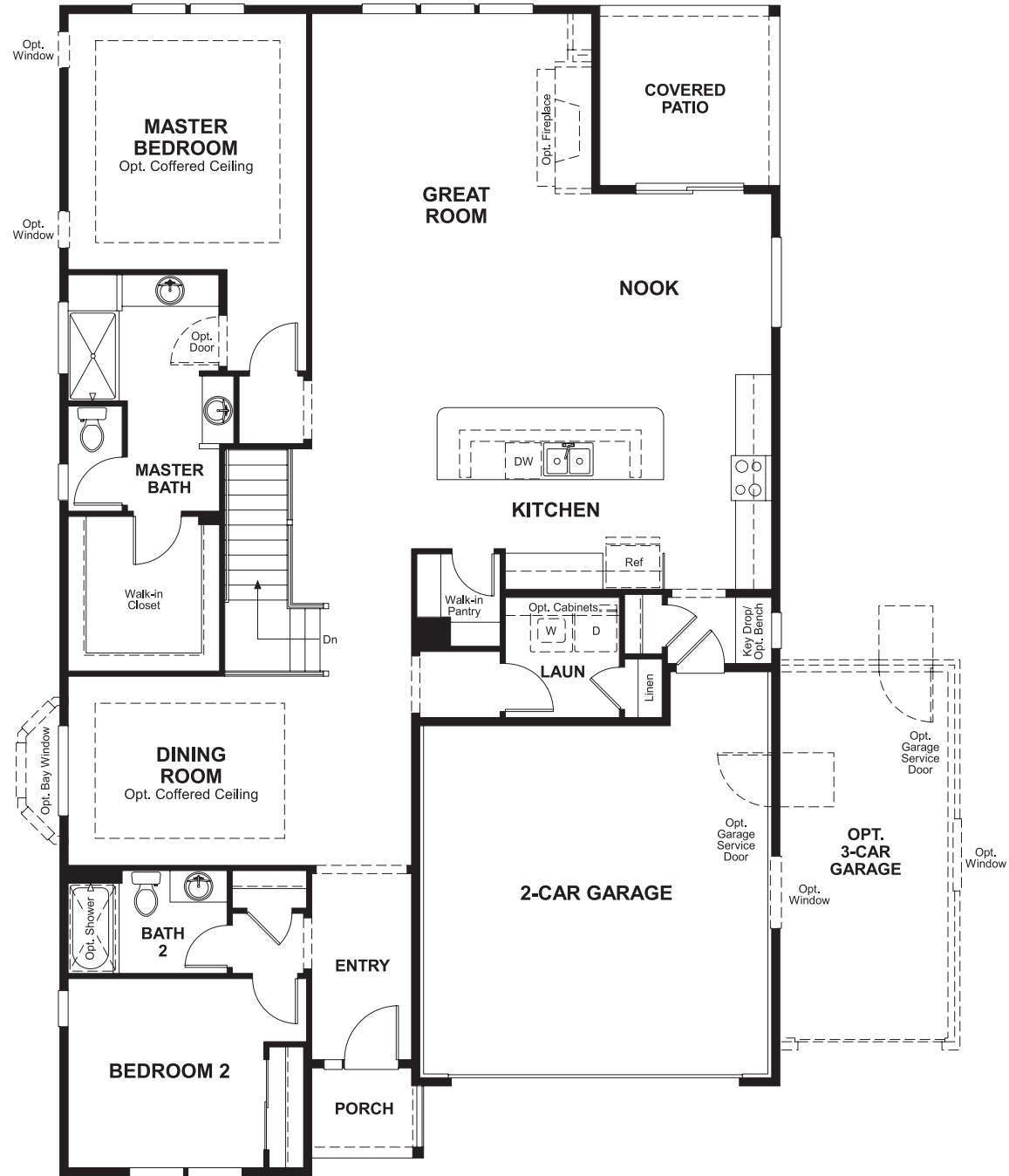


Jacoby Farm  
**AVALON**

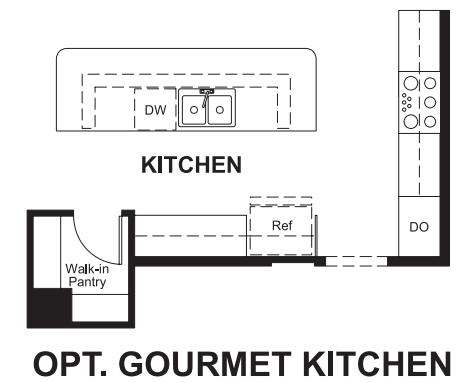
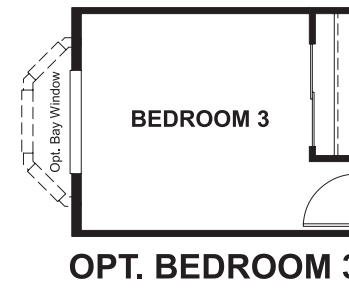
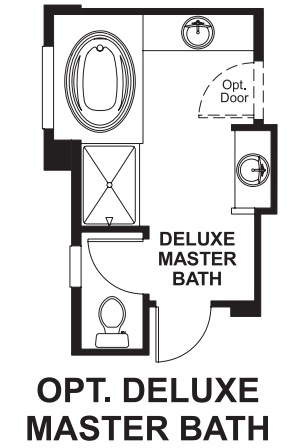
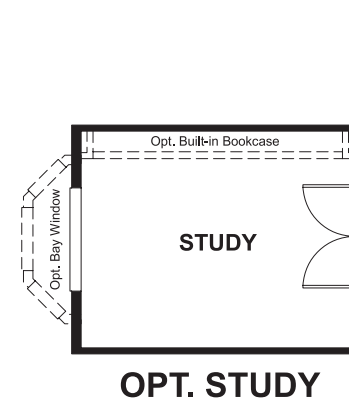
**Approx. square feet:** 1,900  
**Stories:** 1  
**Bedrooms:** 2 - 5

**Garage:** 2- to 3-car  
**Plan Number:** D195

**Floor Plan**  
Main Floor



**Floor Plan**  
Main Floor Options



**THIS PLAN'S PROJECTED  
HERS® INDEX = 60\***  
Projected Rating Based on Plans – Field Confirmation Required

**How does this floor plan rate?**

Take a look: **100** = Standard new home\* **130** = Typical resale home\*\*  
The lower the number, the better! Refer to the RESNET® HERS index brochure or go to [www.RESNET.us](http://www.RESNET.us) for details.

**What's a HERS® Index?** HERS stands for Home Energy Rating System, a system created by RESNET® to measure home energy efficiency.†

A Projected HERS index or rating is a computer simulation performed prior to construction by a third-party HERS rater using RESNET-accredited rating software, rated feature and specification data derived from home plans, features and specifications, and other data selected or assumed by the rater. The projected HERS index is approximate and is subject to change without notice. Actual results will vary.

\*This information is presented for education purposes only. The HERS index for a confirmed rating will be determined by a third-party HERS rater based on data gathered from on-site observations and, if required, testing of rated features for a home as featured, optioned, located, oriented and/or built.  
+Standard new home is based on the RESNET® Reference Home definition with a HERS® index of 100 (based on the 2006 International Energy Conservation Code).  
++Typical resale home is based on the U.S. Department of Energy definition with a HERS® index of 130.

†RESNET® has developed the HERS® index to indicate the comparative efficiencies of homes. It is no guarantee that energy efficiencies will be achieved.