

Toccata at Cadence
AVALON



Elevation A

Approx. square feet: 1,950
Stories: 1
Bedrooms: 3
Garage: 2-car
Plan Number: L195

The ranch-style Avalon plan features distinct living and entertaining spaces. On one side of the home, you'll find a relaxing master suite with an expansive walk-in closet, and two generous bedrooms separated by a convenient bath. The other side boasts a spacious great room and a gourmet kitchen with a center island, walk-in pantry, breakfast nook and adjacent covered patio. Options include a formal dining room, private study, extended covered patio and more!

Available elevations:



Elevation A



Elevation B



Elevation C

COMMUNITY LOCATION

Inflection Street and Cadence Crest Avenue
Henderson, NV 89011
702-638-4440

HOME GALLERY

7770 South Dean Martin Drive, Suite 308
Las Vegas, NV 89139
702-617-8400



COMMUNITY LOCATION

Inflection Street and Cadence Crest Avenue
Henderson, NV 89011
702-638-4440

HOME GALLERY

7770 South Dean Martin Drive, Suite 308
Las Vegas, NV 89139
702-617-8400

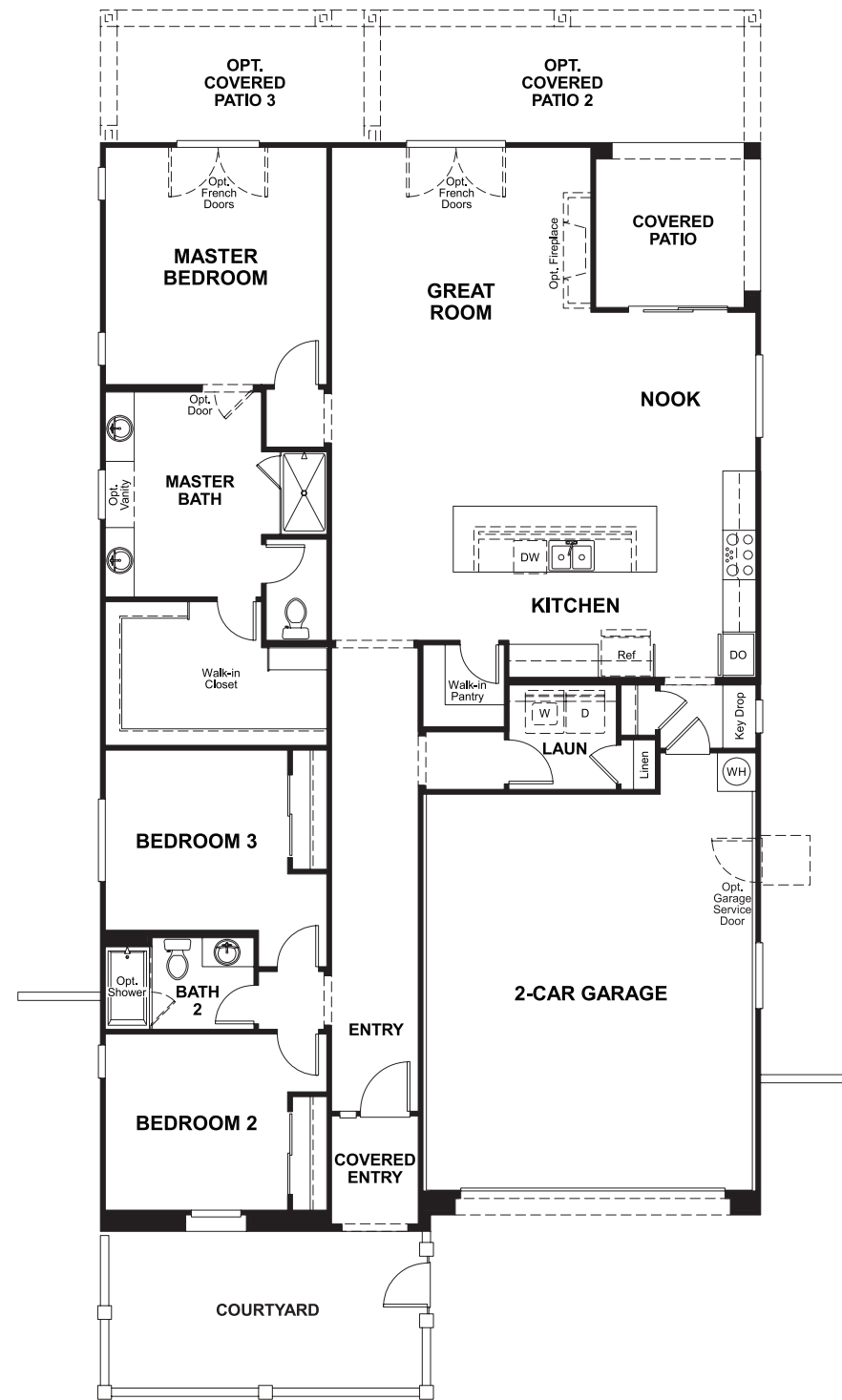


Toccata at Cadence
AVALON

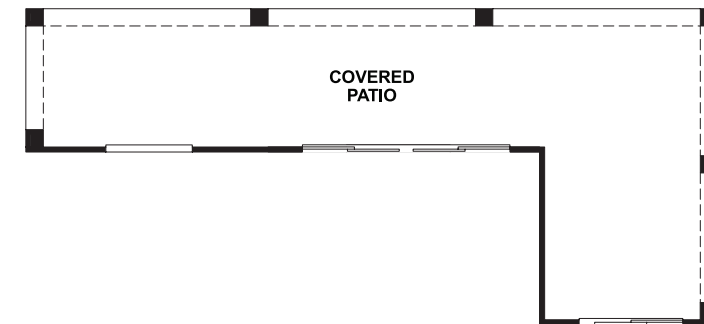
Approx. square feet: 1,950
Stories: 1
Bedrooms: 3

Garage: 2-car
Plan Number: L195

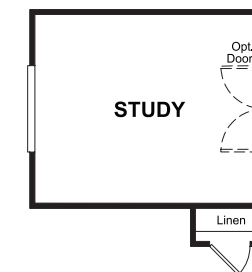
Floor Plan
Main Floor



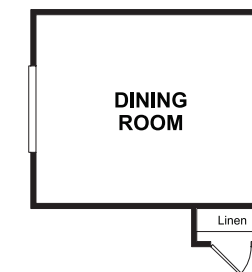
Floor Plan
Main Floor Options



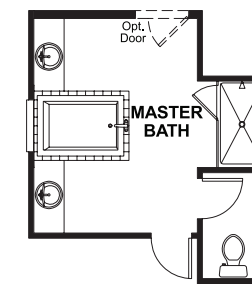
OPT. 12' SLIDING GLASS DOOR



OPT. STUDY



OPT. DINING ROOM



OPT. DELUXE MASTER BATH

THIS PLAN'S PROJECTED HERS® INDEX = 65*
Projected Rating Based on Plans – Field Confirmation Required

How does this floor plan rate?
Take a look: **100** = Standard new home* **130** = Typical resale home**
The lower the number, the better! Refer to the RESNET® HERS index brochure or go to www.RESNET.us for details.

What's a HERS® Index? HERS stands for Home Energy Rating System, a system created by RESNET® to measure home energy efficiency.[^]
A Projected HERS index or rating is a computer simulation performed prior to construction by a third-party HERS rater using RESNET-accredited rating software, rated feature and specification data derived from home plans, features and specifications, and other data selected or assumed by the rater. The projected HERS index is approximate and is subject to change without notice. Actual results will vary.

*This information is presented for education purposes only. The HERS index for a confirmed rating will be determined by a third-party HERS rater based on data gathered from on-site observations and, if required, testing of rated features for a home as featured, optioned, located, oriented and/or built.
+Standard new home is based on the RESNET® Reference Home definition with a HERS® index of 100 (based on the 2006 International Energy Conservation Code).
++Typical resale home is based on the U.S. Department of Energy definition with a HERS® index of 130.

[^]RESNET® has developed the HERS® index to indicate the comparative efficiencies of homes. It is no guarantee that energy efficiencies will be achieved.