

Skyline Ridge  
**BELLE**



**Elevation A**

**Approx. square feet:** 2,750  
**Stories:** 2  
**Bedrooms:** 4 - 5  
**Garage:** 2-car  
**Plan Number:** L27B

The Belle plan welcomes guests with a two-story entry. A formal dining room, spacious great room and open kitchen provide ample space for entertaining. Upstairs, you'll find a loft area, three inviting bedrooms and a master suite with an immense walk-in closet. Options include a study and a master sitting room.

**Available elevations:**



**Elevation A**



**Elevation B**



**Elevation C**

**COMMUNITY LOCATION**

Grand Canyon Drive and Ford Avenue  
 Las Vegas, NV 89178  
 702-638-4440

**HOME GALLERY**

7770 South Dean Martin Drive, Suite 308  
 Las Vegas, NV 89139  
 702-617-8400



**COMMUNITY LOCATION**

Grand Canyon Drive and Ford Avenue  
 Las Vegas, NV 89178  
 702-638-4440

**HOME GALLERY**

7770 South Dean Martin Drive, Suite 308  
 Las Vegas, NV 89139  
 702-617-8400

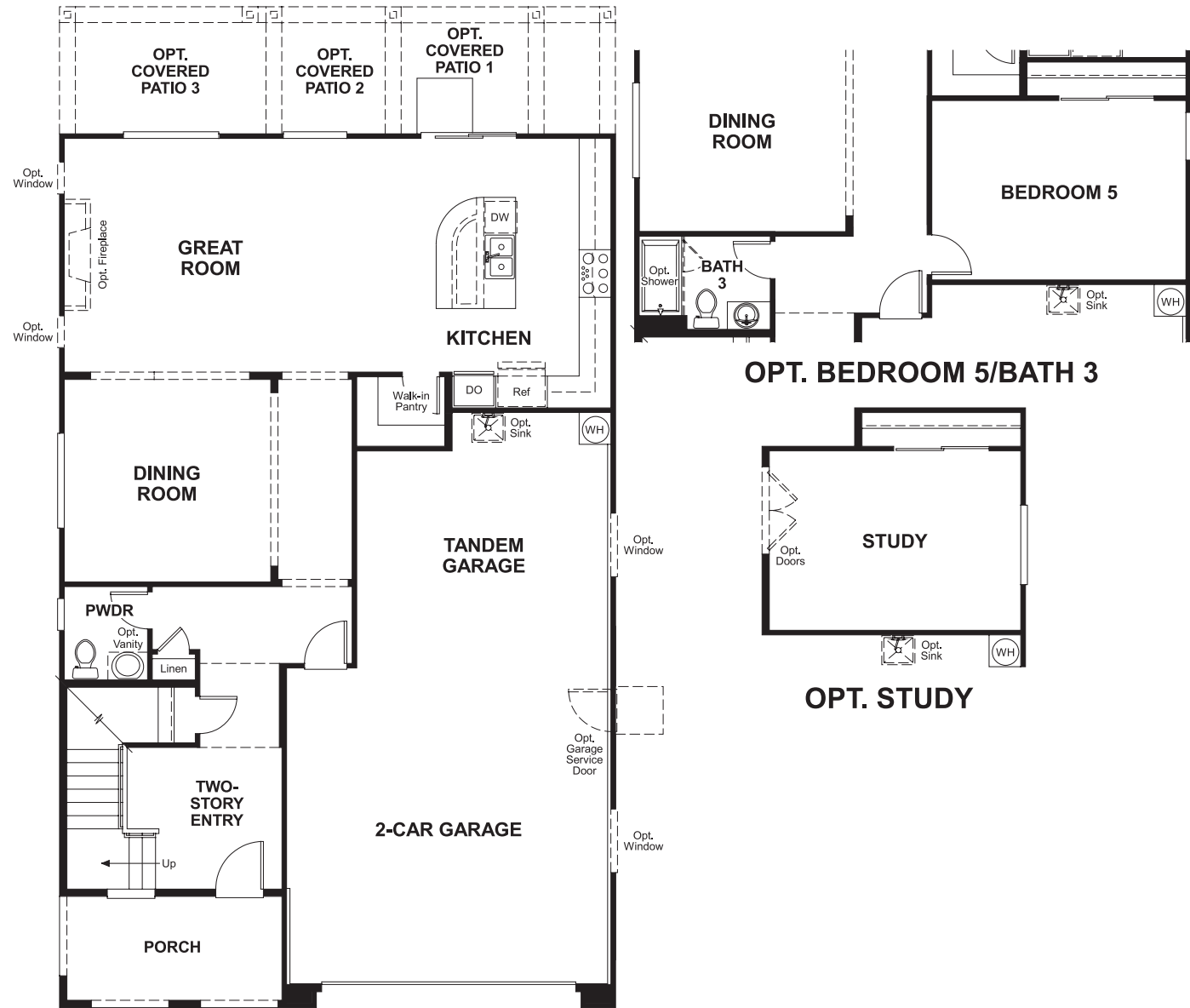


Skyline Ridge  
**BELLE**

**Approx. square feet:** 2,750  
**Stories:** 2  
**Bedrooms:** 4 - 5

**Garage:** 2-car  
**Plan Number:** L27B

**Floor Plan**  
Main Floor



**Floor Plan**  
Second Floor

