

Horizon Park
BURTON



Elevation A

Approx. square feet: 2,200
Stories: 2
Bedrooms: 4 - 5
Garage: 2-car
Plan Number: L222

The Burton combines inviting gathering spaces with comfortable retreats. The main floor features a living room off the entryway and an open great room adjacent to the kitchen and breakfast nook. The upstairs boasts a versatile loft area and a spacious master suite. Enjoy options such as a covered patio and a dining room in lieu of the living room.

Available elevations:



Elevation A



Elevation B



Elevation C

COMMUNITY LOCATION
 4008 Celebration Cove Street
 North Las Vegas, NV 89032
 702-638-4440

HOME GALLERY
 7770 South Dean Martin Drive, Suite 308
 Las Vegas, NV 89139
 702-617-8400

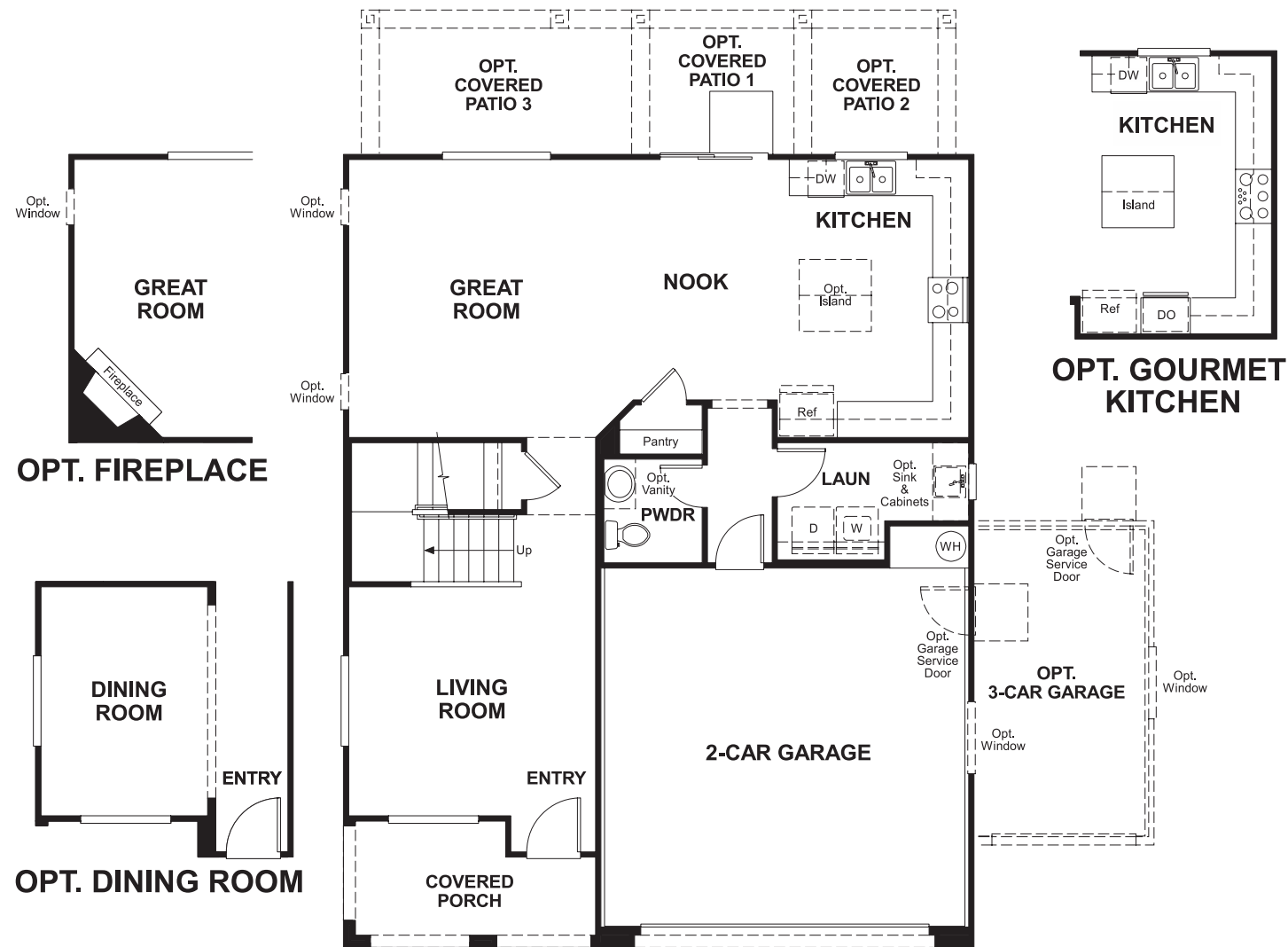


COMMUNITY LOCATION
 4008 Celebration Cove Street
 North Las Vegas, NV 89032
 702-638-4440

HOME GALLERY
 7770 South Dean Martin Drive, Suite 308
 Las Vegas, NV 89139
 702-617-8400



Floor Plan
Main Floor



Floor Plan
Upper Floor



**THIS PLAN'S PROJECTED
HERS® INDEX = 70***
Projected Rating Based on Plans – Field Confirmation Required

How does this floor plan rate?
Take a look: **100** = Standard new home* **130** = Typical resale home**
The lower the number, the better! Refer to the RESNET® HERS index brochure or go to www.RESNET.us for details.

What's a HERS® Index? HERS stands for Home Energy Rating System, a system created by RESNET® to measure home energy efficiency.[^]
A Projected HERS index or rating is a computer simulation performed prior to construction by a third-party HERS rater using RESNET-accredited rating software, rated feature and specification data derived from home plans, features and specifications, and other data selected or assumed by the rater. The projected HERS index is approximate and is subject to change without notice. Actual results will vary.

*This information is presented for education purposes only. The HERS index for a confirmed rating will be determined by a third-party HERS rater based on data gathered from on-site observations and, if required, testing of rated features for a home as featured, optioned, located, oriented and/or built.
+Standard new home is based on the RESNET® Reference Home definition with a HERS® index of 100 (based on the 2006 International Energy Conservation Code).
++Typical resale home is based on the U.S. Department of Energy definition with a HERS® index of 130.

[^]RESNET® has developed the HERS® index to indicate the comparative efficiencies of homes. It is no guarantee that energy efficiencies will be achieved.