

Sienna Hills
CAROLINE



Elevation A

Approx. square feet: 3,100
Stories: 2
Bedrooms: 5
Garage: 2-car
Plan Number: P561

The inspired Caroline plan greets guests with a charming covered front porch. The main floor features a quiet study, a formal dining room, an expansive great room and an inviting kitchen with a center island and optional gourmet feature. You'll also appreciate convenient bedroom with full bath. Upstairs, you'll find a spacious loft and elegant master suite with an optional deluxe bath. An optional guest suite is also available.

Available elevations:



Elevation A



Elevation B - Shown with optional stone



Elevation C

COMMUNITY LOCATION

1641 North 214th Avenue
 Buckeye, AZ 85396
 877-444-1485

HOME GALLERY

16427 North Scottsdale Road, Suite 175
 Scottsdale, AZ 85254
 877-444-1485



COMMUNITY LOCATION

1641 North 214th Avenue
 Buckeye, AZ 85396
 877-444-1485

HOME GALLERY

16427 North Scottsdale Road, Suite 175
 Scottsdale, AZ 85254
 877-444-1485

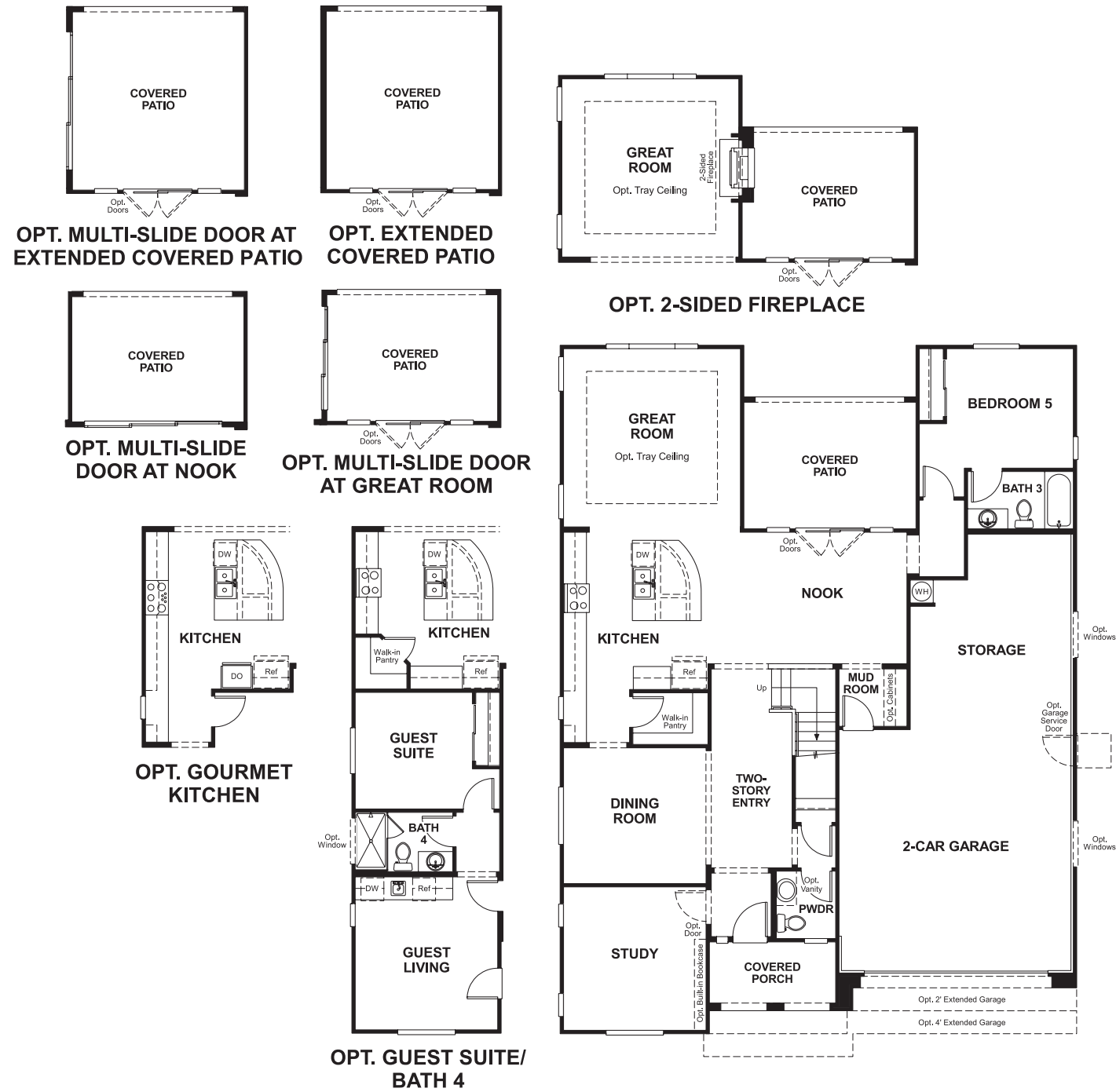


Sienna Hills
CAROLINE

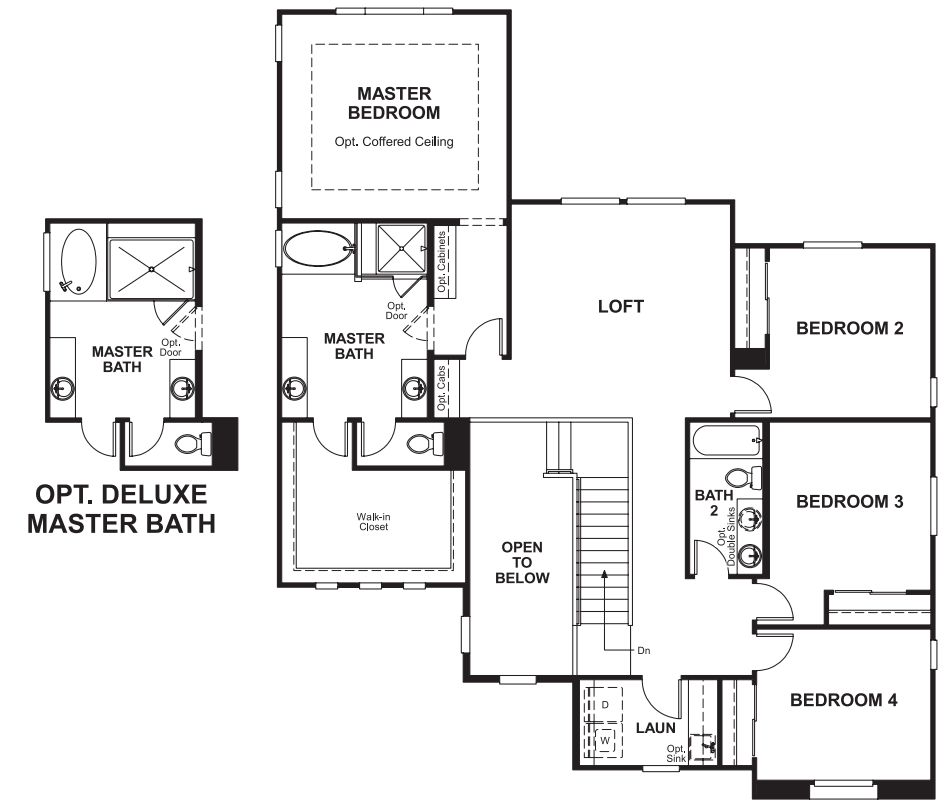
Approx. square feet: 3,100
Stories: 2
Bedrooms: 5

Garage: 2-car
Plan Number: P561

Floor Plan
Main Floor



Floor Plan
Second Floor



**THIS PLAN'S PROJECTED
HERS® INDEX = 66***
Projected Rating Based on Plans – Field Confirmation Required

How does this floor plan rate?
Take a look: **100** = Standard new home* **130** = Typical resale home**
The lower the number, the better! Refer to the RESNET® HERS index brochure or go to www.RESNET.us for details.

What's a HERS® Index? HERS stands for Home Energy Rating System, a system created by RESNET® to measure home energy efficiency. A Projected HERS index or rating is a computer simulation performed prior to construction by a third-party HERS rater using RESNET-accredited rating software, rated feature and specification data derived from home plans, features and specifications, and other data selected or assumed by the rater. The projected HERS index is approximate and is subject to change without notice. Actual results will vary.

*This information is presented for education purposes only. The HERS index for a confirmed rating will be determined by a third-party HERS rater based on data gathered from on-site observations and, if required, testing of rated features for a home as featured, optioned, located, oriented and/or built.
+Standard new home is based on the RESNET® Reference Home definition with a HERS® index of 100 (based on the 2006 International Energy Conservation Code).
++Typical resale home is based on the U.S. Department of Energy definition with a HERS® index of 130.

^RESNET® has developed the HERS® index to indicate the comparative efficiencies of homes. It is no guarantee that energy efficiencies will be achieved.