

Travis Park II  
**CAROLINE**



**Elevation A**

**Approx. square feet:** 3,100  
**Stories:** 2  
**Bedrooms:** 5 - 6  
**Garage:** 2-Car  
**Plan Number:** P561

The inspired Caroline plan greets guests with a charming covered front porch. The main floor features a quiet study, a formal dining room, an expansive great room and an inviting kitchen with a center island and optional gourmet features. You'll also appreciate the convenient bedroom with full bath. Upstairs, you'll find a spacious loft and an elegant master suite with an optional deluxe bath. An optional guest suite is also available.

**Available elevations:**



**Elevation A**



**Elevation B - Shown with Optional Stone**



**Elevation C - Shown with Optional Stone**



**COMMUNITY LOCATION**

556 North 157<sup>th</sup> Drive  
 Goodyear, AZ 85338  
 877-444-1485

**HOME GALLERY**

16427 North Scottsdale Road, Suite 175  
 Scottsdale, AZ 85254  
 877-444-1485



**COMMUNITY LOCATION**

556 North 157<sup>th</sup> Drive  
 Goodyear, AZ 85338  
 877-444-1485

**HOME GALLERY**

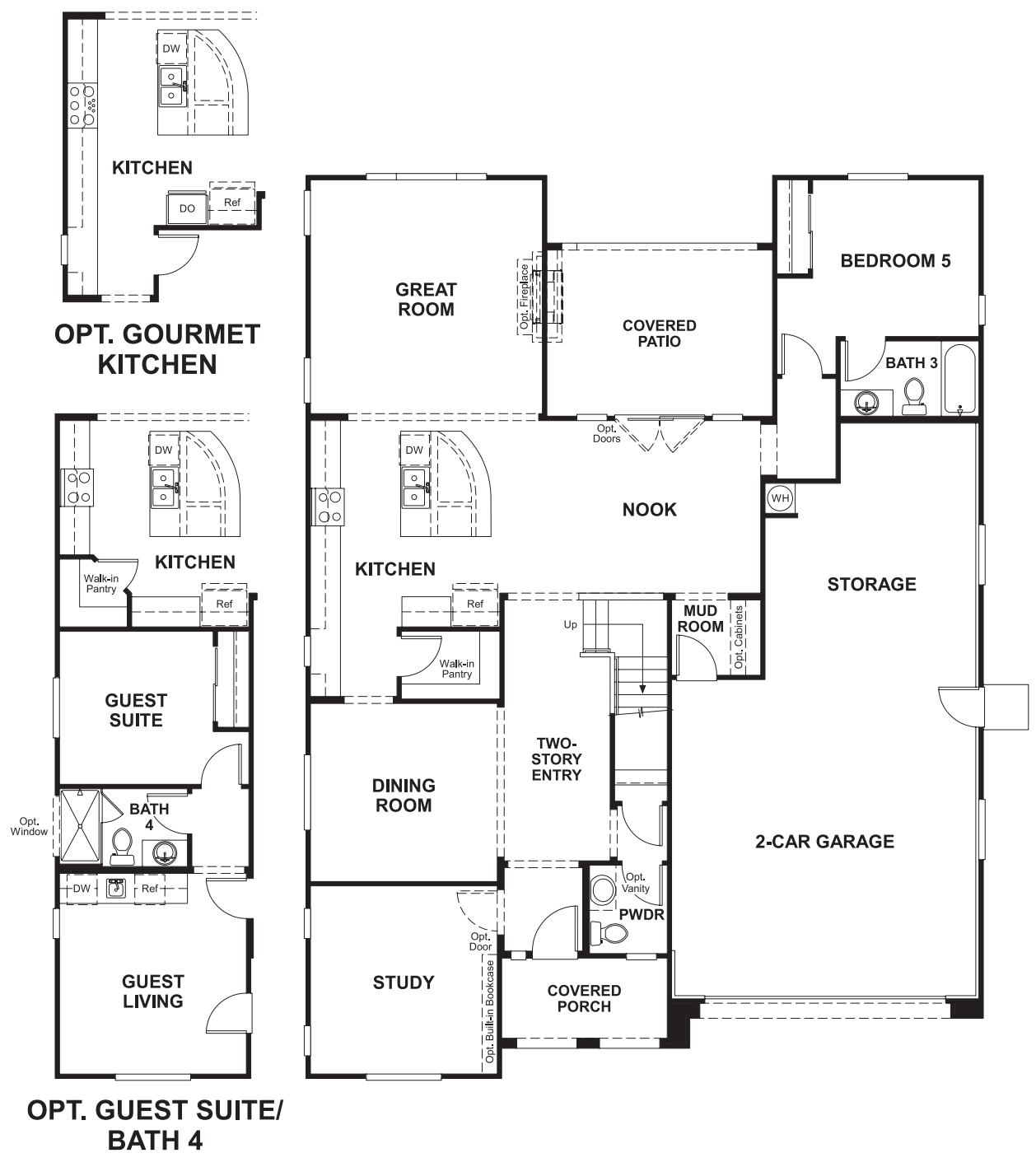
16427 North Scottsdale Road, Suite 175  
 Scottsdale, AZ 85254  
 877-444-1485

Travis Park II  
**CAROLINE**

**Approx. square feet:** 3,100  
**Stories:** 2  
**Bedrooms:** 5 - 6

**Garage:** 2-Car  
**Plan Number:** P561

**Floor Plan**  
Main Floor



**Floor Plan**  
Second Floor



**THIS PLAN'S PROJECTED HERS® INDEX = 67**  
Projected Rating Based on Plans – Field Confirmation Required

**How does this floor plan rate?**  
Take a look: **100** = Standard new home\* **130** = Typical resale home\*\*  
The lower the number, the better! Refer to the RESNET® HERS index brochure or go to [www.RESNET.us](http://www.RESNET.us) for details.

**What's a HERS® Index?** HERS stands for Home Energy Rating System, a system created by RESNET® to measure home energy efficiency.<sup>^</sup>  
A Projected HERS index or rating is a computer simulation performed prior to construction by a third-party HERS rater using RESNET-accredited rating software, rated feature and specification data derived from home plans, features and specifications, and other data selected or assumed by the rater. The projected HERS index is approximate and is subject to change without notice. Actual results will vary.

\*This information is presented for education purposes only. The HERS index for a confirmed rating will be determined by a third-party HERS rater based on data gathered from on-site observations and, if required, testing of rated features for a home as featured, optioned, located, oriented and/or built.  
+Standard new home is based on the RESNET® Reference Home definition with a HERS® index of 100 (based on the 2006 International Energy Conservation Code).  
\*\*Typical resale home is based on the U.S. Department of Energy definition with a HERS® index of 130.

<sup>^</sup>RESNET® has developed the HERS® index to indicate the comparative efficiencies of homes. It is no guarantee that energy efficiencies will be achieved.