

CLAIBORNE



Elevation A

Approx. square feet: 2,700

Stories: 1

Bedrooms: 4

Garage: 2- to 3-car

Plan Number: F268

This ranch home has a spacious feel, complete with a great room and open kitchen with adjoining nook. Formal living and dining rooms are great for entertaining. You'll also love the covered backyard patio and master suite with private bath. Options include a study, additional bathroom, gourmet kitchen and extended patio.

Available elevations:



Elevation A



Elevation B



Elevation C - Shown with opt stone



Elevation J

HOME GALLERY

2822 Commerce Park Drive, Suite 100
Orlando, FL 32819



HOME GALLERY

2822 Commerce Park Drive, Suite 100
Orlando, FL 32819

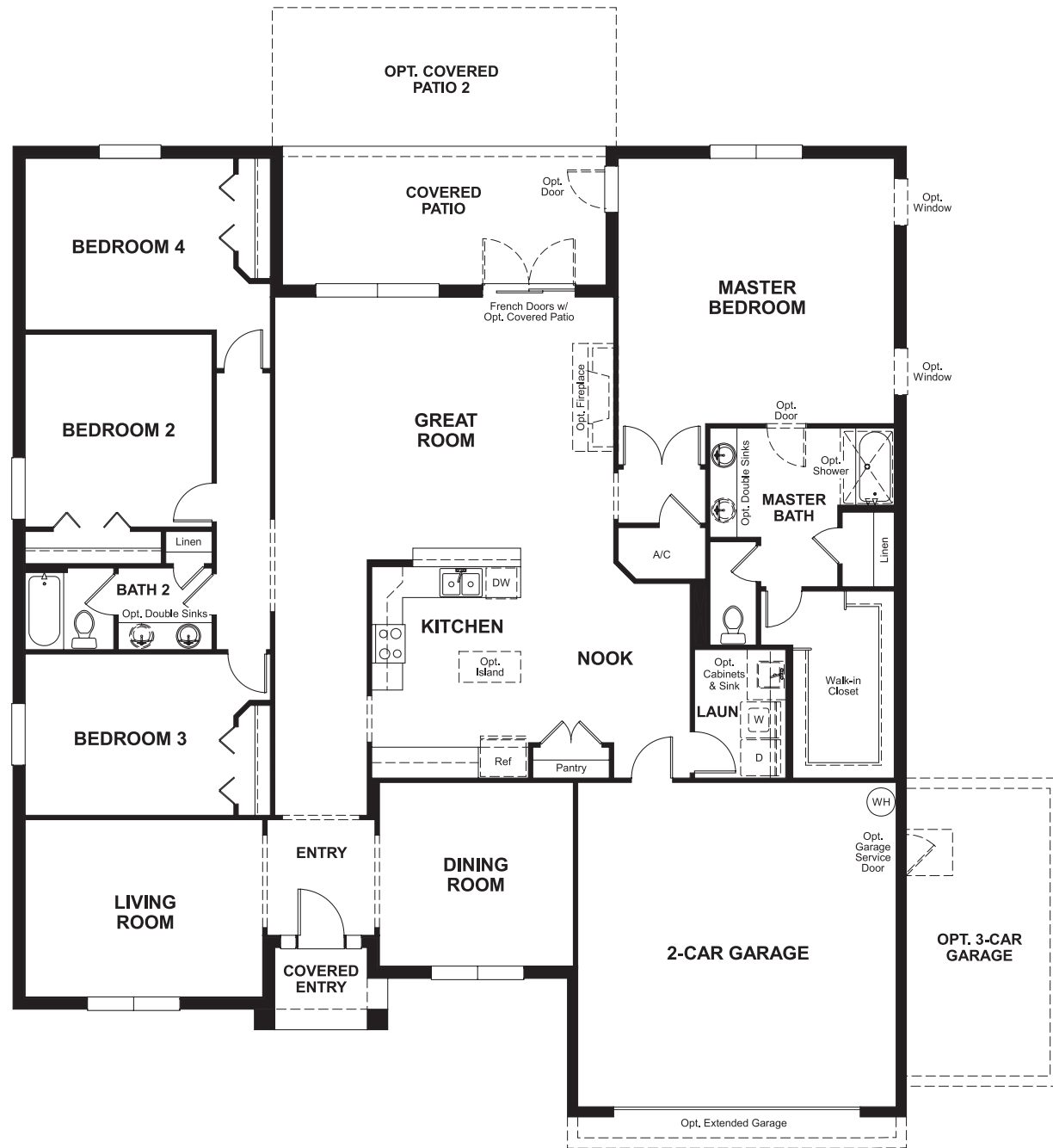


CLAIBORNE

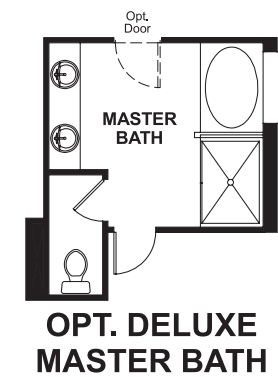
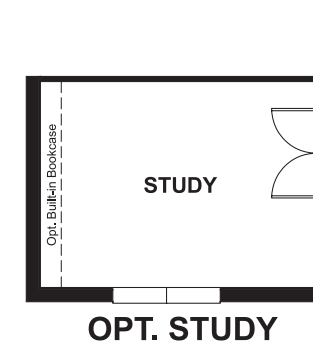
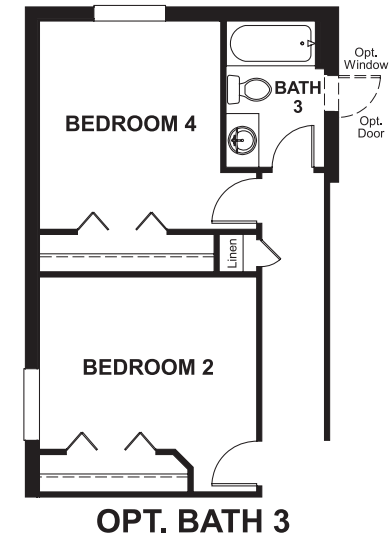
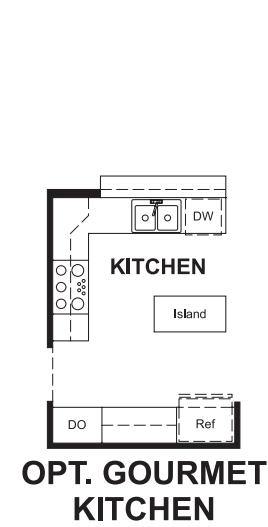
Approx. square feet: 2,700
Stories: 1
Bedrooms: 4

Garage: 2- to 3-car
Plan Number: F268

Floor Plan
Main Floor



Floor Plan
Main Floor Options



THIS PLAN'S PROJECTED HERS® INDEX = 68*
Projected Rating Based on Plans – Field Confirmation Required

How does this floor plan rate?
Take a look: **100** = Standard new home* **130** = Typical resale home**
The lower the number, the better! Refer to the RESNET® HERS index brochure or go to www.RESNET.us for details.

What's a HERS® Index? HERS stands for Home Energy Rating System, a system created by RESNET® to measure home energy efficiency.[^]
A Projected HERS index or rating is a computer simulation performed prior to construction by a third-party HERS rater using RESNET-accredited rating software, rated feature and specification data derived from home plans, features and specifications, and other data selected or assumed by the rater. The projected HERS index is approximate and is subject to change without notice. Actual results will vary.

*This information is presented for education purposes only. The HERS index for a confirmed rating will be determined by a third-party HERS rater based on data gathered from on-site observations and, if required, testing of rated features for a home as featured, optioned, located, oriented and/or built.
+Standard new home is based on the RESNET® Reference Home definition with a HERS® index of 100 (based on the 2006 International Energy Conservation Code).
**Typical resale home is based on the U.S. Department of Energy definition with a HERS® index of 130.

[^]RESNET® has developed the HERS® index to indicate the comparative efficiencies of homes. It is no guarantee that energy efficiencies will be achieved.