



APPROX. SQUARE FEET: 1,700
STORIES: 2
BEDROOMS: 3 - 4
GARAGE: 2-car
PLAN NUMBER: P903

The main floor of this delightful plan offers a large, uninterrupted space for relaxing, entertaining and dining. The kitchen features a large center island with seating and opens to the dining room, great room and a covered patio for outdoor living space. Upstairs, there's a large loft, a full bath tucked between two inviting bedrooms, and a private master suite with walk-in closet and convenient master bath. Add a bedroom in lieu of the loft.

Available elevation:



Elevation A



Elevation B



Elevation C

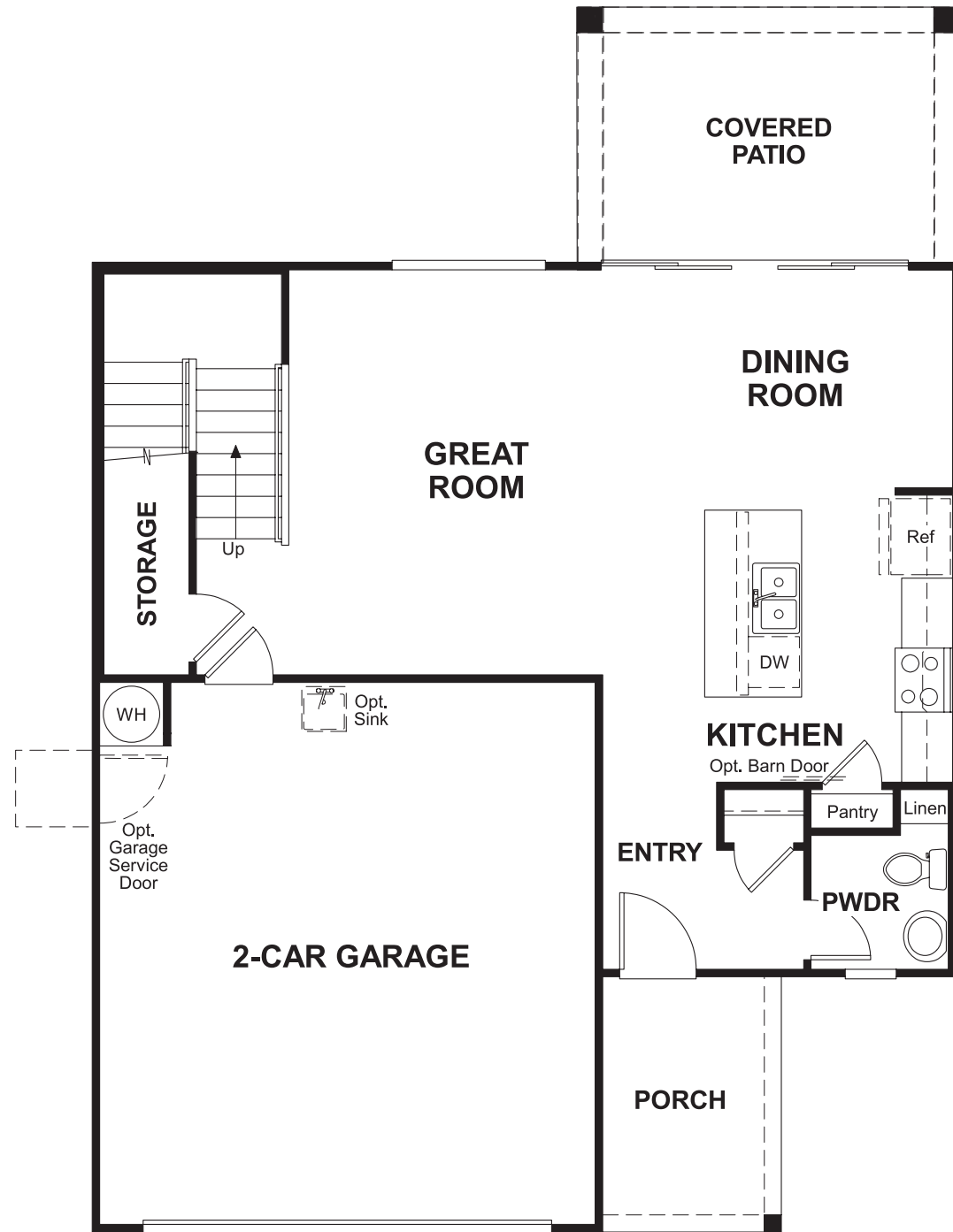
COMMUNITY LOCATION
 19376 North Crestview Lane
 Maricopa, AZ 85138
 520-316-4355



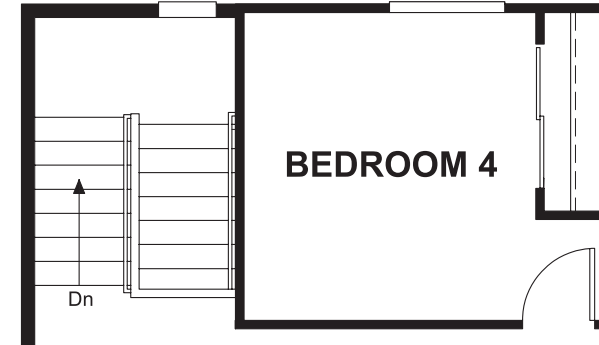
HOME GALLERY
 16427 North Scottsdale Road, Suite 175
 Scottsdale, AZ 85254
 877-444-1485

RICHMONDAMERICAN.COM/SEASONS

FLOOR PLAN
MAIN FLOOR



FLOOR PLAN
SECOND FLOOR



OPT. BEDROOM 4

