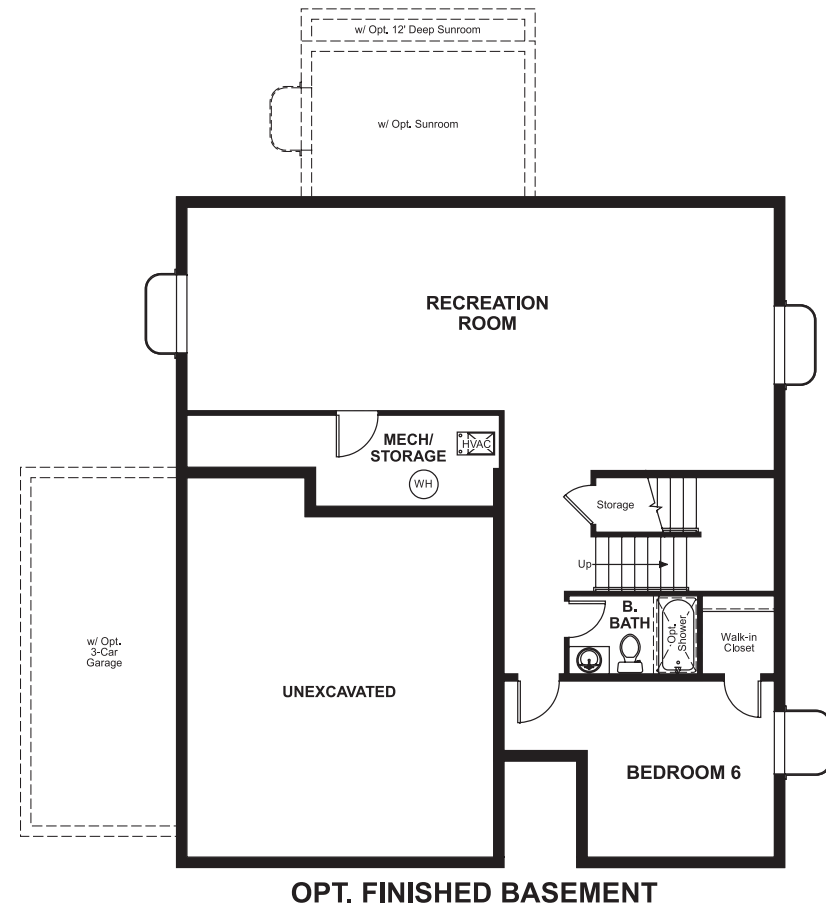


Copperleaf
CORONADO

Approx. square feet: 2,600
Stories: 2
Bedrooms: 3 - 6

Garage: 2- to 3-car
Plan Number: D723

Floor Plan
Basement



Copperleaf
CORONADO

Approx. square feet: 2,600
Stories: 2
Bedrooms: 3 - 6
Garage: 2- to 3-car
Plan Number: D723

The main floor of the Coronado floor plan provides spaces for working and entertaining. Just off the entry are a study and a powder room. At the back of the home, enjoy an open great room, dining room and kitchen, complete with center island and walk-in pantry off the mudroom. Three bedrooms, a generous loft, a laundry and two baths are located upstairs. Add up to two additional bedrooms, a third garage bay and a sunroom!



Elevation A

Available elevations:



Elevation A



Elevation B



Elevation C



Elevation D



Elevation E

COMMUNITY LOCATION
22320 East Chenango Drive
Aurora, CO 80015
720-850-5750

HOME GALLERY
8000 East Belleview Avenue, Suite C-12
Greenwood Village, CO 80111
888-402-4663



COMMUNITY LOCATION
22320 East Chenango Drive
Aurora, CO 80015
720-850-5750

HOME GALLERY
8000 East Belleview Avenue, Suite C-12
Greenwood Village, CO 80111
888-402-4663

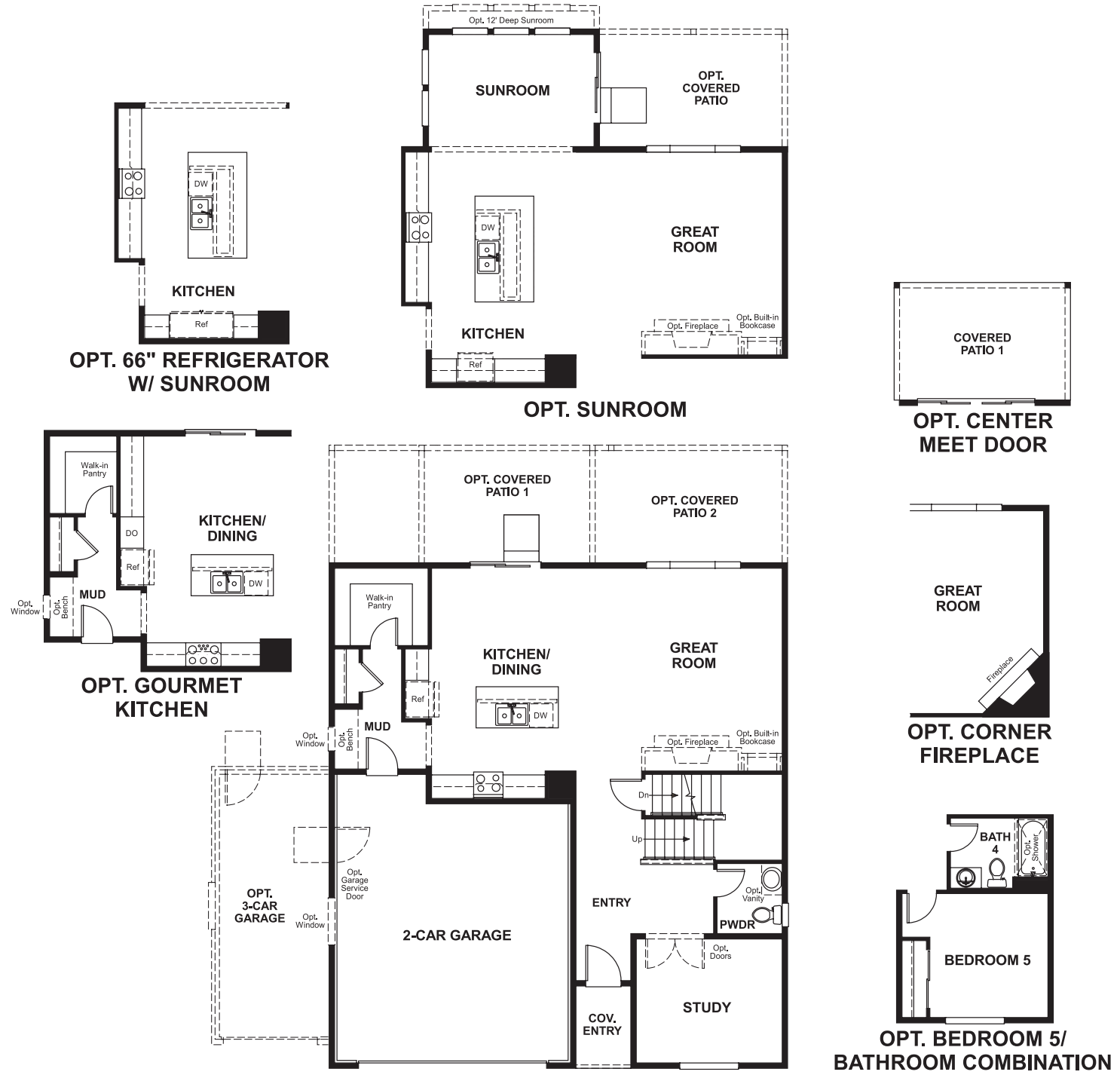


Copperleaf
CORONADO

Approx. square feet: 2,600
Stories: 2
Bedrooms: 3 - 6

Garage: 2- to 3-car
Plan Number: D723

Floor Plan
Main Floor



Floor Plan
Second Floor

