

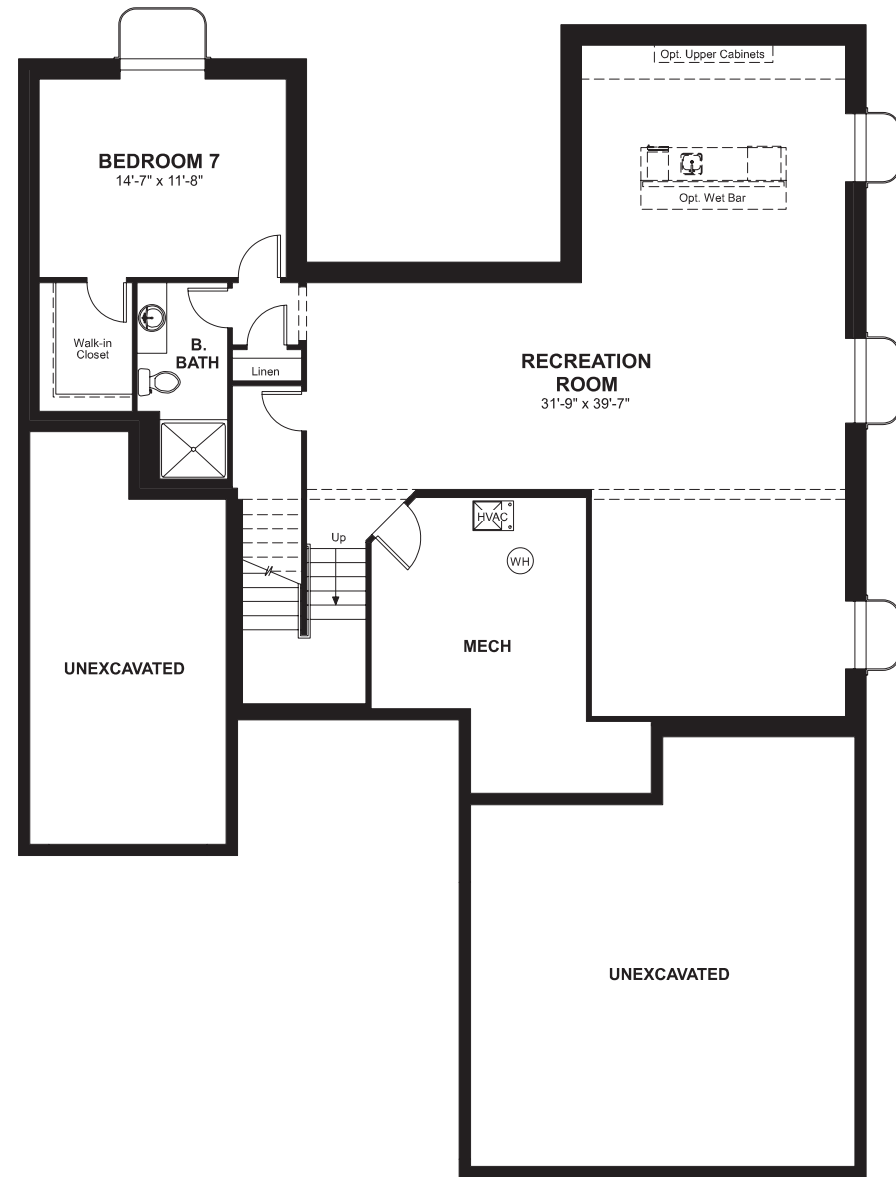
Gambel Oak
DALEY

Approx. square feet: 3,300
Stories: 2
Bedrooms: 5 - 7

Garage: 3-car
Plan Number: D600

Gambel Oak
DALEY

Floor Plan
Basement



OPT. FINISHED BASEMENT



Elevation A

Available elevations:



Elevation A



Elevation B



Elevation C

Approx. square feet: 3,300
Stories: 2
Bedrooms: 5 - 7
Garage: 3-car
Plan Number: D600

The main floor of the Daley plan offers an open dining room and an expansive great room that flows into a gourmet kitchen with center island and walk-in pantry. You'll also appreciate a convenient bedroom with full bath, a quiet study and a relaxing covered patio. Upstairs features a large loft and four inviting bedrooms, including an elegant master suite with optional deluxe bath. Other personalization options include a chef's kitchen, an extra bedroom in lieu of the loft and a finished basement.

COMMUNITY LOCATION
2204 Tree Top Drive
Castle Rock, CO 80109
303-850-5750

HOME GALLERY
8000 East Bellview Avenue, Suite C-12
Greenwood Village, CO 80111
888-402-4663

COMMUNITY LOCATION
2204 Tree Top Drive
Castle Rock, CO 80109
303-850-5750

HOME GALLERY
8000 East Bellview Avenue, Suite C-12
Greenwood Village, CO 80111
888-402-4663

