

Connor Hills
DALEY



Elevation A

Available elevations:



Elevation A



Elevation B



Elevation C

Approx. square feet: 3,400

Stories: 2

Bedrooms: 5 - 6

Garage: 3-car

Plan Number: L600

A grand two-story entry welcomes guests to the inviting Daley plan. The main floor offers a private study, a spacious great room with optional fireplace and a gourmet kitchen with an immense center island, walk-in pantry, nook and adjacent covered patio. You'll also appreciate the convenient bedroom with full bath. Upstairs, the lavish master suite boasts a deluxe bath and is separated from three additional bedrooms by an inviting loft. Personalize this plan with a formal dining room and multi-slide patio doors.

COMMUNITY LOCATION

Deer Springs Way & Grand Canyon Drive
Las Vegas, NV 89149
702-638-4440

HOME GALLERY

7770 South Dean Martin Drive, Suite 308
Las Vegas, NV 89129
702-617-8400



COMMUNITY LOCATION

Deer Springs Way & Grand Canyon Drive
Las Vegas, NV 89149
702-638-4440

HOME GALLERY

7770 South Dean Martin Drive, Suite 308
Las Vegas, NV 89129
702-617-8400

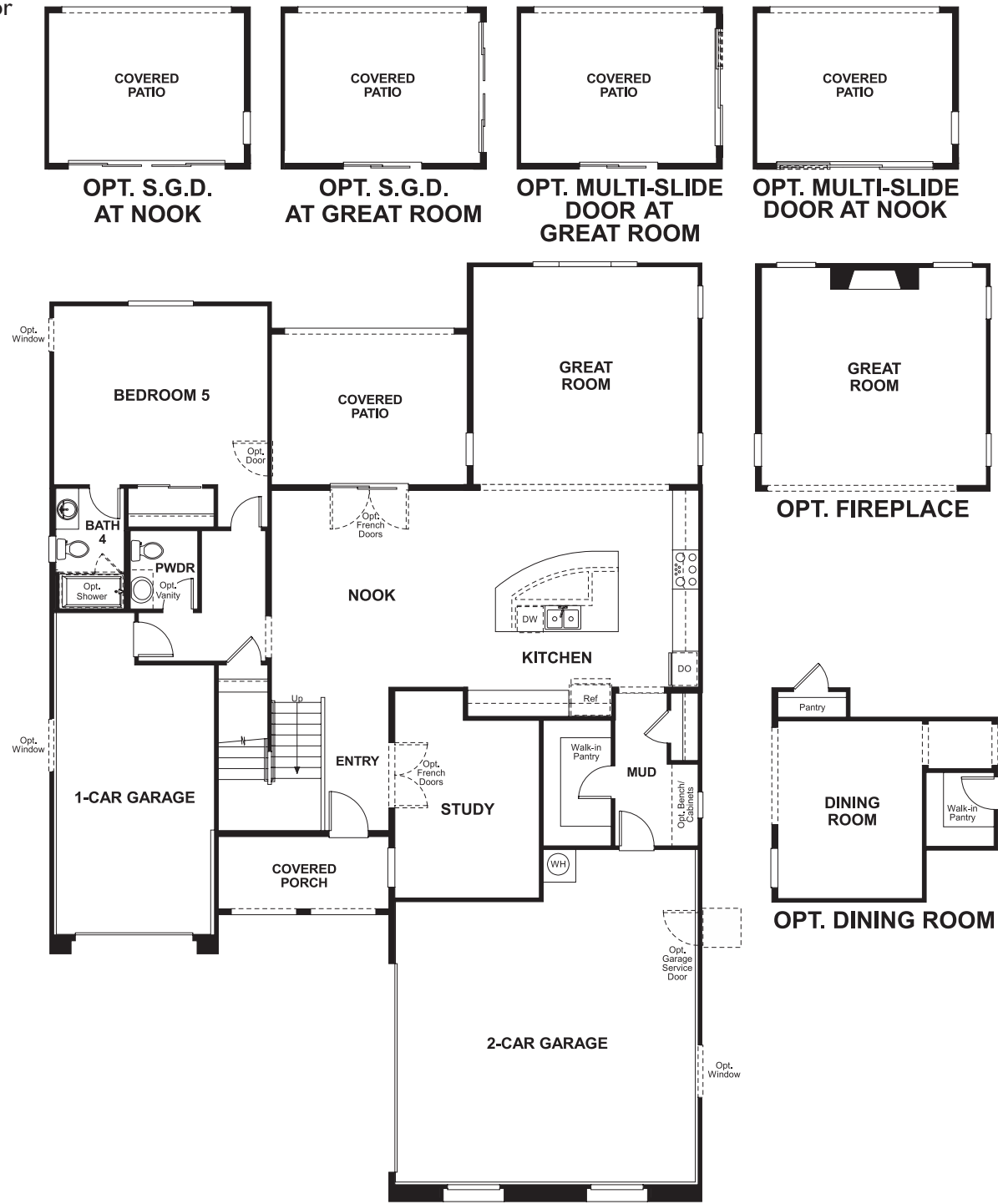


Connor Hills
DALEY

Approx. square feet: 3,400
Stories: 2
Bedrooms: 5 - 6

Garage: 3-car
Plan Number: L600

Floor Plan
Main Floor



Floor Plan
Second Floor



THIS PLAN'S PROJECTED HERS® INDEX = TBD*
Projected Rating Based on Plans – Field Confirmation Required

How does this floor plan rate?
Take a look: **100** = Standard new home* **130** = Typical resale home**
The lower the number, the better! Refer to the RESNET® HERS index brochure or go to www.RESNET.us for details.

What's a HERS® Index? HERS stands for Home Energy Rating System, a system created by RESNET® to measure home energy efficiency.^A
A Projected HERS index or rating is a computer simulation performed prior to construction by a third-party HERS rater using RESNET-accredited rating software, rated feature and specification data derived from home plans, features and specifications, and other data selected or assumed by the rater. The projected HERS index is approximate and is subject to change without notice. Actual results will vary.

^{*}This information is presented for education purposes only. The HERS index for a confirmed rating will be determined by a third-party HERS rater based on data gathered from on-site observations and, if required, testing of rated features for a home as featured, optioned, located, oriented and/or built.
⁺Standard new home is based on the RESNET® Reference Home definition with a HERS® index of 100 (based on the 2006 International Energy Conservation Code).
⁺⁺Typical resale home is based on the U.S. Department of Energy definition with a HERS® index of 130.

^ARESNET® has developed the HERS® index to indicate the comparative efficiencies of homes. It is no guarantee that energy efficiencies will be achieved.