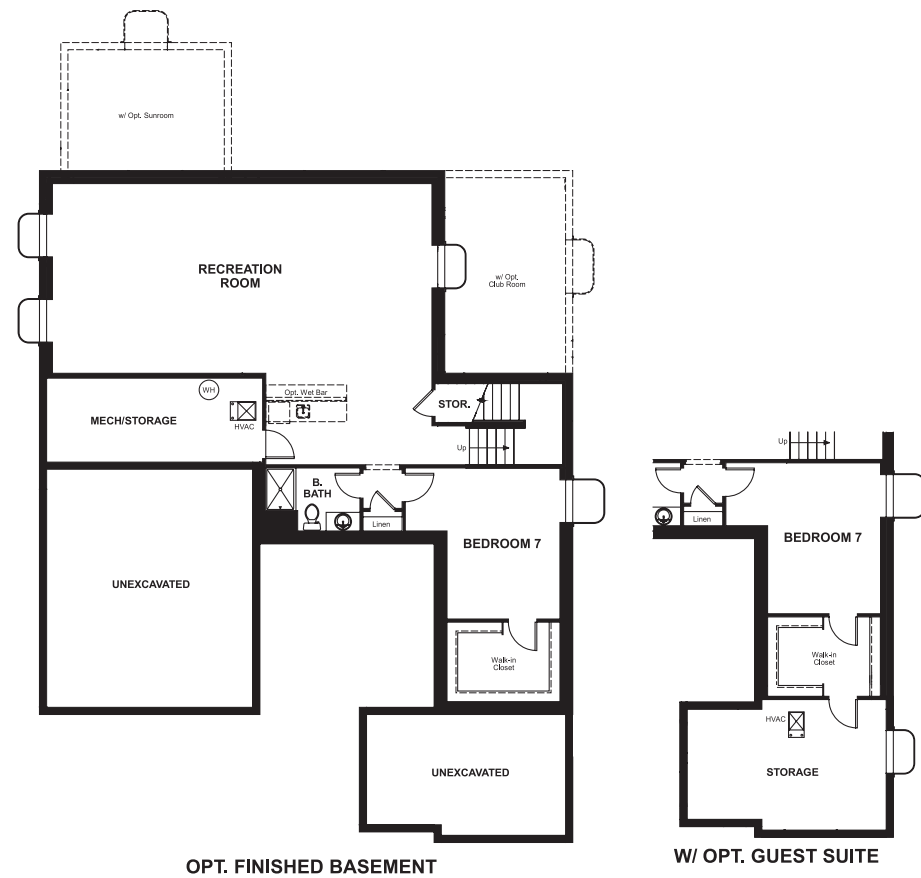


Forest Trace  
**DALLAS**

**Approx. square feet:** 2,900  
**Stories:** 2  
**Bedrooms:** 3 - 7

**Garage:** 3-car  
**Plan Number:** D599

**Floor Plan**  
Basement



Forest Trace  
**DALLAS**

**Approx. square feet:** 2,900  
**Stories:** 2  
**Bedrooms:** 3 - 7  
**Garage:** 3-car  
**Plan Number:** D599

The Dallas plan offers attractive curb appeal with front and side entry garages and a spacious porch. The grand two story entry is flanked by a private study and a formal dining room that leads to a great room with fireplace. The kitchen features a center island, walk-in pantry and generous breakfast nook. Other options include a gourmet professional kitchen, club room and finished basement.



**Elevation A**

**Available elevations:**



**Elevation A**



**Elevation B**



**Elevation C**

**COMMUNITY LOCATION**

South Aurora Parkway and East Euclid Avenue  
Aurora, CO 80211  
303-850-5750

**HOME GALLERY**

8000 East Bellview Avenue, Suite C-12  
Grenwood Village, CO 80111  
888-402-4663



**COMMUNITY LOCATION**

South Aurora Parkway and East Euclid Avenue  
Aurora, CO 80211  
303-850-5750

**HOME GALLERY**

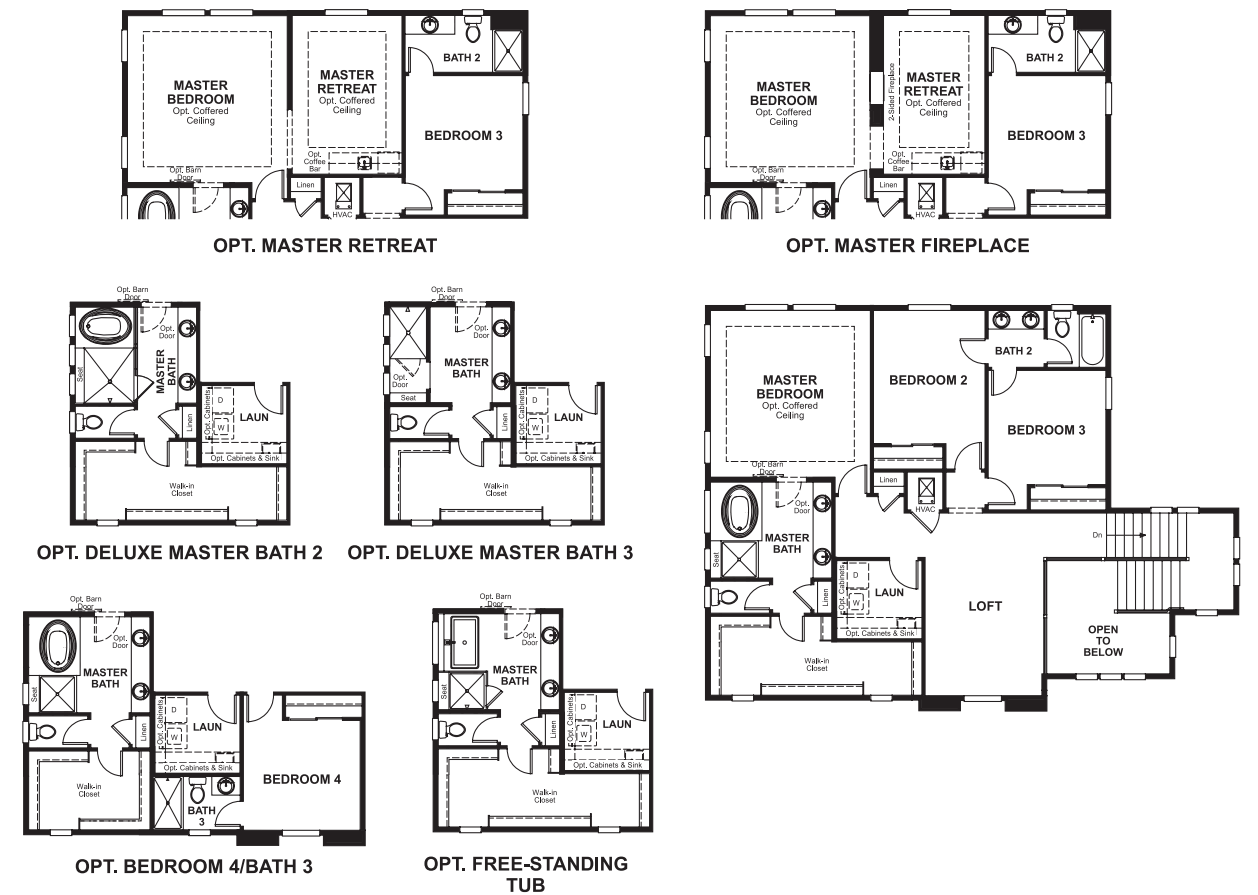
8000 East Bellview Avenue, Suite C-12  
Grenwood Village, CO 80111  
888-402-4663



**Floor Plan**  
Main Floor



**Floor Plan**  
Second Floor



**THIS PLAN'S PROJECTED HERS® INDEX = 56\***  
Projected Rating Based on Plans – Field Confirmation Required

**How does this floor plan rate?**  
Take a look: **100** = Standard new home\* **130** = Typical resale home\*\*  
The lower the number, the better! Refer to the RESNET® HERS index brochure or go to [www.RESNET.us](http://www.RESNET.us) for details.

**What's a HERS® Index?** HERS stands for Home Energy Rating System, a system created by RESNET® to measure home energy efficiency.<sup>^</sup>  
A Projected HERS index or rating is a computer simulation performed prior to construction by a third-party HERS rater using RESNET-accredited rating software, rated feature and specification data derived from home plans, features and specifications, and other data selected or assumed by the rater. The projected HERS index is approximate and is subject to change without notice. Actual results will vary.

\*This information is presented for education purposes only. The HERS index for a confirmed rating will be determined by a third-party HERS rater based on data gathered from on-site observations and, if required, testing of rated features for a home as featured, optioned, located, oriented and/or built.  
+Standard new home is based on the RESNET® Reference Home definition with a HERS® index of 100 (based on the 2006 International Energy Conservation Code).  
++Typical resale home is based on the U.S. Department of Energy definition with a HERS® index of 130.

<sup>^</sup>RESNET® has developed the HERS® index to indicate the comparative efficiencies of homes. It is no guarantee that energy efficiencies will be achieved.