

Eastchurch  
**DARBY**

**Approx. square feet:** 2,850  
**Stories:** 2  
**Bedrooms:** 4 - 7

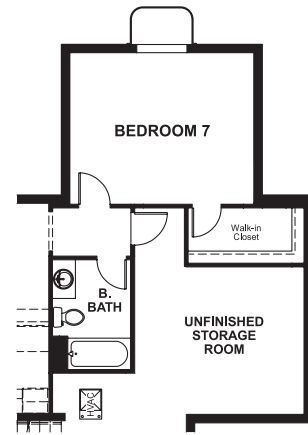
**Garage:** 2- to 3-car  
**Plan Number:** M286

Eastchurch  
**DARBY**

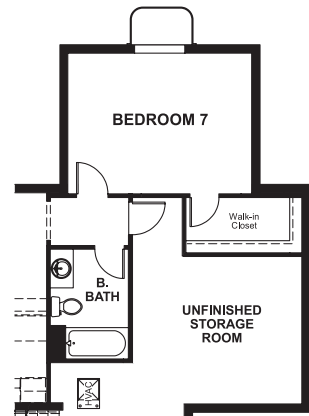
**Approx. square feet:** 2,850  
**Stories:** 2  
**Bedrooms:** 4 - 7  
**Garage:** 2- to 3-car  
**Plan Number:** M286

The Darby's two-story foyer is flanked by formal living and dining rooms. The main floor also offers a study or optional bedroom with bath, a family room and a large kitchen with nook. Upstairs, you'll find a lavish master suite with a sitting room that can be optioned as a fifth bedroom. Also choose to finish the basement with a bedroom and bath.

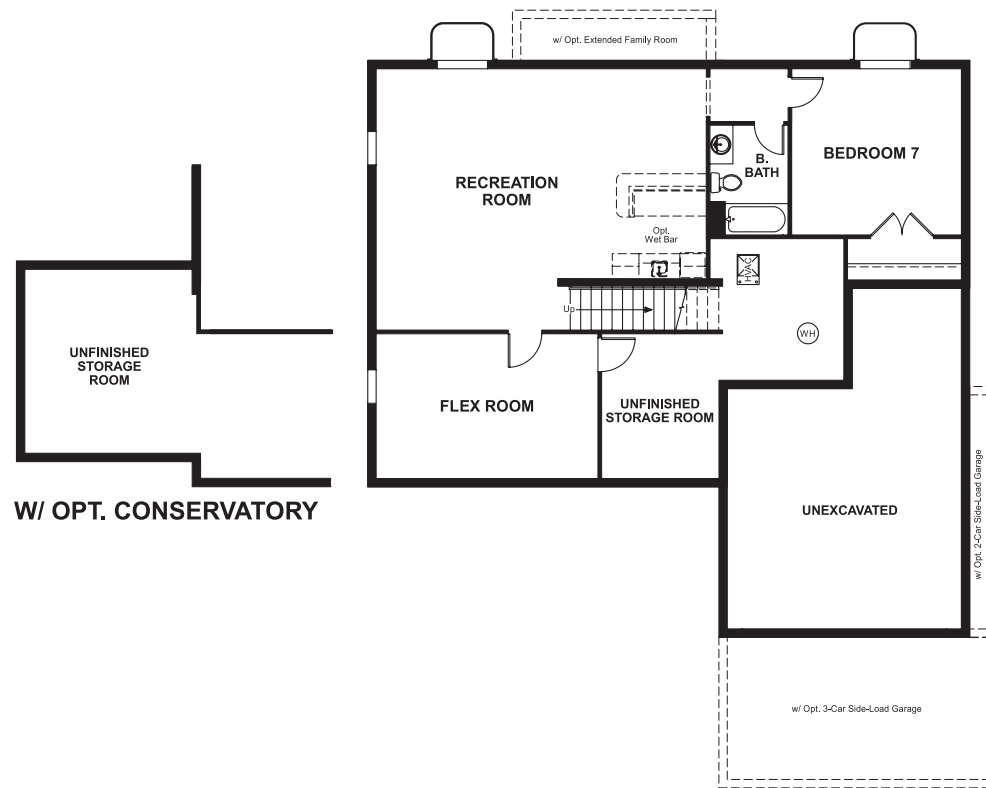
**Floor Plan**  
Basement



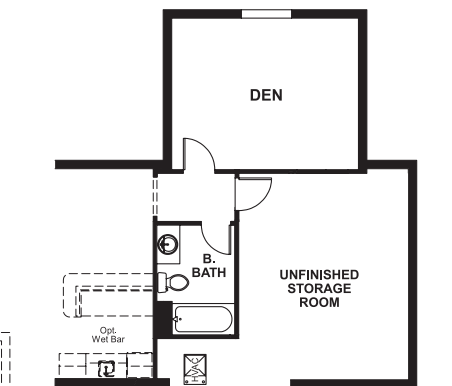
W/ OPT. SUNROOM



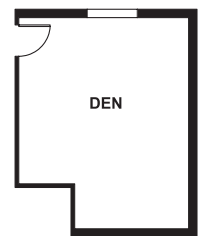
W/ OPT. SUNROOM 2



OPT. FINISHED BASEMENT



OPT. BASEMENT DEN W/ SUNROOM



OPT. BASEMENT DEN



Elevation A

Available elevations:



Elevation A



Elevation B



Elevation C



Elevation D



Elevation E



Elevation F

**COMMUNITY LOCATION**  
725 Holden Road  
Frederick, MD 21701  
410-312-2829

**HOME GALLERY**  
6210 Old Dobbin Lane, Suite 190  
Columbia, MD 20145  
888-772-4545



**COMMUNITY LOCATION**  
725 Holden Road  
Frederick, MD 21701  
410-312-2829

**HOME GALLERY**  
6210 Old Dobbin Lane, Suite 190  
Columbia, MD 20145  
888-772-4545

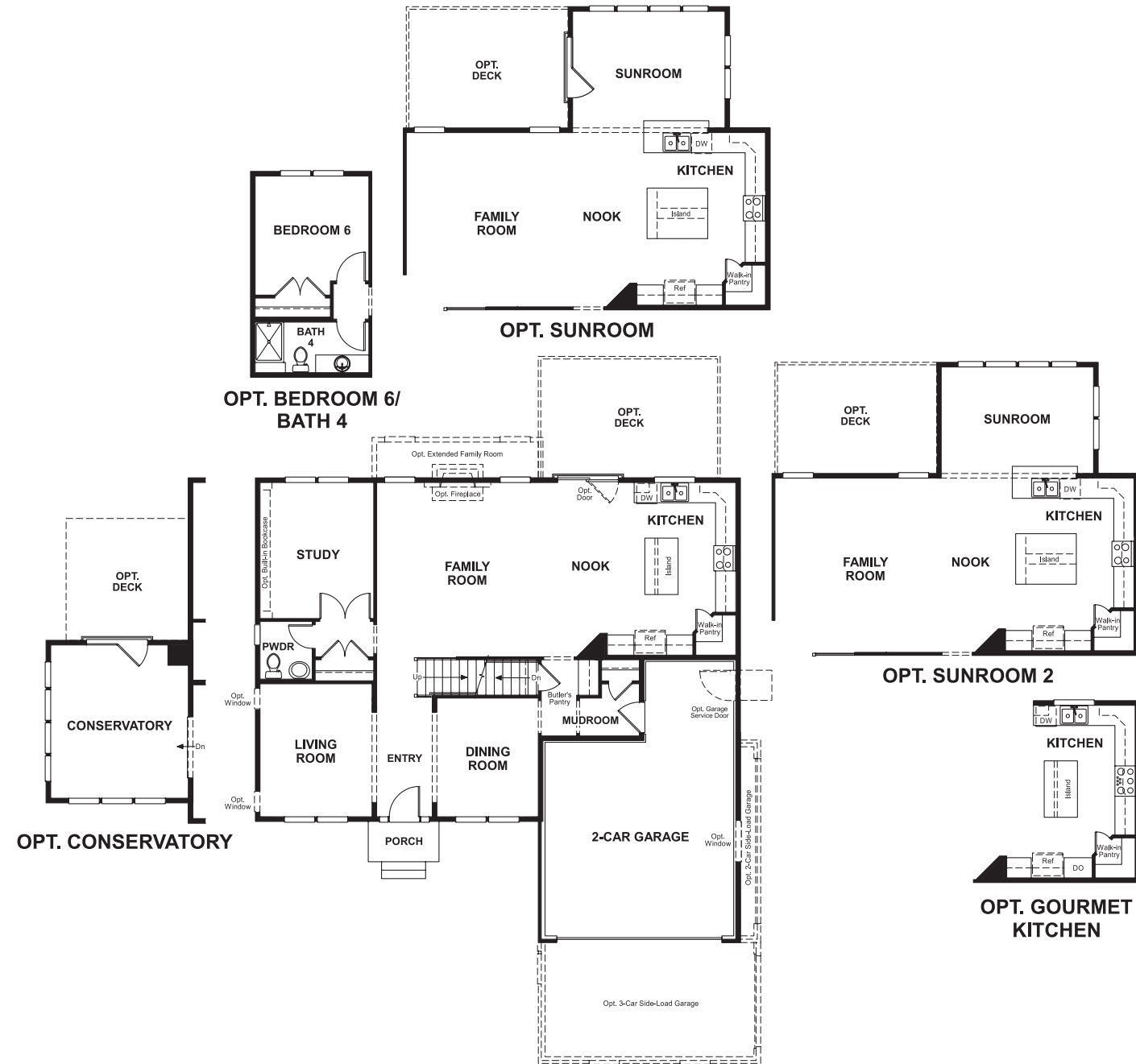


Eastchurch  
**DARBY**

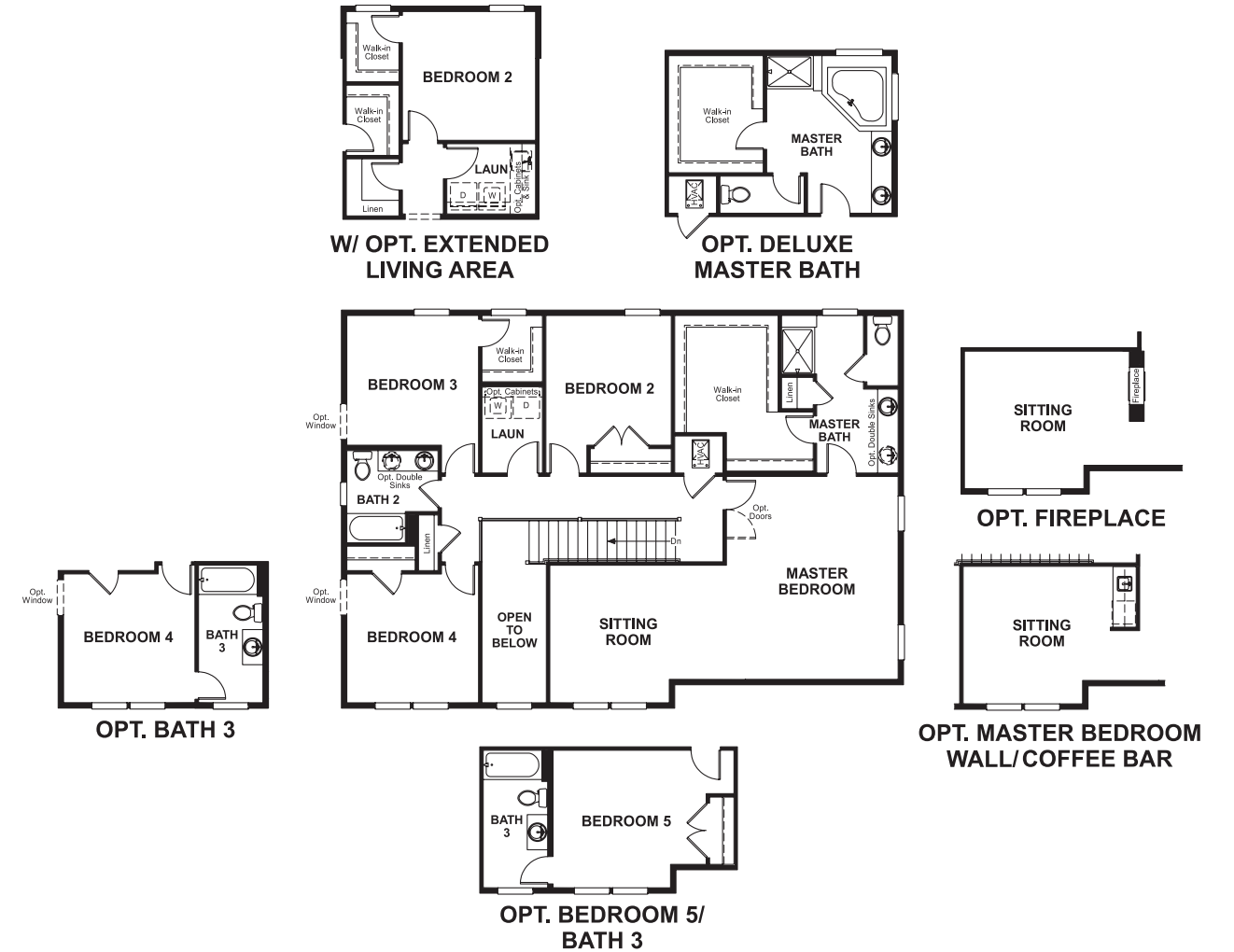
Approx. square feet: 2,850  
Stories: 2  
Bedrooms: 4 - 7

Garage: 2- to 3-car  
Plan Number: M286

**Floor Plan**  
Main Floor



**Floor Plan**  
Second Floor



**THIS PLAN'S PROJECTED  
HERS® INDEX = 54\***  
Projected Rating Based on Plans – Field Confirmation Required

**How does this floor plan rate?**  
Take a look: **100** = Standard new home\* **130** = Typical resale home\*\*  
The lower the number, the better! Refer to the RESNET® HERS index brochure or go to [www.RESNET.us](http://www.RESNET.us) for details.

**What's a HERS® Index?** HERS stands for Home Energy Rating System, a system created by RESNET® to measure home energy efficiency. A Projected HERS index or rating is a computer simulation performed prior to construction by a third-party HERS rater using RESNET-accredited rating software, rated feature and specification data derived from home plans, features and specifications, and other data selected or assumed by the rater. The projected HERS index is approximate and is subject to change without notice. Actual results will vary.

\*This information is presented for education purposes only. The HERS index for a confirmed rating will be determined by a third-party HERS rater based on data gathered from on-site observations and, if required, testing of rated features for a home as featured, optioned, located, oriented and/or built.  
+Standard new home is based on the RESNET® Reference Home definition with a HERS® index of 100 (based on the 2006 International Energy Conservation Code).  
\*\*Typical resale home is based on the U.S. Department of Energy definition with a HERS® index of 130.

^RESNET® has developed the HERS® index to indicate the comparative efficiencies of homes. It is no guarantee that energy efficiencies will be achieved.