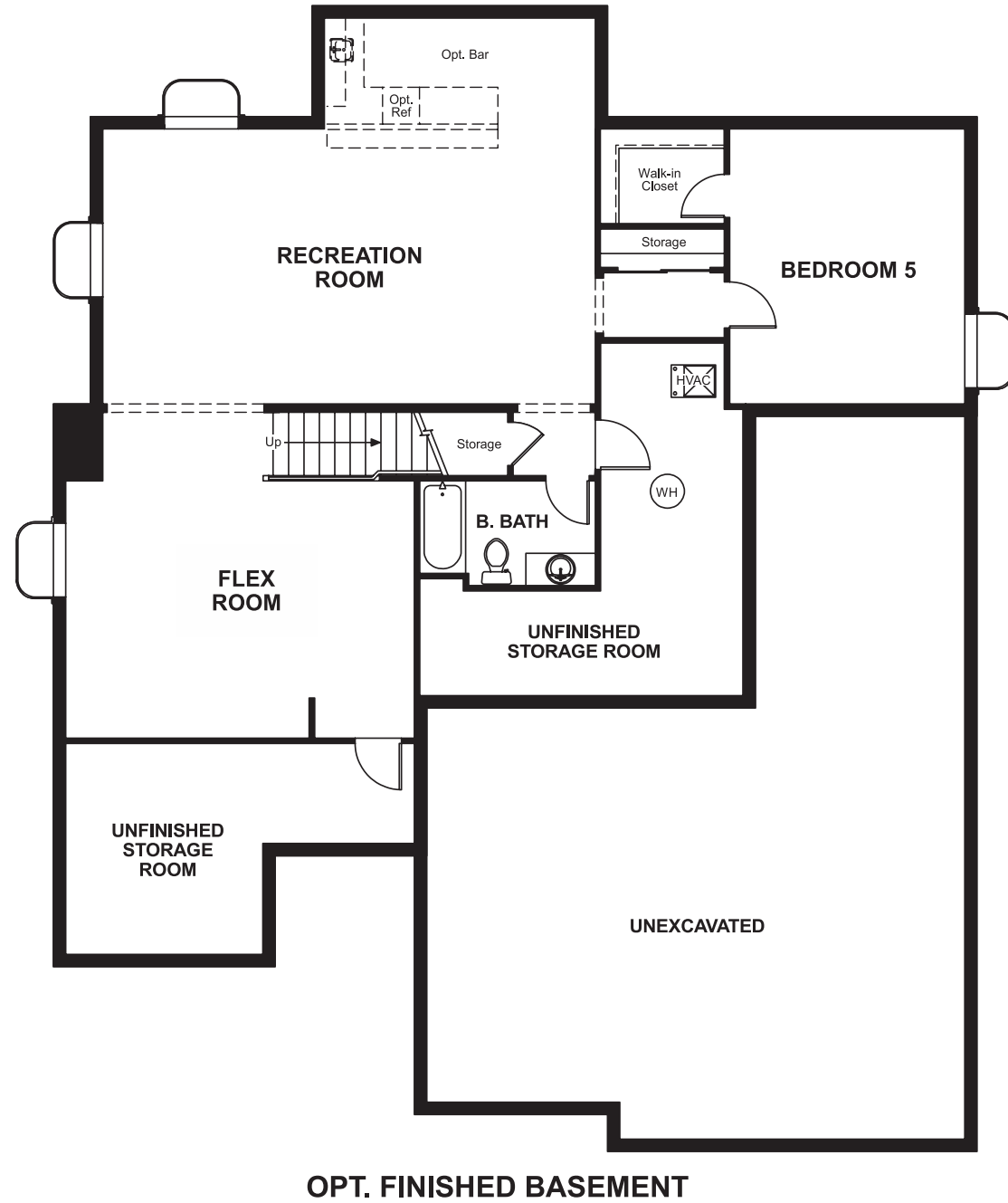


Colliers Hill
DAWSON

Approx. square feet: 3,150
Stories: 2
Bedrooms: 4-5

Garage: 4-car
Plan Number: D317

Floor Plan
Basement



COMMUNITY LOCATION
County Road 5 & Weld County Road 8
Erie, CO 80504
303-850-5750

HOME GALLERY
8000 East Bellview Avenue, Suite B-90
Greenwood Village, CO 80111
303-850-5750



The Sanctuary at Colliers Hill
DAWSON

Approx. square feet: 3,150
Stories: 2
Bedrooms: 4-5
Garage: 4-car
Plan Number: D317



Elevation A

The Dawson is a beautiful two-story home that greets you with a dramatic staircase and two-story living room. Another highlight includes the main-floor study, a perfect spot for peace and quiet. The gourmet kitchen opens to a sunny breakfast nook with bay window. Upstairs, a deluxe master bath completes the master suite. Spacious great room with fireplace.

Available elevations:



Elevation A



Elevation B



Elevation C



Elevation D



Elevation E



Elevation F

COMMUNITY LOCATION
County Road 5 & Weld County Road 8
Erie, CO 80504
303-850-5750

HOME GALLERY
8000 East Bellview Avenue, Suite B-90
Greenwood Village, CO 80111
303-850-5750

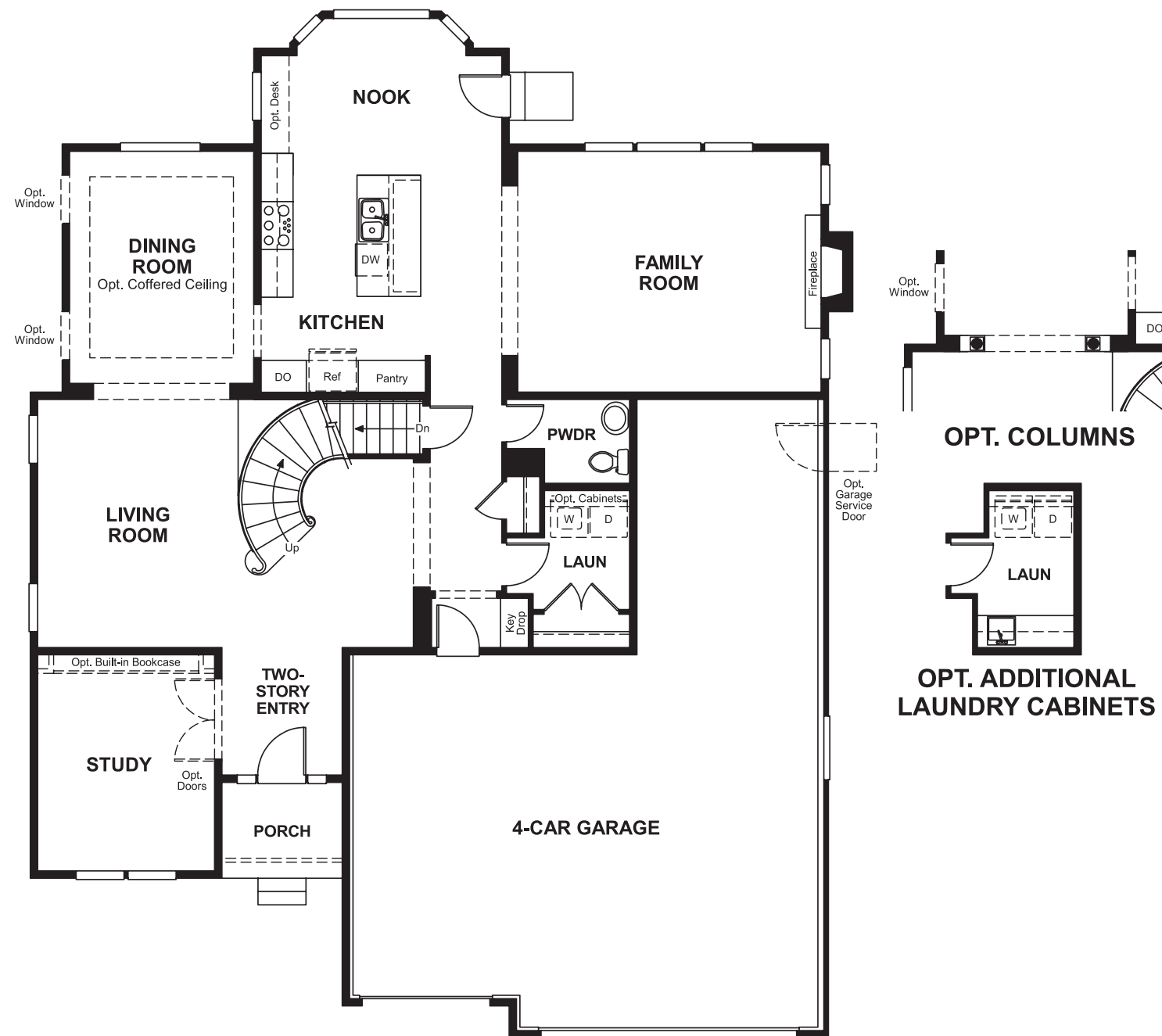


Colliers Hill
DAWSON

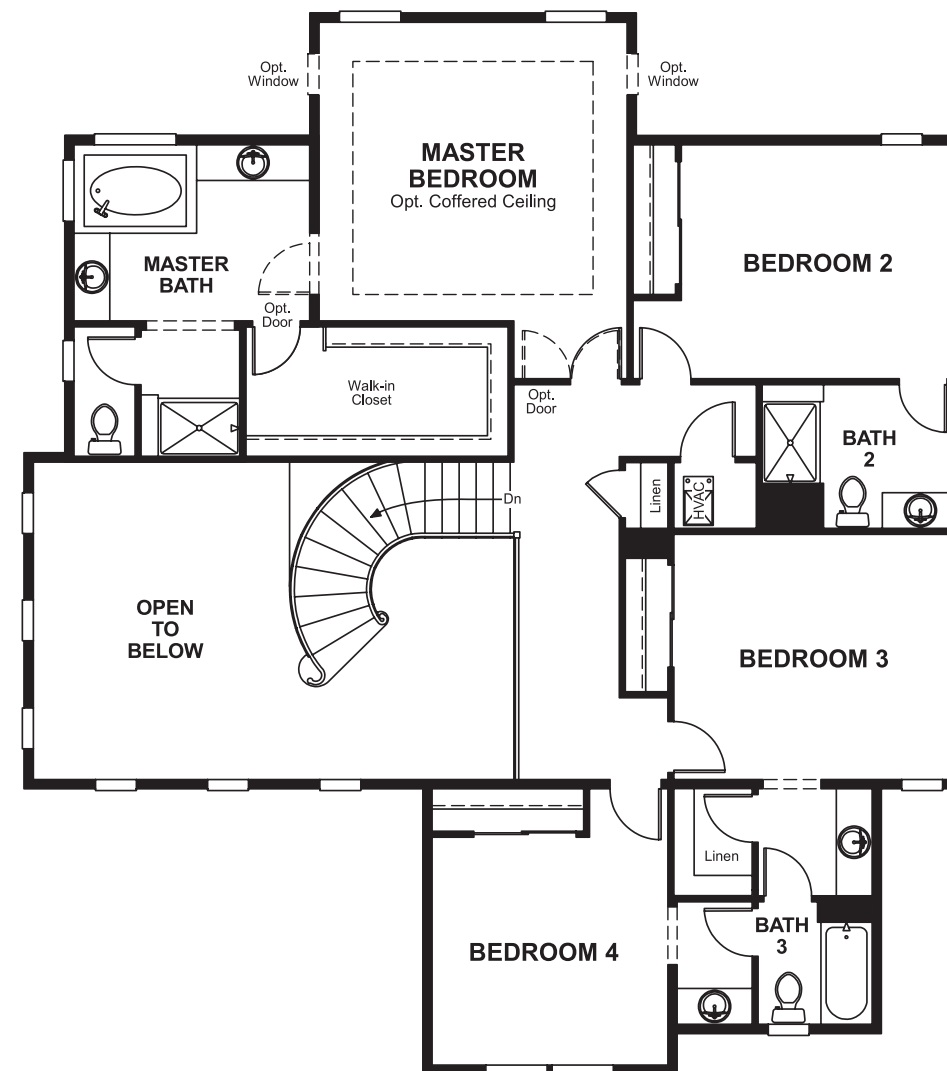
Approx. square feet: 3,150
Stories: 2
Bedrooms: 4-5

Garage: 4-car
Plan Number: D317

Floor Plan
First Floor



Floor Plan
Second Floor



**THIS PLAN'S PROJECTED
HERS® INDEX = 59***
Projected Rating Based on Plans – Field Confirmation Required

How does this floor plan rate?
Take a look: **100** = Standard new home* **130** = Typical resale home**
The lower the number, the better! Refer to the RESNET® HERS index brochure or go to www.RESNET.us for details.

What's a HERS® Index? HERS stands for Home Energy Rating System, a system created by RESNET® to measure home energy efficiency.[^]
A Projected HERS index or rating is a computer simulation performed prior to construction by a third-party HERS rater using RESNET-accredited rating software, rated feature and specification data derived from home plans, features and specifications, and other data selected or assumed by the rater. The projected HERS index is approximate and is subject to change without notice. Actual results will vary.

*This information is presented for education purposes only. The HERS index for a confirmed rating will be determined by a third-party HERS rater based on data gathered from on-site observations and, if required, testing of rated features for a home as featured, optioned, located, oriented and/or built.
+Standard new home is based on the RESNET® Reference Home definition with a HERS® index of 100 (based on the 2006 International Energy Conservation Code).
++Typical resale home is based on the U.S. Department of Energy definition with a HERS® index of 130.

[^]RESNET® has developed the HERS® index to indicate the comparative efficiencies of homes. It is no guarantee that energy efficiencies will be achieved.