

DAYTON



Elevation A

Approx. square feet: 3,950

Stories: 2

Bedrooms: 5 - 6

Garage: 3-car

Plan Number: J601

The Dayton plan was designed for entertaining, with a formal dining room, a spacious great room and a gourmet kitchen with a center island and optional professional features. Other main-floor highlights include a study, a convenient bedroom and a 3-car garage. Upstairs, you'll find a versatile loft and a sophisticated master suite with a deluxe bath and dual walk in closets. Personalization options include a covered patio and a master retreat with a fireplace.

Available elevations:



Elevation A



Elevation B



Elevation C - shown with opt. stone



Elevation D



Elevation E



Elevation F

HOME GALLERY
1560 Wells Road, Building A, Suite 105
Orange Park, FL 32073
1-800-221-3014



HOME GALLERY
1560 Wells Road, Building A, Suite 105
Orange Park, FL 32073
1-800-221-3014

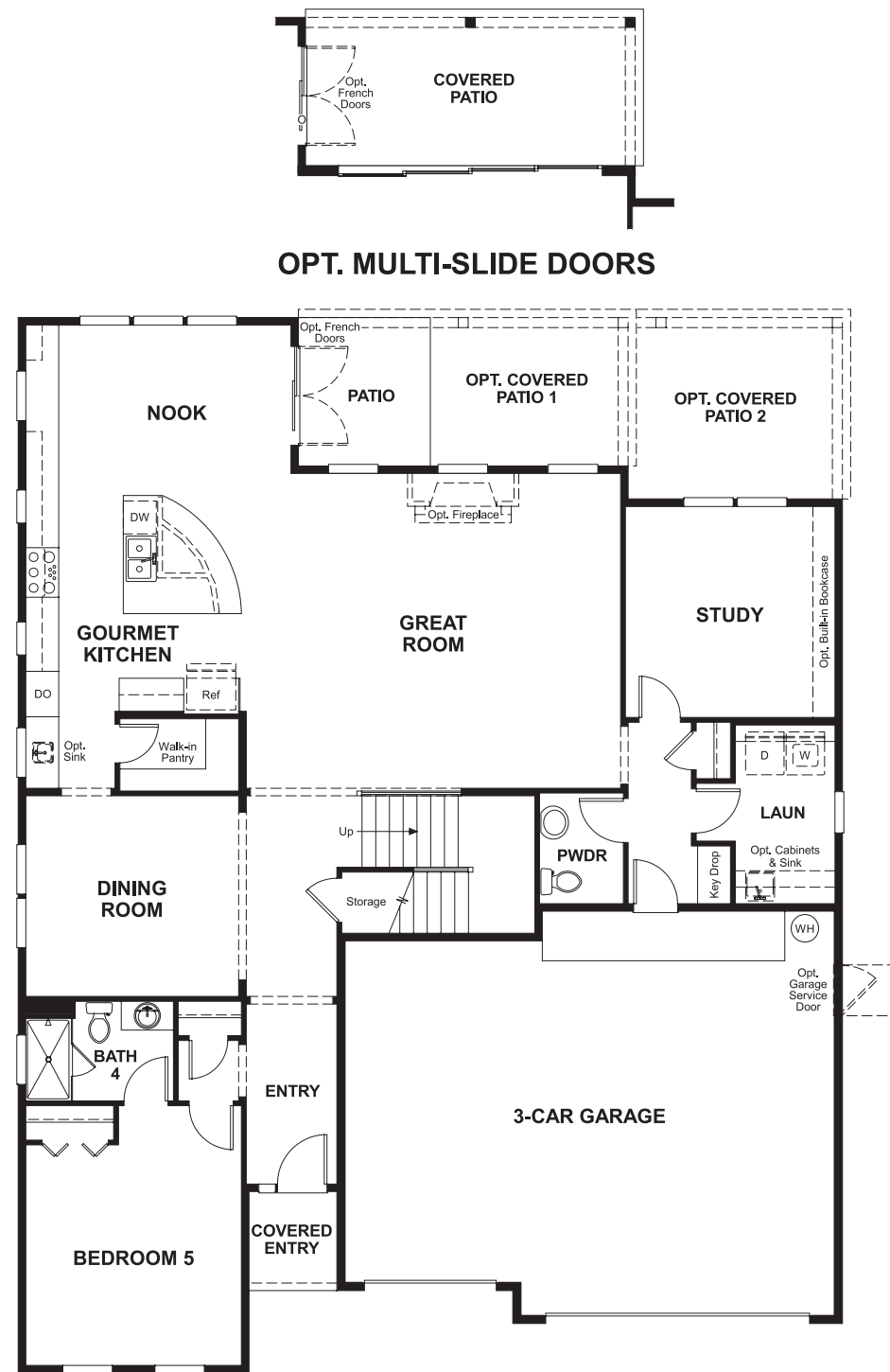


DAYTON

Approx. square feet: 3,950
Stories: 2
Bedrooms: 5 - 6

Garage: 3-car
Plan Number: J601

Floor Plan
Main Floor



Floor Plan
Second Floor



THIS PLAN'S PROJECTED HERS® INDEX = 63*
Projected Rating Based on Plans – Field Confirmation Required

How does this floor plan rate?
Take a look: **100** = Standard new home* **130** = Typical resale home**
The lower the number, the better! Refer to the RESNET® HERS index brochure or go to www.RESNET.us for details.

What's a HERS® Index? HERS stands for Home Energy Rating System, a system created by RESNET® to measure home energy efficiency.[^]
A Projected HERS index or rating is a computer simulation performed prior to construction by a third-party HERS rater using RESNET-accredited rating software, rated feature and specification data derived from home plans, features and specifications, and other data selected or assumed by the rater. The projected HERS index is approximate and is subject to change without notice. Actual results will vary.

*This information is presented for education purposes only. The HERS index for a confirmed rating will be determined by a third-party HERS rater based on data gathered from on-site observations and, if required, testing of rated features for a home as featured, optioned, located, oriented and/or built.
+Standard new home is based on the RESNET® Reference Home definition with a HERS® index of 100 (based on the 2006 International Energy Conservation Code).
++Typical resale home is based on the U.S. Department of Energy definition with a HERS® index of 130.

^RESNET® has developed the HERS® index to indicate the comparative efficiencies of homes. It is no guarantee that energy efficiencies will be achieved.