

Corinthia at Kavala Ranch
DENISE



Elevation A

Approx. square feet: 2,400
Stories: 1
Bedrooms: 3
Garage: 2-car
Plan Number: N235

The ranch-style Denise plan greets guests with a charming courtyard entry. Once inside, you'll find an expansive great room, a gourmet kitchen with a center island and walk-in pantry and an elegant master suite with a deluxe bath and generous walk-in closet. The teen room and private study can be optioned as additional bedrooms, and a second master suite is available.

Available elevations:



Elevation A



Elevation B



Elevation C

COMMUNITY LOCATION
 2017 Azalea Parkway
 Rancho Cordova, CA 95742
 800-852-9714

HOME GALLERY
 One Harbor Center, Suite 150
 Suisun City, CA 94533
 707-416-2800

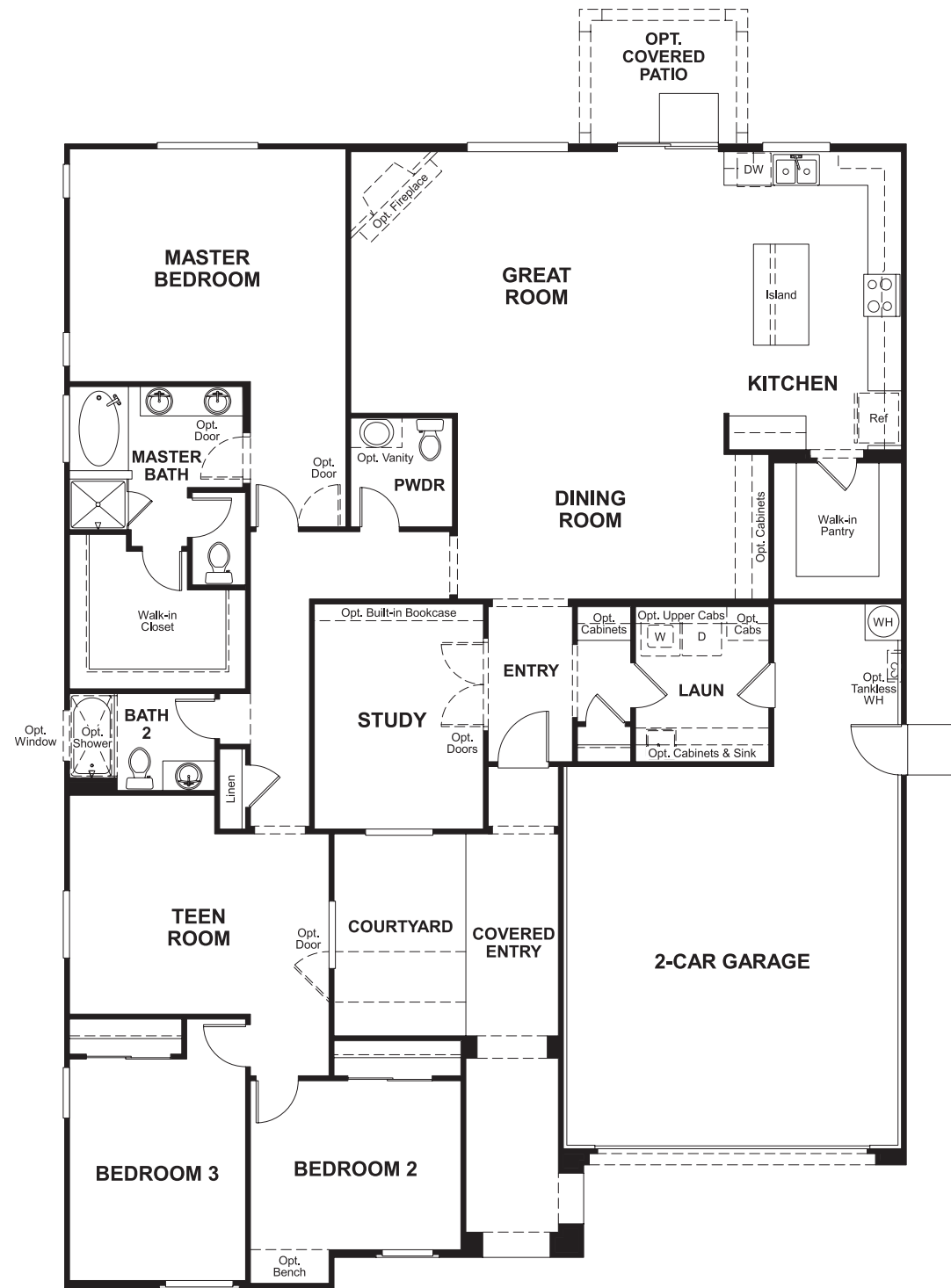


COMMUNITY LOCATION
 2017 Azalea Parkway
 Rancho Cordova, CA 95742
 800-852-9714

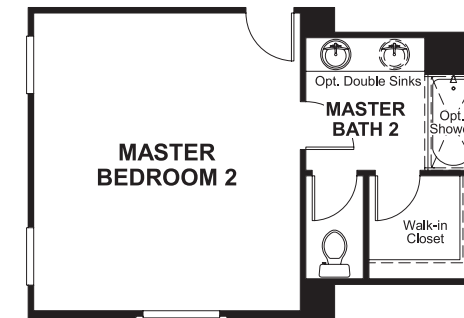
HOME GALLERY
 One Harbor Center, Suite 150
 Suisun City, CA 94533
 707-416-2800



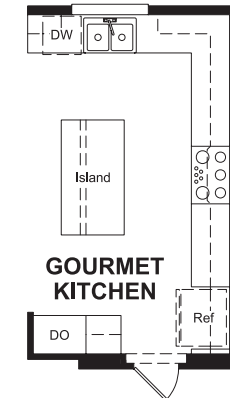
Floor Plan
Main Floor



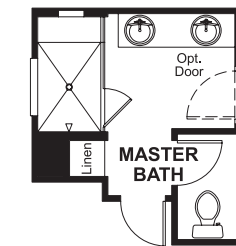
Floor Plan
Main Floor Options



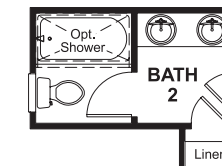
OPT. MASTER BEDROOM 2



OPT. GOURMET KITCHEN



OPT. DELUXE MASTER BATH



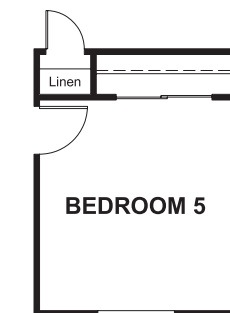
OPT. DELUXE BATH 2



OPT. BEDROOM 4



OPT. BATH 3



OPT. BEDROOM 5

THIS PLAN'S PROJECTED HERS® INDEX = 74*
Projected Rating Based on Plans – Field Confirmation Required

How does this floor plan rate?
Take a look: **100** = Standard new home* **130** = Typical resale home**
The lower the number, the better! Refer to the RESNET® HERS index brochure or go to www.RESNET.us for details.

What's a HERS® Index? HERS stands for Home Energy Rating System, a system created by RESNET® to measure home energy efficiency. A Projected HERS index or rating is a computer simulation performed prior to construction by a third-party HERS rater using RESNET-accredited rating software, rated feature and specification data derived from home plans, features and specifications, and other data selected or assumed by the rater. The projected HERS index is approximate and is subject to change without notice. Actual results will vary.

*This information is presented for education purposes only. The HERS index for a confirmed rating will be determined by a third-party HERS rater based on data gathered from on-site observations and, if required, testing of rated features for a home as featured, optioned, located, oriented and/or built.
+Standard new home is based on the RESNET® Reference Home definition with a HERS® index of 100 (based on the 2006 International Energy Conservation Code).
++Typical resale home is based on the U.S. Department of Energy definition with a HERS® index of 130.

^RESNET® has developed the HERS® index to indicate the comparative efficiencies of homes. It is no guarantee that energy efficiencies will be achieved.