

Silver Creek
DESIREE



Elevation A

Approx. square feet: 2,850

Stories: 2

Bedrooms: 4

Garage: 2-car

Plan Number: L28P

When you step inside the impressive Desiree plan, you'll immediately note the dramatic two-story entry and adjacent formal dining room. The main floor also boasts a private study, a spacious great room with an optional fireplace, a gourmet kitchen and a master suite with a deluxe bath and immense walk-in closet. Upstairs, you'll find three additional bedrooms and a full bath. Personalization options include an upstairs master suite or loft and a covered patio.

Available elevations:



Elevation A



Elevation B



Elevation C

COMMUNITY LOCATION

Durango Drive and Ford Avenue
Las Vegas, NV 89113
702-638-4440

HOME GALLERY

7770 South Dean Martin Drive, Suite 308
Las Vegas, NV 89139
702-617-8400



COMMUNITY LOCATION

Durango Drive and Ford Avenue
Las Vegas, NV 89113
702-638-4440

HOME GALLERY

7770 South Dean Martin Drive, Suite 308
Las Vegas, NV 89139
702-617-8400

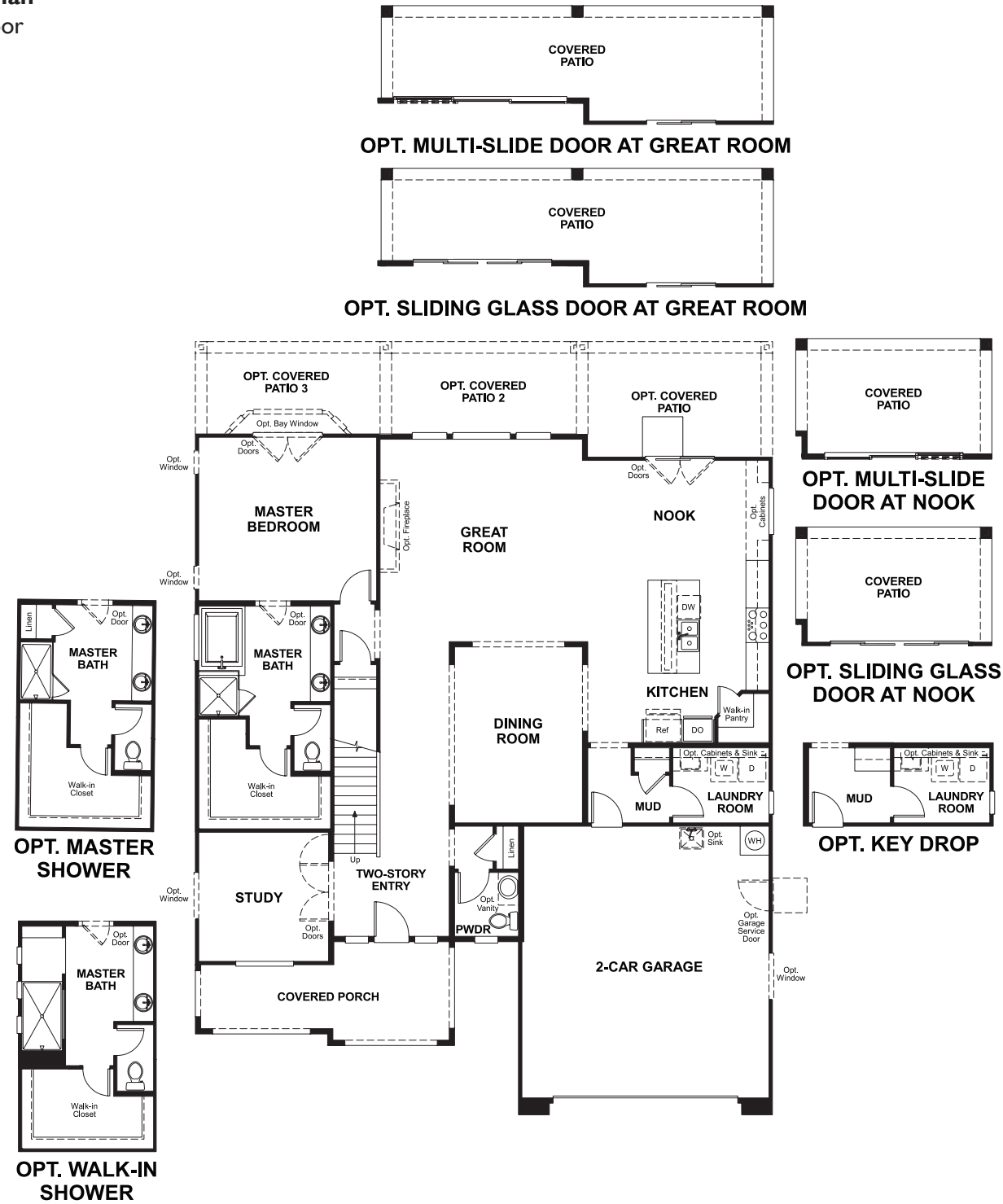


Silver Creek
DESIREE

Approx. square feet: 2,850
Stories: 2
Bedrooms: 4

Garage: 2-car
Plan Number: L28P

Floor Plan
Main Floor



Floor Plan
Second Floor

