

Corinthia at Kavala Ranch  
**DILLON**



**Elevation A - Spanish**

**Approx. square feet:** 3,000  
**Stories:** 2  
**Bedrooms:** 4  
**Garage:** 3-car tandem  
**Plan Number:** N30D

A soaring two-story foyer and elegant dining room welcome you to the Dillon. A convenient butler's pantry leads from the dining room to a large kitchen and nook. The expansive two-story great room offers an ideal area for entertaining or family gatherings. Personalize your home with a loft, gourmet kitchen or additional bedroom.

**Available elevations:**



**Elevation A - Spanish**



**Elevation B - Italian**



**Elevation C - French Country**

**COMMUNITY LOCATION**

5017 Azalea Parkway  
Rancho Cordova, CA 95742  
800-852-9714

**HOME GALLERY**

One Harbor Center, Suite 150  
Suisun City, CA 94533  
707-416-2800



**COMMUNITY LOCATION**

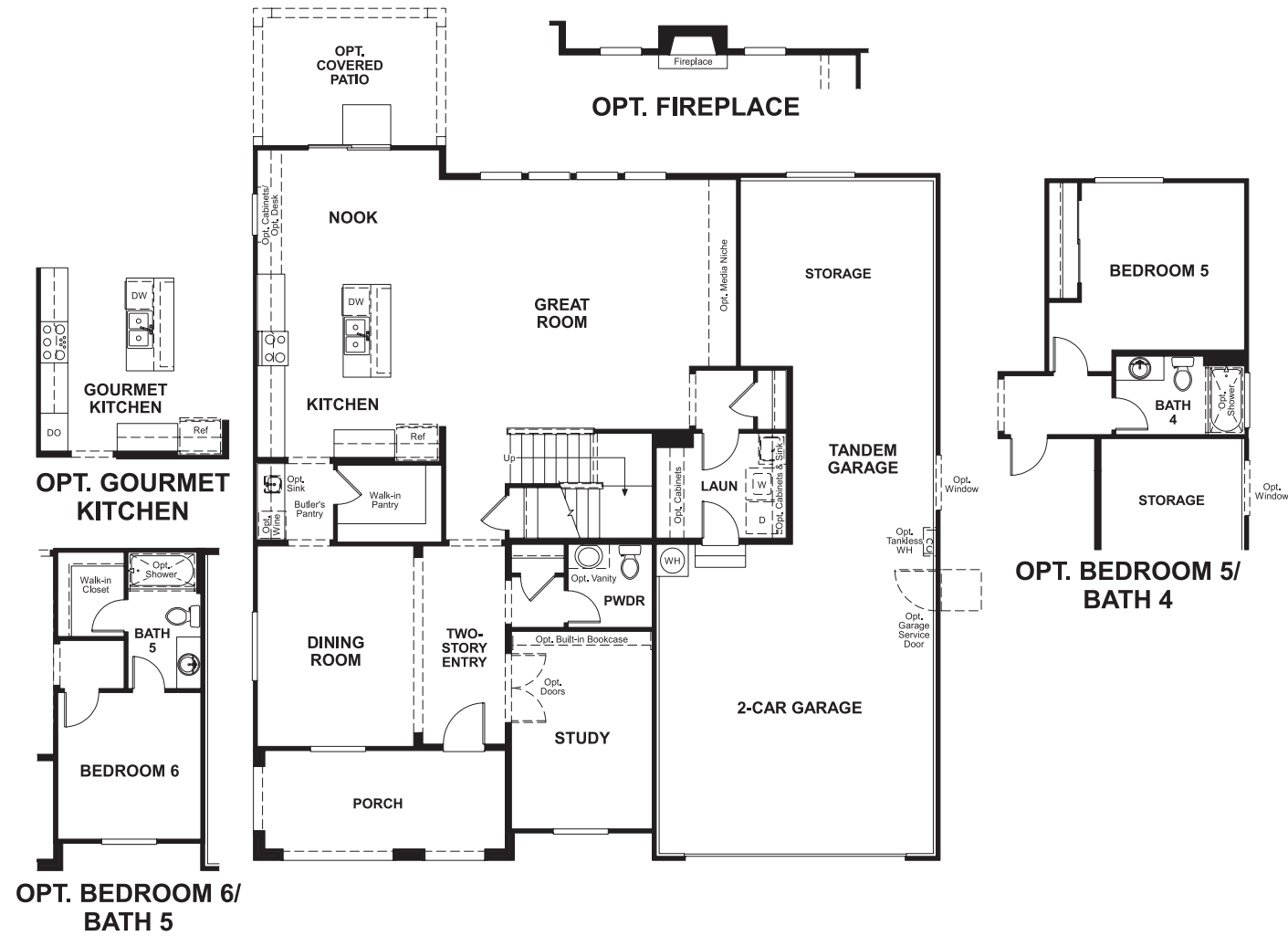
5017 Azalea Parkway  
Rancho Cordova, CA 95742  
800-852-9714

**HOME GALLERY**

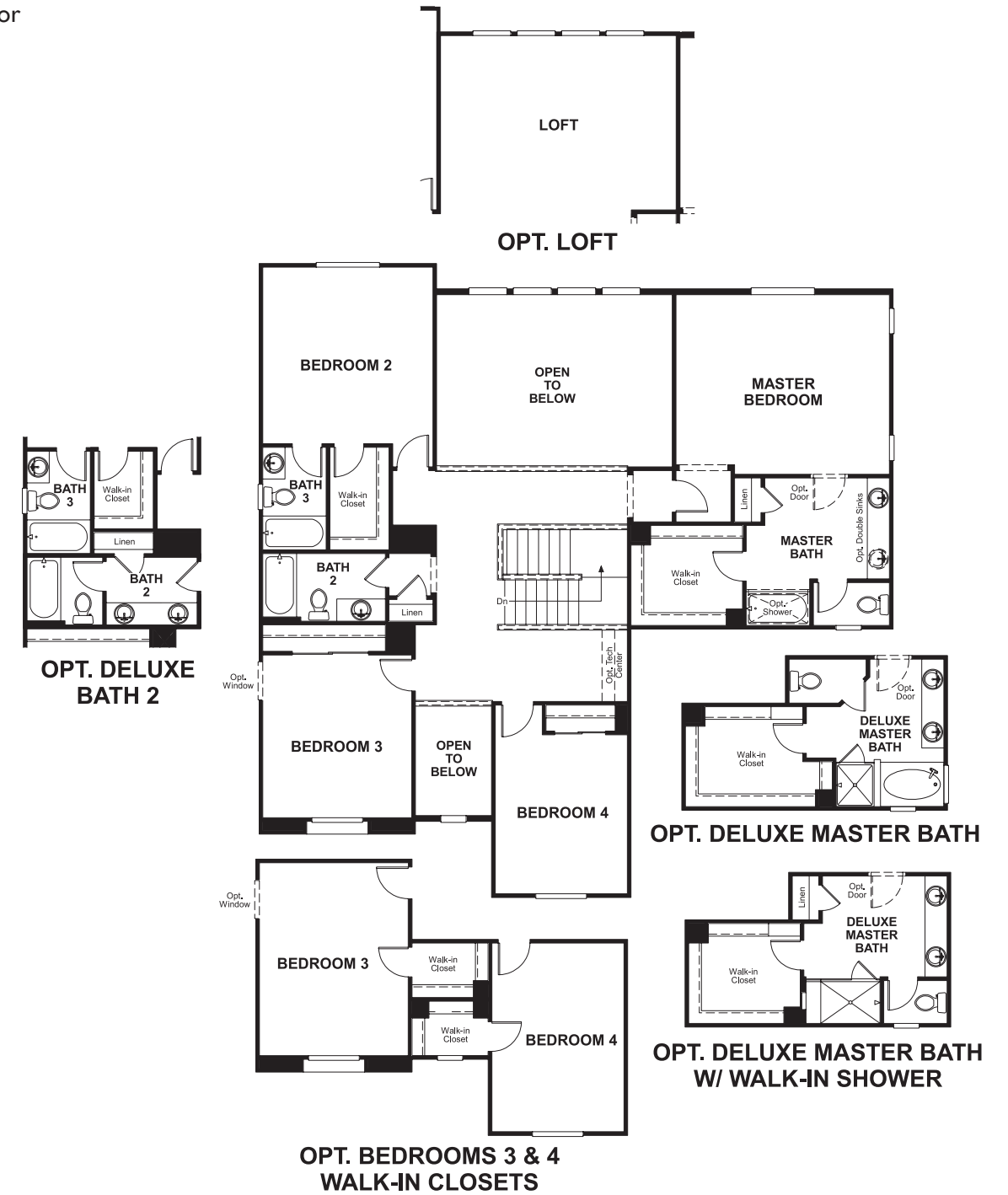
One Harbor Center, Suite 150  
Suisun City, CA 94533  
707-416-2800



**Floor Plan**  
Main Floor



**Floor Plan**  
Second Floor



**THIS PLAN'S PROJECTED HERS® INDEX = 72\***  
Projected Rating Based on Plans – Field Confirmation Required

**How does this floor plan rate?**  
Take a look: **100** = Standard new home\* **130** = Typical resale home\*\*  
The lower the number, the better! Refer to the RESNET® HERS index brochure or go to [www.RESNET.us](http://www.RESNET.us) for details.

**What's a HERS® Index?** HERS stands for Home Energy Rating System, a system created by RESNET® to measure home energy efficiency.<sup>^</sup>  
A Projected HERS index or rating is a computer simulation performed prior to construction by a third-party HERS rater using RESNET-accredited rating software, rated feature and specification data derived from home plans, features and specifications, and other data selected or assumed by the rater. The projected HERS index is approximate and is subject to change without notice. Actual results will vary.

\*This information is presented for education purposes only. The HERS index for a confirmed rating will be determined by a third-party HERS rater based on data gathered from on-site observations and, if required, testing of rated features for a home as featured, optioned, located, oriented and/or built.  
+Standard new home is based on the RESNET® Reference Home definition with a HERS® index of 100 (based on the 2006 International Energy Conservation Code).  
++Typical resale home is based on the U.S. Department of Energy definition with a HERS® index of 130.

<sup>^</sup>RESNET® has developed the HERS® index to indicate the comparative efficiencies of homes. It is no guarantee that energy efficiencies will be achieved.