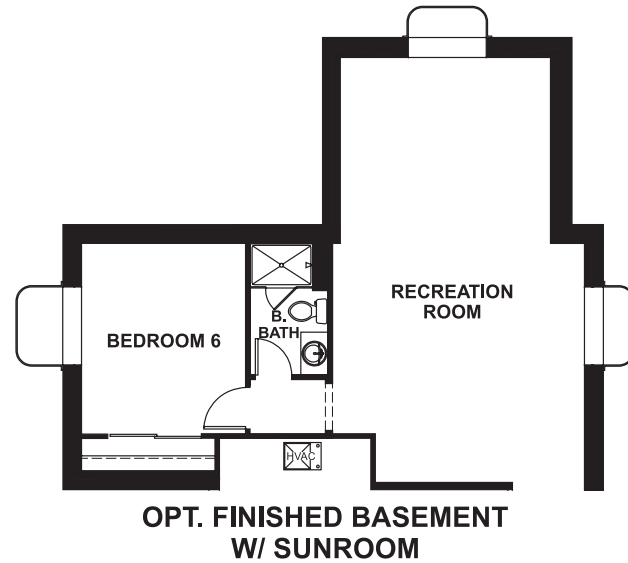


Crystal Valley Ranch
FLEMING

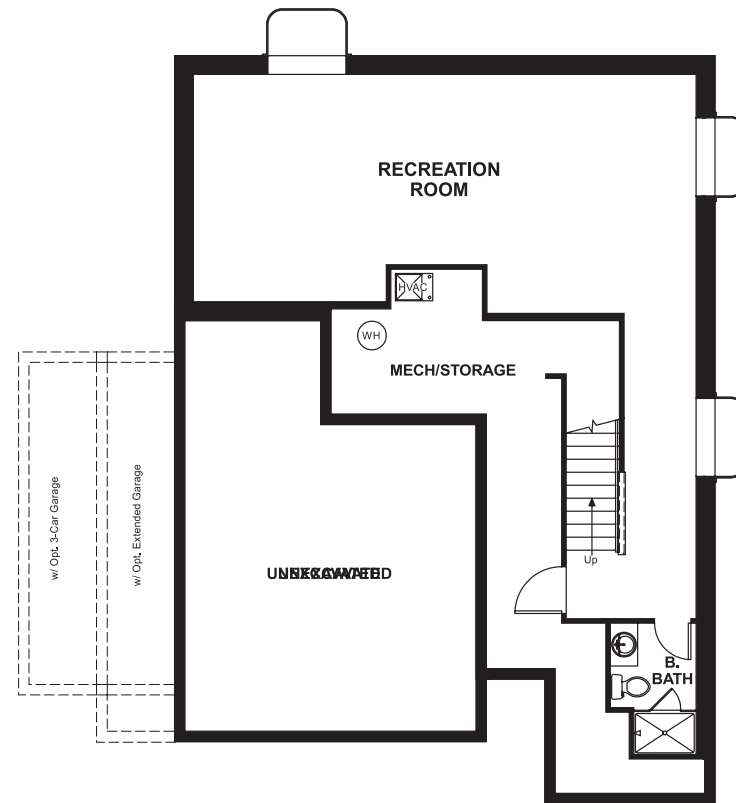
Approx. square feet: 2,150
Stories: 2
Bedrooms: 3 - 6

Garage: 2- to 3-car
Plan Number: D597

Floor Plan
Basement



**OPT. FINISHED BASEMENT
W/ SUNROOM**



COMMUNITY LOCATION
5641 Echo Hollow Street
Castle Rock, CO 80104
303-620-5425

HOME GALLERY
8000 East Belleview Avenue, Suite C-12
Greenwood Village, CO 80111
888-402-4663



Crystal Valley Ranch
FLEMING

Approx. square feet: 2,150
Stories: 2
Bedrooms: 3 - 6
Garage: 2- to 3-car
Plan Number: D597

The main floor of the Fleming plan was designed for entertaining, with open great and dining rooms and a spacious kitchen with a center island, walk-in pantry and optional gourmet features. You'll also appreciate the quiet study. Upstairs offers an inviting loft, which can be converted to an extra bedroom, and an elegant master suite. Customize this plan with options including a deluxe master bath, sunroom and finished basement.



Elevation A

Available elevations:



Elevation A



Elevation B



Elevation C

COMMUNITY LOCATION
5641 Echo Hollow Street
Castle Rock, CO 80104
303-620-5425

HOME GALLERY
8000 East Belleview Avenue, Suite C-12
Greenwood Village, CO 80111
888-402-4663

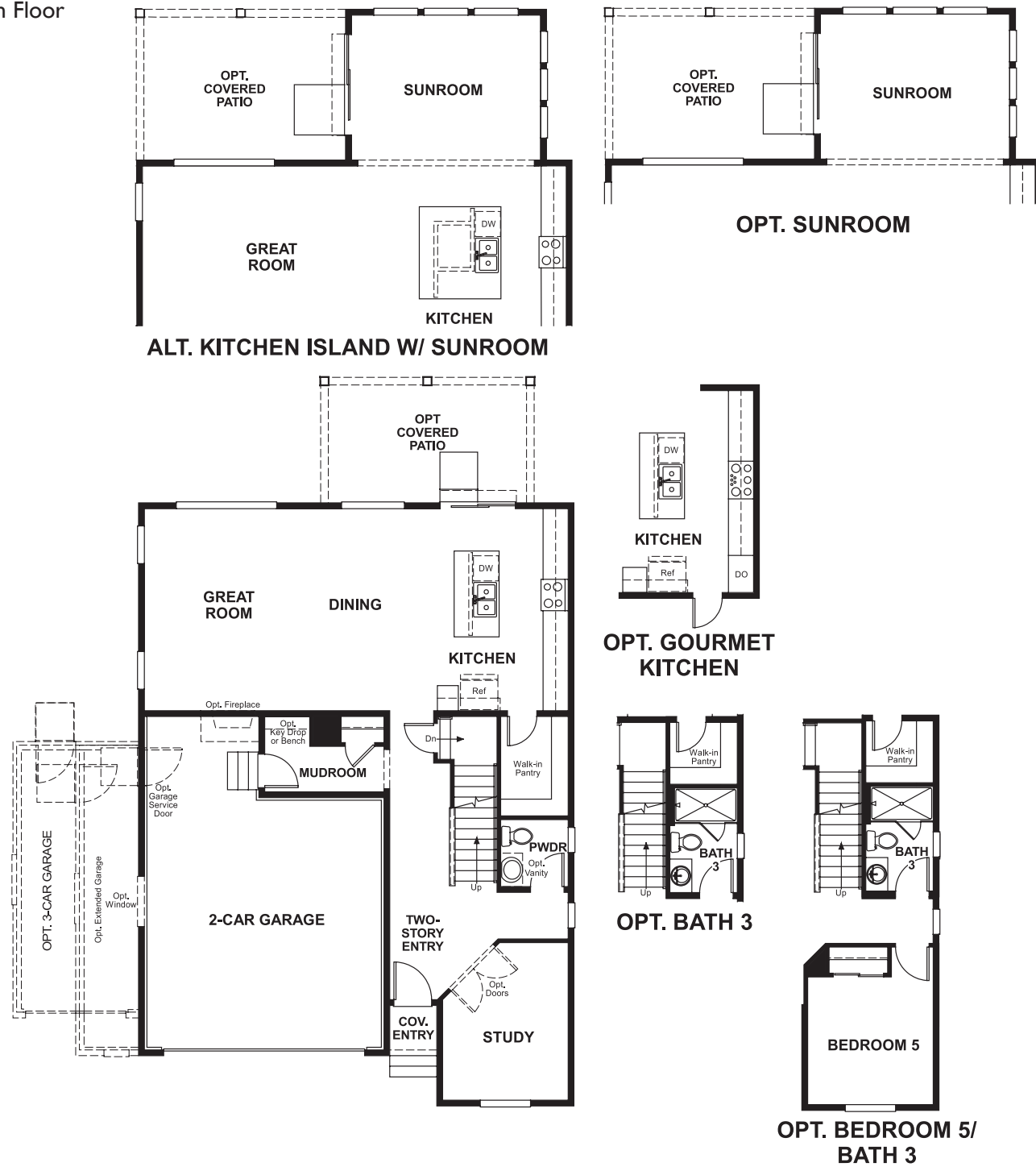


Crystal Valley Ranch
FLEMING

Approx. square feet: 2,150
Stories: 2
Bedrooms: 3 - 6

Garage: 2- to 3-car
Plan Number: D597

Floor Plan
Main Floor



Floor Plan
Second Floor



THIS PLAN'S PROJECTED HERS® INDEX = 54*
Projected Rating Based on Plans – Field Confirmation Required

How does this floor plan rate?
Take a look: **100** = Standard new home* **130** = Typical resale home**
The lower the number, the better! Refer to the RESNET® HERS index brochure or go to www.RESNET.us for details.

What's a HERS® Index? HERS stands for Home Energy Rating System, a system created by RESNET® to measure home energy efficiency. A Projected HERS index or rating is a computer simulation performed prior to construction by a third-party HERS rater using RESNET-accredited rating software, rated feature and specification data derived from home plans, features and specifications, and other data selected or assumed by the rater. The projected HERS index is approximate and is subject to change without notice. Actual results will vary.

*This information is presented for education purposes only. The HERS index for a confirmed rating will be determined by a third-party HERS rater based on data gathered from on-site observations and, if required, testing of rated features for a home as featured, optioned, located, oriented and/or built.
+Standard new home is based on the RESNET® Reference Home definition with a HERS® index of 100 (based on the 2006 International Energy Conservation Code).
++Typical resale home is based on the U.S. Department of Energy definition with a HERS® index of 130.

^RESNET® has developed the HERS® index to indicate the comparative efficiencies of homes. It is no guarantee that energy efficiencies will be achieved.