

HEIDI



Elevation A

Approx. square feet: 4,200

Stories: 2

Bedrooms: 4 - 5

Garage: 3-car

Plan Number: F42H

The exterior of the Heidi is highlighted by a wide front porch, comfortable covered patio and a side-entry garage. Inside, there's a gourmet kitchen with a large center island and breakfast bar, a walk-in pantry and access to the formal dining room. Relax in the main-floor master suite, which features a deluxe bath and immense walk-in closet. The second floor offers three inviting bedrooms and an airy loft space.

Available elevations:



Elevation A



Elevation B



Elevation C - Shown w/ opt. stone



Elevation D



Elevation E



Elevation J

HOME GALLERY

2822 Commerce Park Drive, Suite 100
Orlando, FL 32819
321-418-3095



HOME GALLERY

2822 Commerce Park Drive, Suite 100
Orlando, FL 32819
321-418-3095

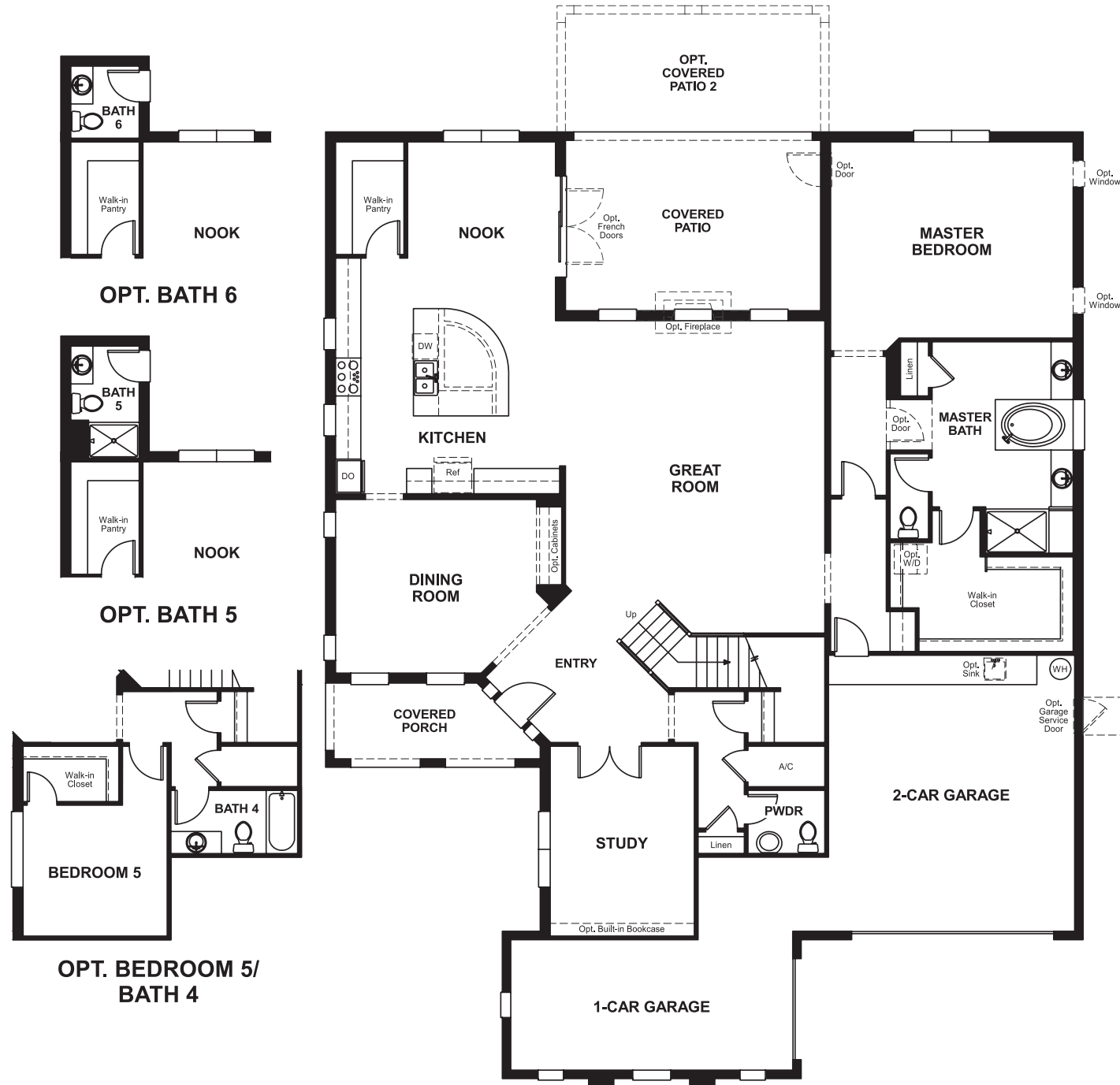


HEIDI

Approx. square feet: 4,200
Stories: 2
Bedrooms: 4 - 5

Garage: 3-car
Plan Number: F42H

Floor Plan
Main Floor



Floor Plan
Second Floor



**THIS PLAN'S PROJECTED
HERS® INDEX = 61***
Projected Rating Based on Plans – Field Confirmation Required

How does this floor plan rate?
Take a look: 100 = Standard new home* 130 = Typical resale home**
The lower the number, the better! Refer to the RESNET® HERS index brochure or go to www.RESNET.us for details.

What's a HERS® Index? HERS stands for Home Energy Rating System, a system created by RESNET® to measure home energy efficiency. A Projected HERS index or rating is a computer simulation performed prior to construction by a third-party HERS rater using RESNET-accredited rating software, rated feature and specification data derived from home plans, features and specifications, and other data selected or assumed by the rater. The projected HERS index is approximate and is subject to change without notice. Actual results will vary.

*This information is presented for education purposes only. The HERS index for a confirmed rating will be determined by a third-party HERS rater based on data gathered from on-site observations and, if required, testing of rated features for a home as featured, optioned, located, oriented and/or built.
+Standard new home is based on the RESNET® Reference Home definition with a HERS® index of 100 (based on the 2006 International Energy Conservation Code).
++Typical resale home is based on the U.S. Department of Energy definition with a HERS® index of 130.

^RESNET® has developed the HERS® index to indicate the comparative efficiencies of homes. It is no guarantee that energy efficiencies will be achieved.