

Tanyard Cove  
**HEMINGWAY**

**Approx. square feet:** 2,550  
**Stories:** 2  
**Bedrooms:** 4 - 6

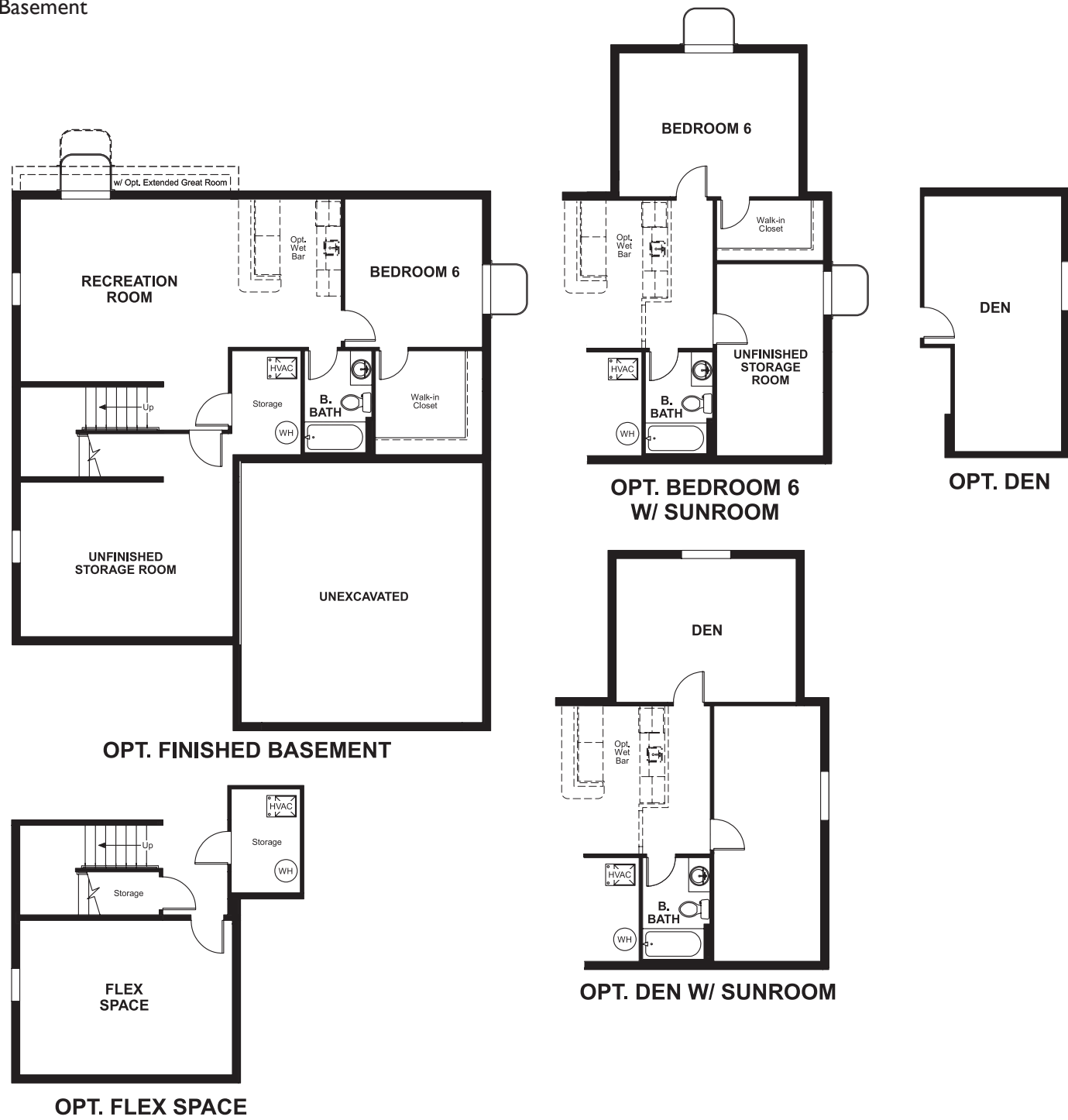
**Garage:** 2-car  
**Plan Number:** M250

Tanyard Cove  
**HEMINGWAY**

**Approx. square feet:** 2,550  
**Stories:** 2  
**Bedrooms:** 4 - 6  
**Garage:** 2-car  
**Plan Number:** M250

This plan features an entryway with adjacent flex space that can be personalized to suit your needs. At the back of the home, you'll find a great room with optional corner fireplace, a large kitchen with island and a mudroom with walk-in pantry. An upstairs laundry room and loft complete this home.

**Floor Plan**  
Basement



**Elevation A**

**Available elevations:**



**Elevation A**



**Elevation B**



**Elevation C**



**Elevation D**

**COMMUNITY LOCATION**  
302 Daleview Drive  
Glen Burnie, MD 21060  
410-312-2829



**COMMUNITY LOCATION**  
302 Daleview Drive  
Glen Burnie, MD 21060  
410-312-2829



Tanyard Cove  
**HEMINGWAY**

**Approx. square feet:** 2,550  
**Stories:** 2  
**Bedrooms:** 4 - 6

**Garage:** 2-car  
**Plan Number:** M250

**Floor Plan**  
Main Floor



**Floor Plan**  
Second Floor

