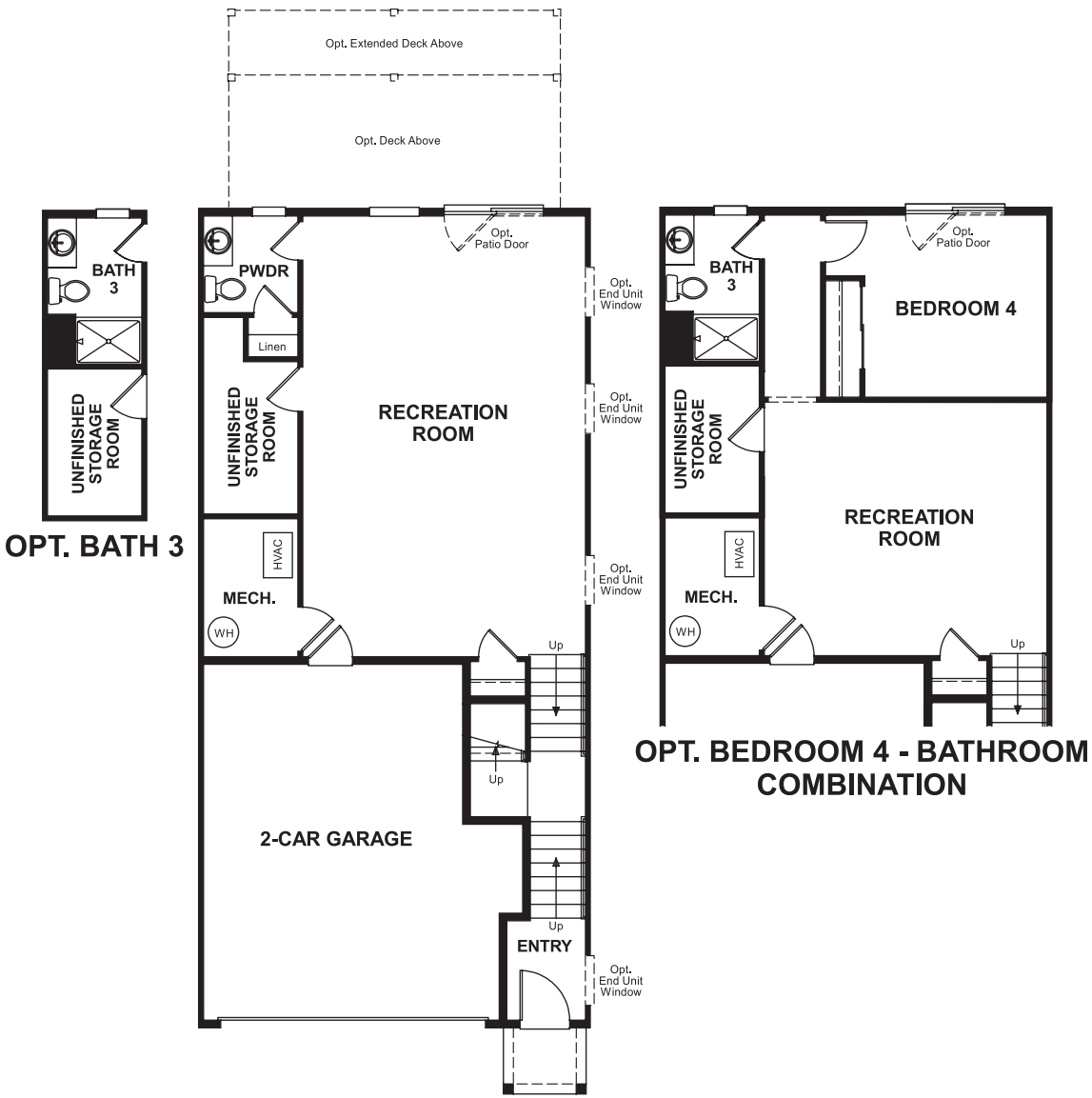


Ashburn Knolls
KEVIN

Approx. square feet: 2,950
Stories: 3
Bedrooms: 3 - 4
Garage: 2-car
Plan Number: V299

Floor Plan
Lower Floor



COMMUNITY LOCATION
21491 Willow Breeze Square
Ashburn, VA 20147
703-390-0950

HOME GALLERY
1139 Government Center Parkway
Fairfax, VA 22030
888-891-7349

Ashburn Knolls
KEVIN

Approx. square feet: 2,950
Stories: 3
Bedrooms: 3 - 4
Garage: 2-car
Plan Number: V299

The main floor of the luxurious Kevin plan offers a formal dining room, a spacious great room with an optional fireplace and a well-appointed kitchen with a center island, walk-in pantry and optional gourmet features. Upstairs, you'll find a convenient laundry and a lavish master suite with a sitting area and optional deluxe bath. You'll also appreciate the 2-car garage and expansive recreation room on the lower floor.



Elevation E / B / C / F / A / G / D

Available elevations:



Elevation E / B / C / F / A / G / D

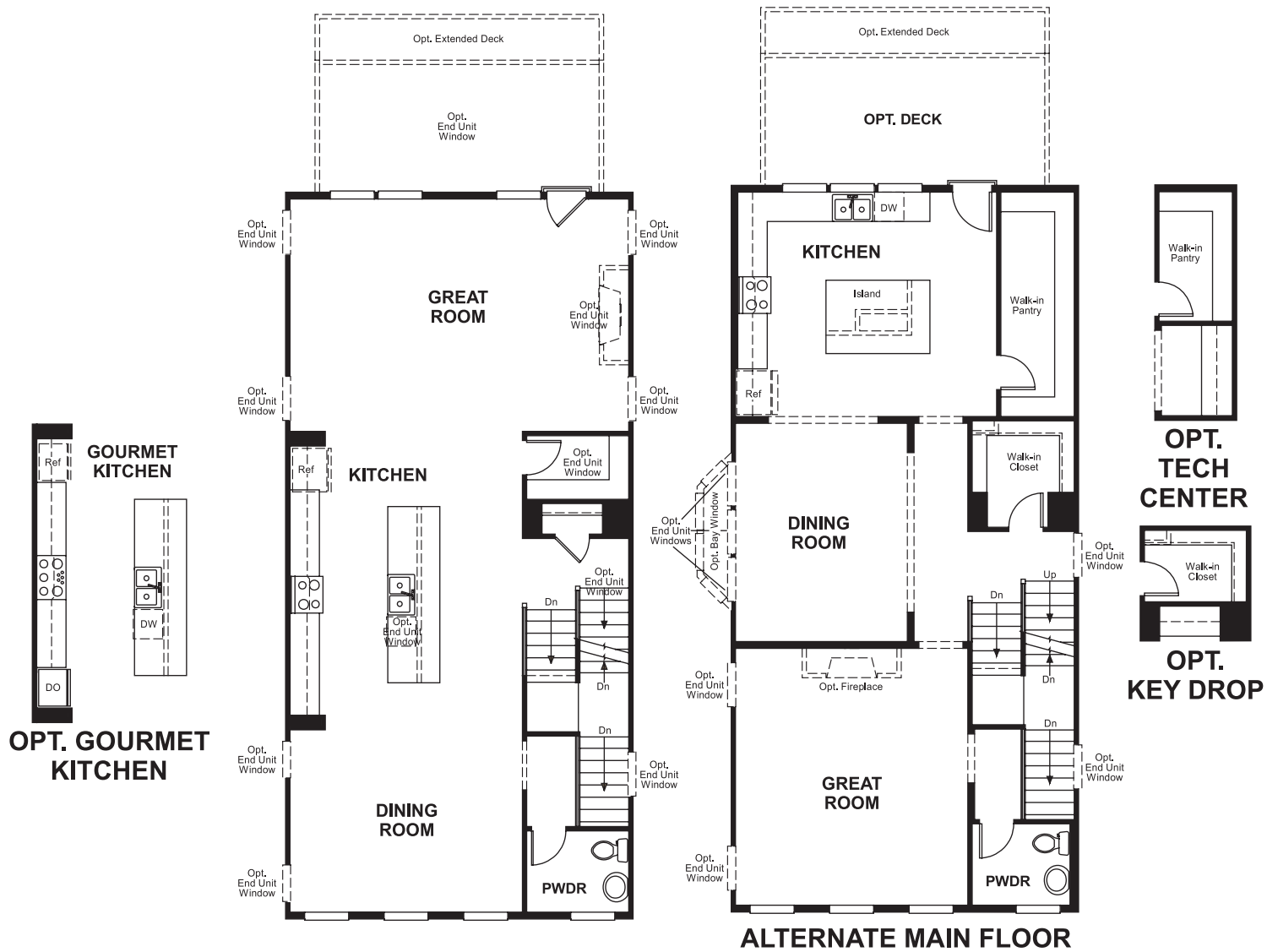
COMMUNITY LOCATION
21491 Willow Breeze Square
Ashburn, VA 20147
703-390-0950

HOME GALLERY
1139 Government Center Parkway
Fairfax, VA 22030
888-891-7349

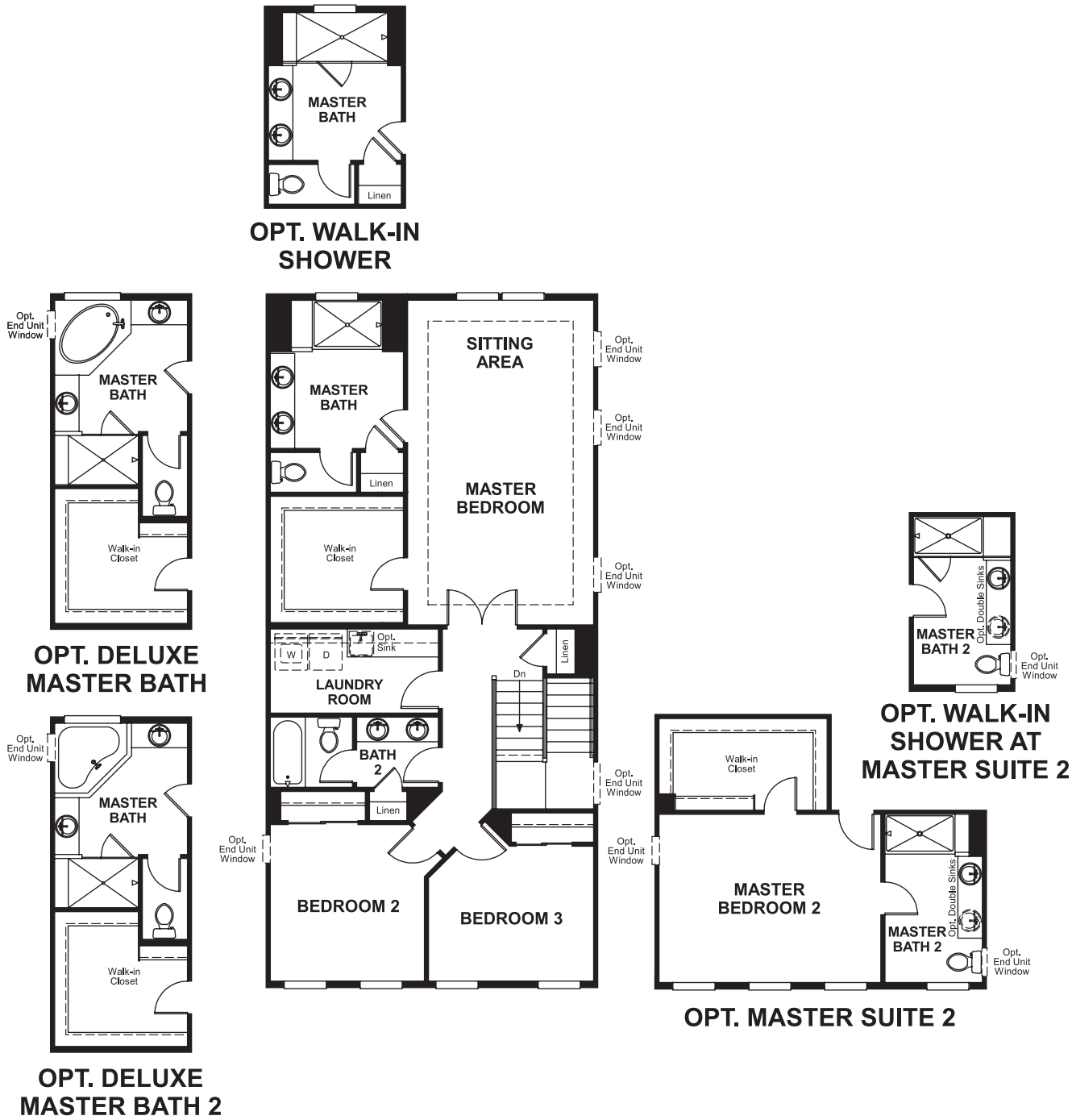
Ashburn Knolls
KEVIN

Approx. square feet: 2,950
Stories: 3
Bedrooms: 3 - 4
Garage: 2-car
Plan Number: V299

Floor Plan
Main Floor



Floor Plan
Second Floor



**THIS PLAN'S PROJECTED
HERS® INDEX = 65 ***
Projected Rating Based on Plans – Field Confirmation Required

How does this floor plan rate?
Take a look: **100** = Standard new home* **130** = Typical resale home**
The lower the number, the better! Refer to the RESNET® HERS index brochure or go to www.RESNET.us for details.

What's a HERS® Index? HERS stands for Home Energy Rating System, a system created by RESNET® to measure home energy efficiency.^\nA Projected HERS index or rating is a computer simulation performed prior to construction by a third-party HERS rater using RESNET-accredited rating software, rated feature and specification data derived from home plans, features and specifications, and other data selected or assumed by the rater. The projected HERS index is approximate and is subject to change without notice. Actual results will vary.

*This information is presented for education purposes only. The HERS index for a confirmed rating will be determined by a third-party HERS rater based on data gathered from on-site observations and, if required, testing of rated features for a home as featured, optioned, located, oriented and/or built.
+Standard new home is based on the RESNET® Reference Home definition with a HERS® index of 100 (based on the 2006 International Energy Conservation Code).
++Typical resale home is based on the U.S. Department of Energy definition with a HERS® index of 130.

^RESNET® has developed the HERS® index to indicate the comparative efficiencies of homes. It is no guarantee that energy efficiencies will be achieved.