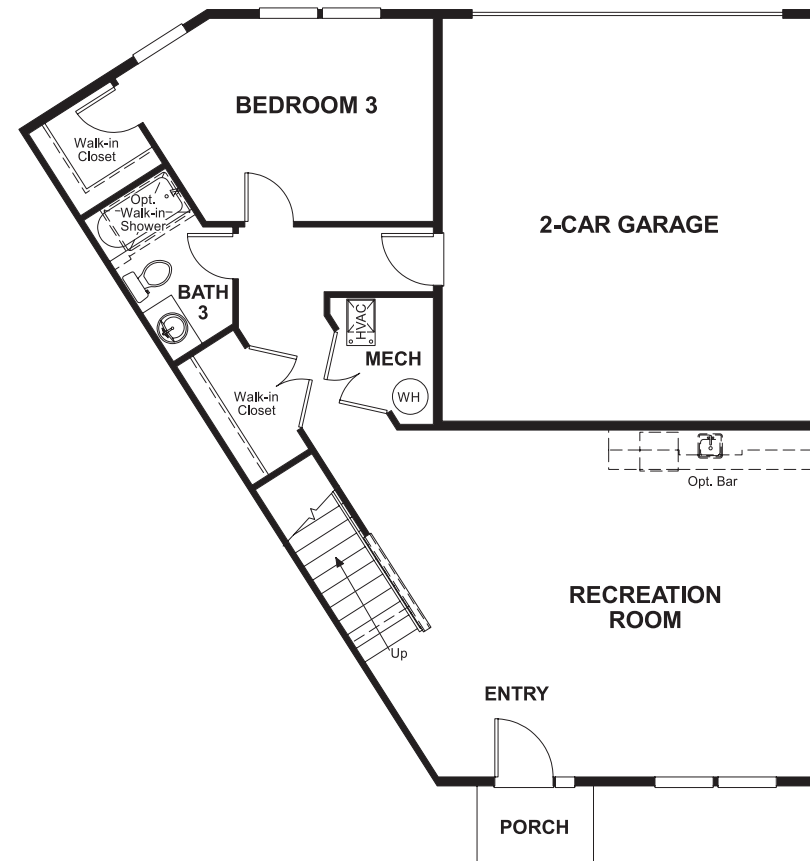


Madison Crescent
KNIGHTLEY

Approx. square feet: 3,300
Stories: 3
Bedrooms: 3 - 5

Garage: 2-car
Plan Number: V730

Floor Plan
Lower Floor



Madison Crescent
KNIGHTLEY

Approx. square feet: 3,300
Stories: 3
Bedrooms: 3 - 5
Garage: 2-car
Plan Number: V730



Elevation A

Available elevations:



Elevation A

Available exclusively at Madison Crescent, this three-story townhome offers a two-car garage, spacious rec room, bedroom and full bath on the lower level. Upstairs, on the main floor, you'll find an open great room, kitchen and dining area, as well as a private study, powder room, convenient laundry and large walk-in pantry. Each of the top-floor bedrooms has its own walk-in closet and full bath, and the adjacent loft has a powder room and storage closet as well. Gourmet kitchen options, additional bedrooms and deluxe bath features are available.

COMMUNITY LOCATION

16010 Madison Ridge Place
Gainesville, VA 20155
888-891-7349

HOME GALLERY

11393 Government Center Parkway
Fairfax, VA 22030
888-891-7349



COMMUNITY LOCATION

16010 Madison Ridge Place
Gainesville, VA 20155
888-891-7349

HOME GALLERY

11393 Government Center Parkway
Fairfax, VA 22030
888-891-7349



Madison Crescent
KNIGHTLEY

Approx. square feet: 3,300
Stories: 3
Bedrooms: 3 - 5

Garage: 2-car
Plan Number: V730

Floor Plan
Main Floor



Floor Plan
Second Floor

