

Los Arroyos  
**LAUREN**



**Elevation A**

**Available elevations:**



**Elevation A**



**Elevation B**



**Elevation C**

**Approx. square feet:** 2,180

**Stories:** 2

**Bedrooms:** 4 - 6

**Garage:** 2-car

**Plan Number:** T21L

Welcome to the charming Lauren floor plan. The moment you enter, you'll be greeted with a two-story entry. The main floor also features a private study, open great room and u-shaped kitchen with optional island. Upstairs, retreat to a large master suite, including an attached bath with private water closet, expansive walk-in closet and optional sitting area. Many options for personalization!



**COMMUNITY LOCATION**  
18309 South Avenida Arroyo Seco  
Green Valley, AZ 85614  
520-498-4150

**HOME GALLERY**  
3091 West Ina Road  
Tucson, AZ 85714  
877-346-8102



**COMMUNITY LOCATION**  
18309 South Avenida Arroyo Seco  
Green Valley, AZ 85614  
520-498-4150

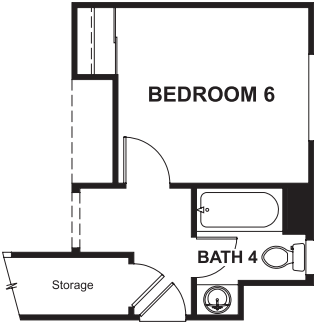
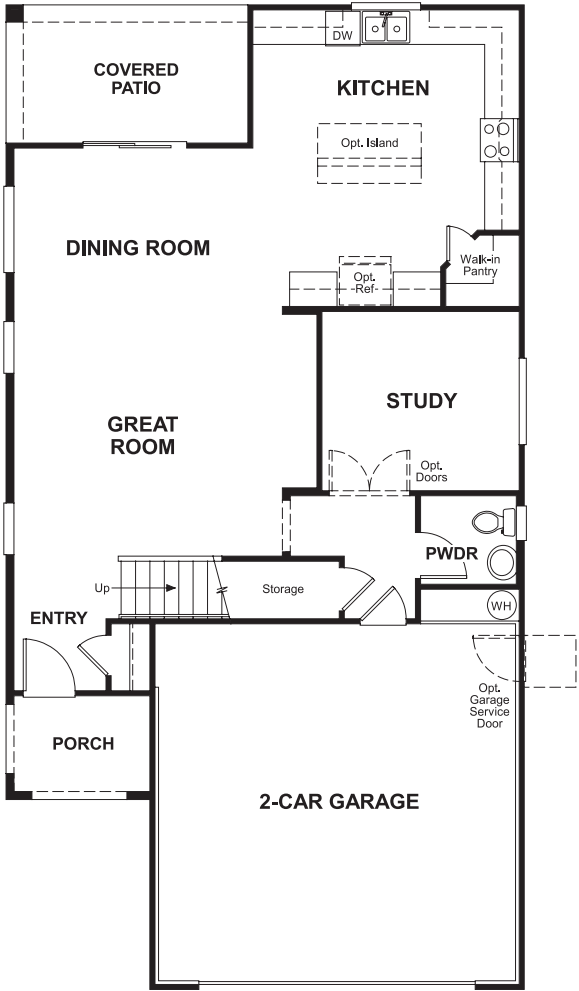
**HOME GALLERY**  
3091 West Ina Road  
Tucson, AZ 85714  
877-346-8102

Los Arroyos  
**LAUREN**

**Approx. square feet:** 2,180  
**Stories:** 2  
**Bedrooms:** 4 - 6

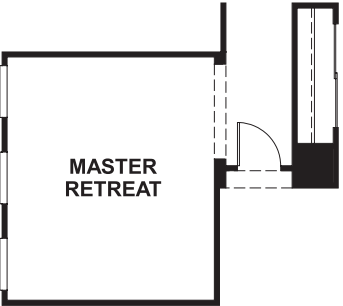
**Garage:** 2-car  
**Plan Number:** T21L

**Floor Plan**  
Main Floor

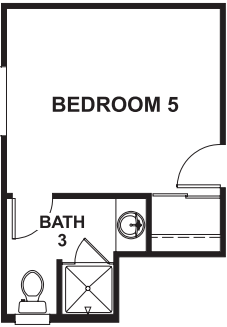


**OPT. BEDROOM 6/BATH 4**

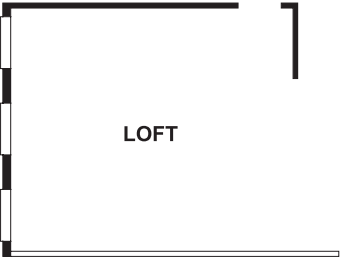
**Floor Plan**  
Second Floor



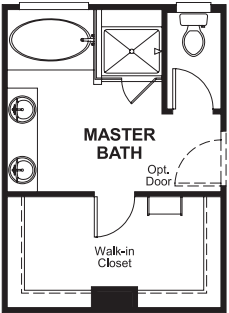
**OPT. MASTER RETREAT**



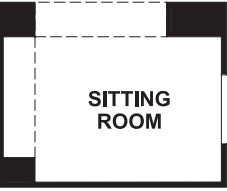
**OPT. BEDROOM 5/BATH 3**



**OPT. LOFT**



**OPT. DELUXE MASTER BATH**



**OPT. SITTING ROOM**

**THIS PLAN'S PROJECTED  
HERS® INDEX = 66 \***  
Projected Rating Based on Plans – Field Confirmation Required

**How does this floor plan rate?**  
Take a look: **100** = Standard new home\* **130** = Typical resale home\*\*  
The lower the number, the better! Refer to the RESNET® HERS index brochure or go to **www.RESNET.us** for details.

**What's a HERS® Index?** HERS stands for Home Energy Rating System, a system created by RESNET® to measure home energy efficiency.^  
A Projected HERS index or rating is a computer simulation performed prior to construction by a third-party HERS rater using RESNET-accredited rating software, rated feature and specification data derived from home plans, features and specifications, and other data selected or assumed by the rater. The projected HERS index is approximate and is subject to change without notice. Actual results will vary.

\*This information is presented for education purposes only. The HERS index for a confirmed rating will be determined by a third-party HERS rater based on data gathered from on-site observations and, if required, testing of rated features for a home as featured, optioned, located, oriented and/or built.  
+Standard new home is based on the RESNET® Reference Home definition with a HERS® index of 100 (based on the 2006 International Energy Conservation Code).  
++Typical resale home is based on the U.S. Department of Energy definition with a HERS® index of 130.

^RESNET® has developed the HERS® index to indicate the comparative efficiencies of homes. It is no guarantee that energy efficiencies will be achieved.