

Seola Gardens  
**LEAH**



**Elevation A**

**Approx. square feet:** 2,350  
**Stories:** 2  
**Bedrooms:** 3 - 4  
**Garage:** 2-car  
**Plan Number:** W229

The main floor of the Leah plan boasts a generous dining room, a great room with a fireplace and a charming kitchen with a spacious island and walk-in pantry. You'll also appreciate the convenient coat closet and powder room. Upstairs, enjoy a relaxing loft and three inviting bedrooms, including an elegant master suite. Make this plan your own with exciting options, such as a gourmet or chef's kitchen and a covered deck.

**Available elevations:**



**Elevation A**



**Elevation B**



**Elevation C**

**COMMUNITY LOCATION**

10934 4<sup>th</sup> Place South West  
 Seattle, WA 98146  
 206-757-2815

**HOME GALLERY**

20829 72<sup>nd</sup> Avenue South, Suite 115  
 Kent, WA 98032  
 253-446-7277



**COMMUNITY LOCATION**

10934 4<sup>th</sup> Place South West  
 Seattle, WA 98146  
 206-757-2815

**HOME GALLERY**

20829 72<sup>nd</sup> Avenue South, Suite 115  
 Kent, WA 98032  
 253-446-7277

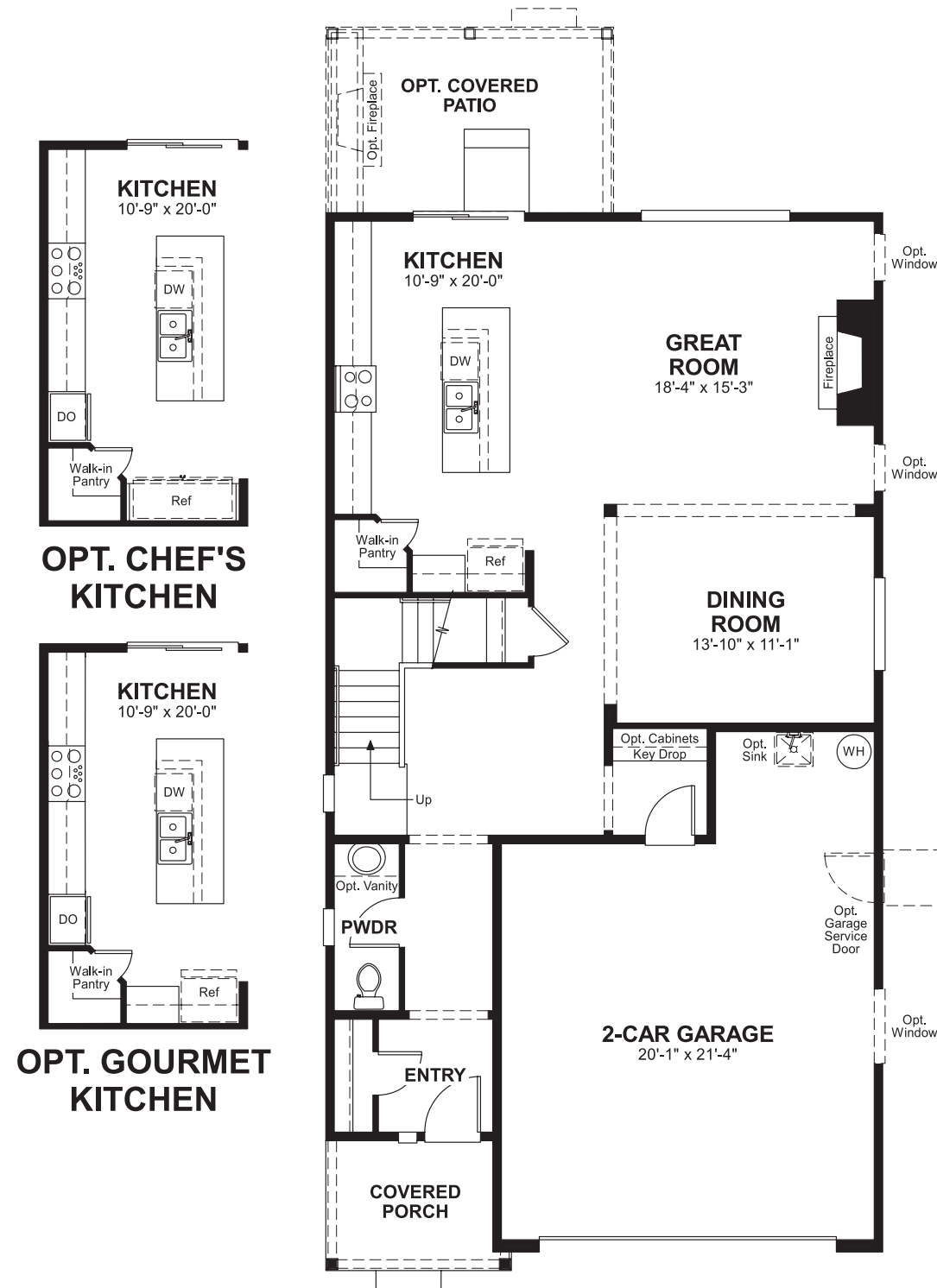


Seola Gardens  
**LEAH**

**Approx. square feet:** 2,350  
**Stories:** 2  
**Bedrooms:** 3 - 4

**Garage:** 2-car  
**Plan Number:** W229

**Floor Plan**  
Main Floor



**Floor Plan**  
Second Floor



**THIS PLAN'S PROJECTED**  
**HERS® INDEX = 65\***  
Projected Rating Based on Plans – Field Confirmation Required

**How does this floor plan rate?**  
Take a look: **100** = Standard new home\* **130** = Typical resale home\*\*  
The lower the number, the better! Refer to the RESNET® HERS index brochure or go to [www.RESNET.us](http://www.RESNET.us) for details.

**What's a HERS® Index?** HERS stands for Home Energy Rating System, a system created by RESNET® to measure home energy efficiency. A Projected HERS index or rating is a computer simulation performed prior to construction by a third-party HERS rater using RESNET-accredited rating software, rated feature and specification data derived from home plans, features and specifications, and other data selected or assumed by the rater. The projected HERS index is approximate and is subject to change without notice. Actual results will vary.

\*This information is presented for education purposes only. The HERS index for a confirmed rating will be determined by a third-party HERS rater based on data gathered from on-site observations and, if required, testing of rated features for a home as featured, optioned, located, oriented and/or built.  
+Standard new home is based on the RESNET® Reference Home definition with a HERS® index of 100 (based on the 2006 International Energy Conservation Code).  
++Typical resale home is based on the U.S. Department of Energy definition with a HERS® index of 130.

^RESNET® has developed the HERS® index to indicate the comparative efficiencies of homes. It is no guarantee that energy efficiencies will be achieved.