

Los Arroyos
MADISON



Elevation A

Approx. square feet: 2,500
Stories: 2
Bedrooms: 3 - 5
Garage: 2-car
Plan Number: T245

The inviting two-story Madison floor plan has many spaces to entertain in style, including an open great room, spacious kitchen with optional center island and an elegant dining area. Upstairs is a convenient laundry room, as well as an expansive master suite with walk-in closet. A deluxe master bath is also available!

Available elevations:



Elevation A



Elevation B



Elevation C



COMMUNITY LOCATION
 18309 South Avenida Arroyo Seco
 Green Valley, AZ 85614
 520-498-4150

HOME GALLERY
 3091 West Ina Road
 Tucson, AZ 85714
 877-346-8102



COMMUNITY LOCATION
 18309 South Avenida Arroyo Seco
 Green Valley, AZ 85614
 520-498-4150

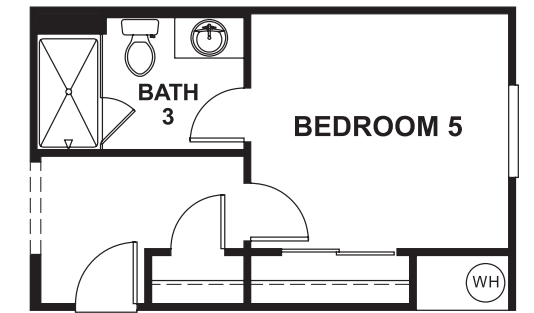
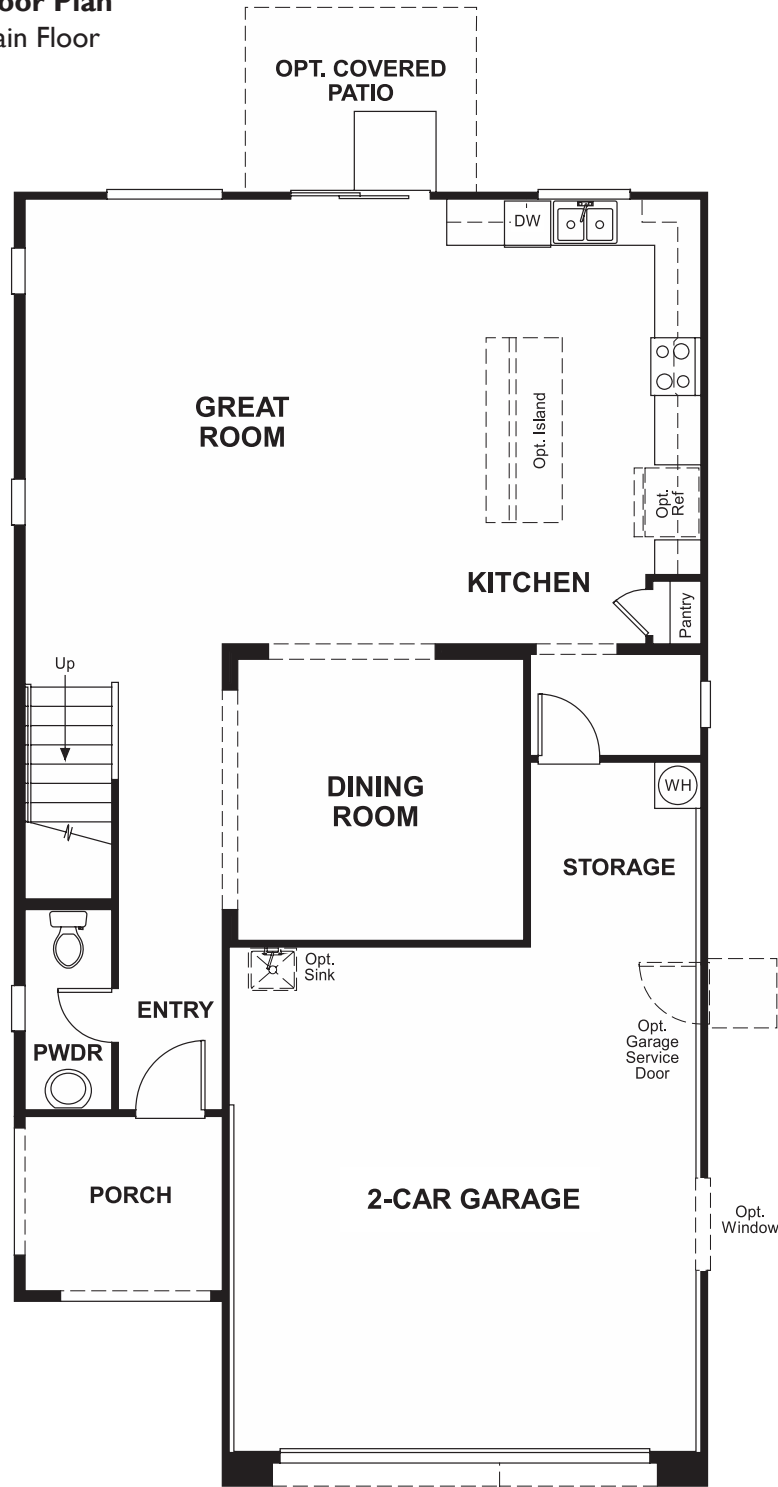
HOME GALLERY
 3091 West Ina Road
 Tucson, AZ 85714
 877-346-8102

Los Arroyos
MADISON

Approx. square feet: 2,500
Stories: 2
Bedrooms: 3 - 5

Garage: 2-car
Plan Number: T245

Floor Plan
Main Floor



Floor Plan
Second Floor



THIS PLAN'S PROJECTED HERS® INDEX = 63*
Projected Rating Based on Plans – Field Confirmation Required

How does this floor plan rate?
Take a look: **100** = Standard new home* **130** = Typical resale home**
The lower the number, the better! Refer to the RESNET® HERS index brochure or go to www.RESNET.us for details.

What's a HERS® Index? HERS stands for Home Energy Rating System, a system created by RESNET® to measure home energy efficiency.[^]
A Projected HERS index or rating is a computer simulation performed prior to construction by a third-party HERS rater using RESNET-accredited rating software, rated feature and specification data derived from home plans, features and specifications, and other data selected or assumed by the rater. The projected HERS index is approximate and is subject to change without notice. Actual results will vary.

*This information is presented for education purposes only. The HERS index for a confirmed rating will be determined by a third-party HERS rater based on data gathered from on-site observations and, if required, testing of rated features for a home as featured, optioned, located, oriented and/or built.
+Standard new home is based on the RESNET® Reference Home definition with a HERS® index of 100 (based on the 2006 International Energy Conservation Code).
++Typical resale home is based on the U.S. Department of Energy definition with a HERS® index of 130.

^RESNET® has developed the HERS® index to indicate the comparative efficiencies of homes. It is no guarantee that energy efficiencies will be achieved.