

PAIGE



Elevation A

Approx. square feet: 2,450

Stories: 1

Bedrooms: 3 - 5

Garage: 2- to 3-car

Plan Number: F24P

The Paige boasts a beautiful ranch-style layout that's distinguished by the great room with adjacent kitchen and breakfast nook, the master suite with walk-in closet and optional deluxe bath, the study and the expansive garage. Exciting options like a covered patio, gourmet kitchen, dining room or extra bedroom complete this elegant home.

Available elevations:



Elevation A



Elevation B



Elevation C - Shown w/ optional stone



Elevation D



Elevation E



Elevation F

HOME GALLERY
762 South Northlake Boulevard
Altamont Springs, FL 32701
321-441-3667



HOME GALLERY
762 South Northlake Boulevard
Altamont Springs, FL 32701
321-441-3667

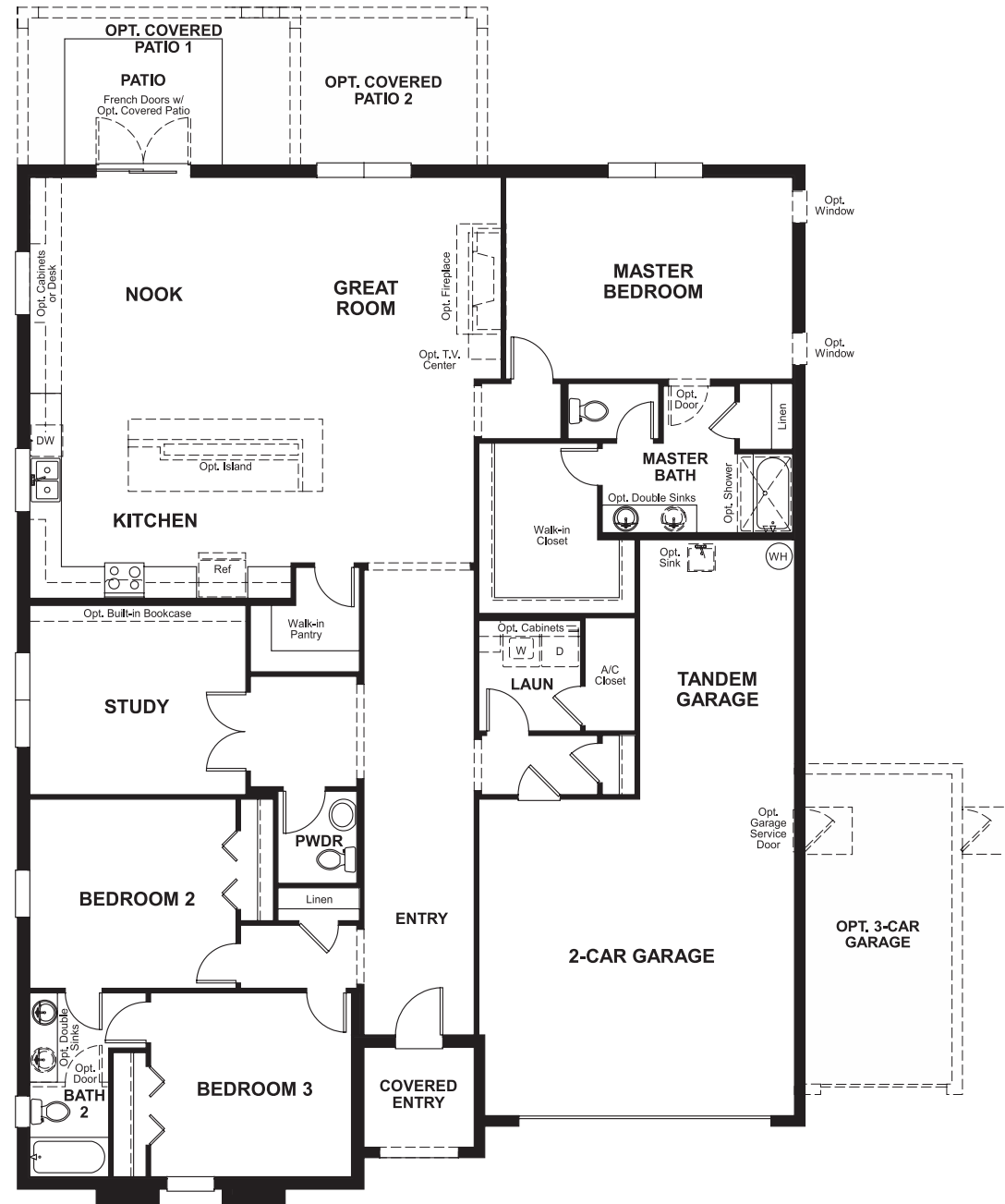


PAIGE

Approx. square feet: 2,450
Stories: 1
Bedrooms: 3 - 5

Garage: 2- to 3-car
Plan Number: F24P

Floor Plan
Main Floor



Floor Plan
Main Floor Options

