

La Jara Farms  
**REAGAN**



**Elevation A**

**Approx. square feet:** 3,500  
**Stories:** 1  
**Bedrooms:** 3  
**Garage:** 3-car  
**Plan Number:** P35R

The ranch-style Reagan plan offers a courtyard entry, covered porch and covered backyard patio, so you can enjoy your outdoor spaces. A study, wide foyer, dining room, great room, nook and kitchen provide ample space to entertain or relax. A butler's pantry and Jack-and-Jill bath set the plan apart.

**Available elevations:**



**Elevation A**



**Elevation B**



**Elevation C**



**COMMUNITY LOCATION**  
 19816 East Alamosa Drive  
 Queen Creek, AZ 85142  
 877-444-1485

**HOME GALLERY**  
 16427 North Scottsdale Road, Suite 175  
 Scottsdale, AZ 85254  
 877-444-1485



**COMMUNITY LOCATION**  
 19816 East Alamosa Drive  
 Queen Creek, AZ 85142  
 877-444-1485

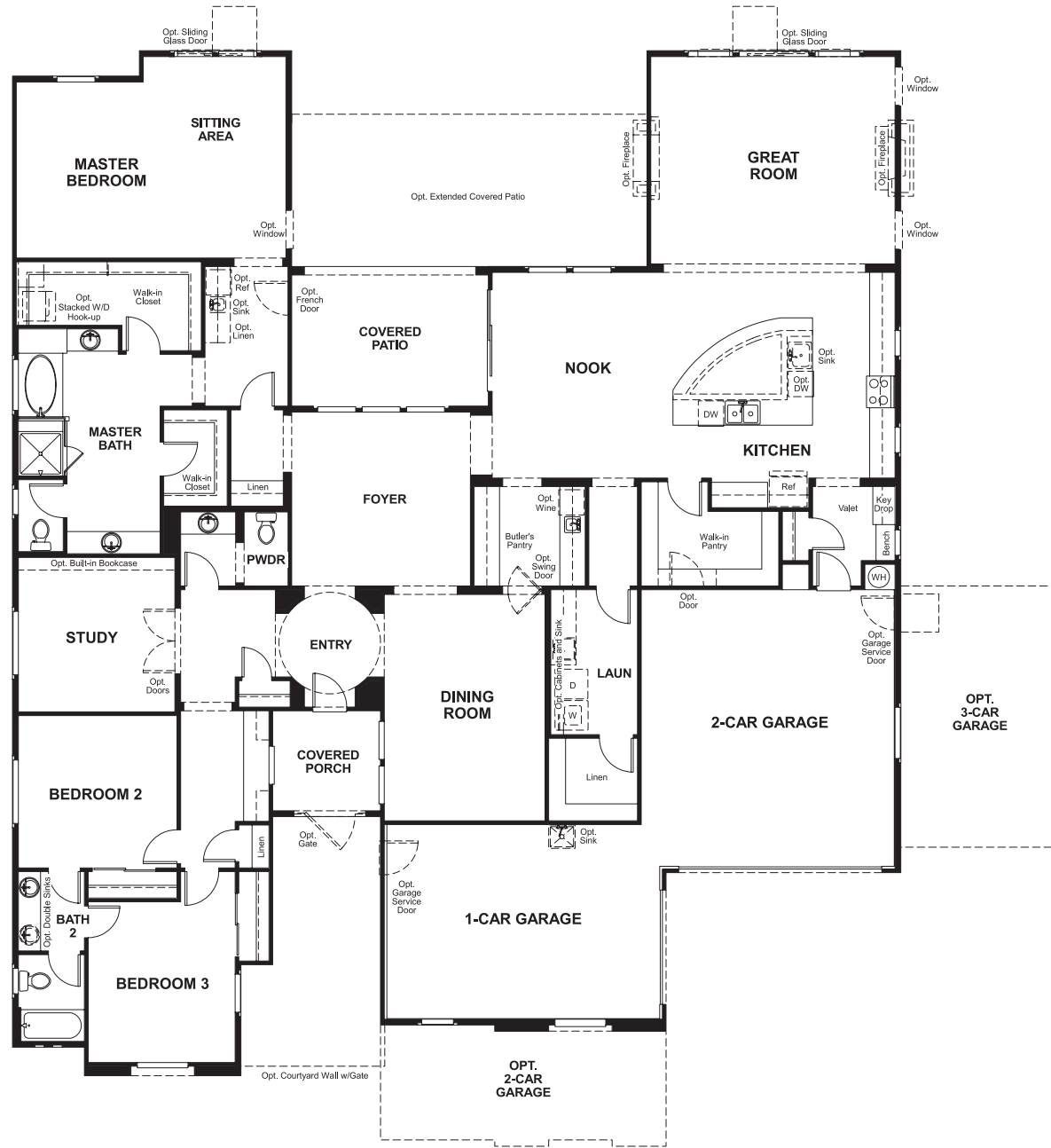
**HOME GALLERY**  
 16427 North Scottsdale Road, Suite 175  
 Scottsdale, AZ 85254  
 877-444-1485

La Jara Farms  
**REAGAN**

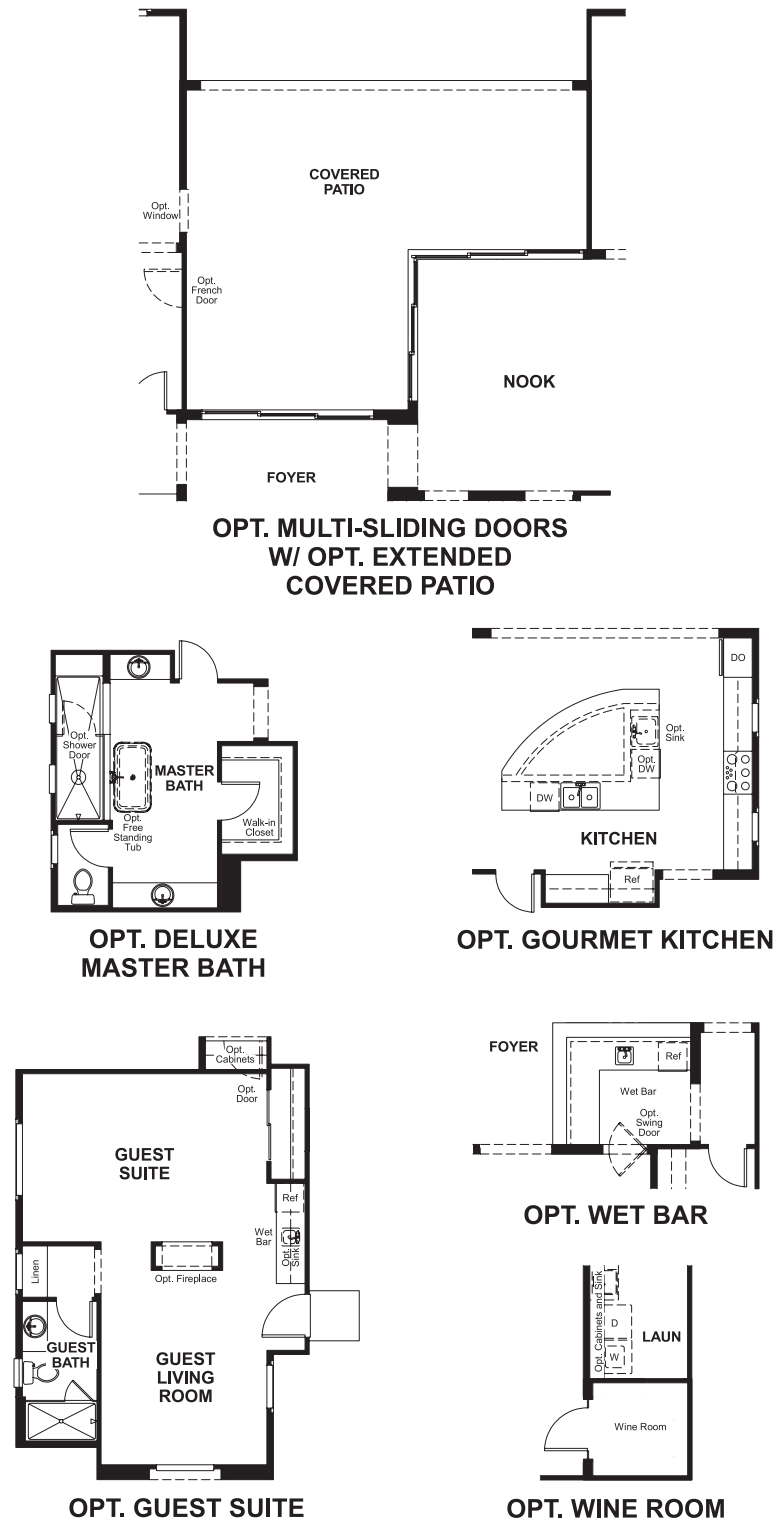
Approx. square feet: 3,500  
Stories: 1  
Bedrooms: 3

Garage: 3-car  
Plan Number: P35R

**Floor Plan**  
First Floor



**Floor Plan**  
First Floor Options



**THIS PLAN'S PROJECTED  
HERS® INDEX = 61** \*  
Projected Rating Based on Plans – Field Confirmation Required

**How does this floor plan rate?**  
Take a look: 100 = Standard new home\* 130 = Typical resale home\*\*  
The lower the number, the better! Refer to the RESNET® HERS index brochure or go to [www.RESNET.us](http://www.RESNET.us) for details.

**What's a HERS® Index?** HERS stands for Home Energy Rating System, a system created by RESNET® to measure home energy efficiency.<sup>^</sup>  
A Projected HERS index or rating is a computer simulation performed prior to construction by a third-party HERS rater using RESNET-accredited rating software, rated feature and specification data derived from home plans, features and specifications, and other data selected or assumed by the rater. The projected HERS index is approximate and is subject to change without notice. Actual results will vary.

\*This information is presented for education purposes only. The HERS index for a confirmed rating will be determined by a third-party HERS rater based on data gathered from on-site observations and, if required, testing of rated features for a home as featured, optioned, located, oriented and/or built.  
+Standard new home is based on the RESNET® Reference Home definition with a HERS® index of 100 (based on the 2006 International Energy Conservation Code).  
\*\*Typical resale home is based on the U.S. Department of Energy definition with a HERS® index of 130.

<sup>^</sup>RESNET® has developed the HERS® index to indicate the comparative efficiencies of homes. It is no guarantee that energy efficiencies will be achieved.