

**REECE**



**Elevation D**

**Available elevations:**



**Elevation D**



**Elevation E**



**Elevation F**

**Approx. square feet:** 3,750

**Stories:** 1

**Bedrooms:** 4 - 5

**Garage:** 3-car

**Plan Number:** F37R

A charming courtyard and covered front porch welcome guests to the ranch-style Reece plan. The entry is flanked by a private study and formal dining room, and just ahead, the expansive great room overlooks a relaxing covered patio. You'll also appreciate a convenient butler's pantry, a gourmet kitchen with a center island and optional professional features and a wide covered patio. The lavish master suite includes a deluxe bath and two walk-in closets, and options include a wine room and a guest suite.

**HOME GALLERY**

2822 Commerce Park Drive, Suite 100  
Orlando, FL 32819  
321-418-3095



**HOME GALLERY**

2822 Commerce Park Drive, Suite 100  
Orlando, FL 32819  
321-418-3095

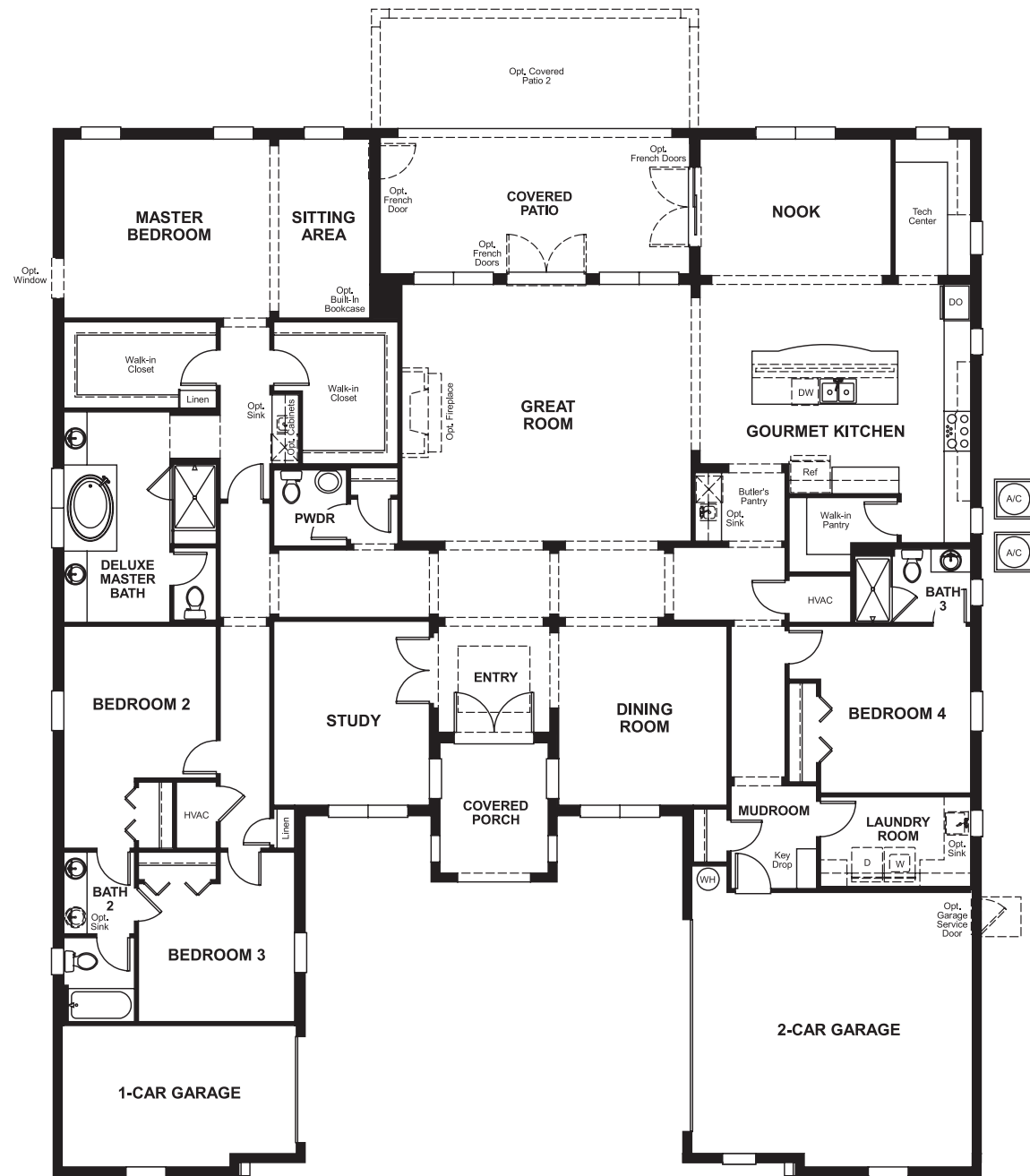


REECE

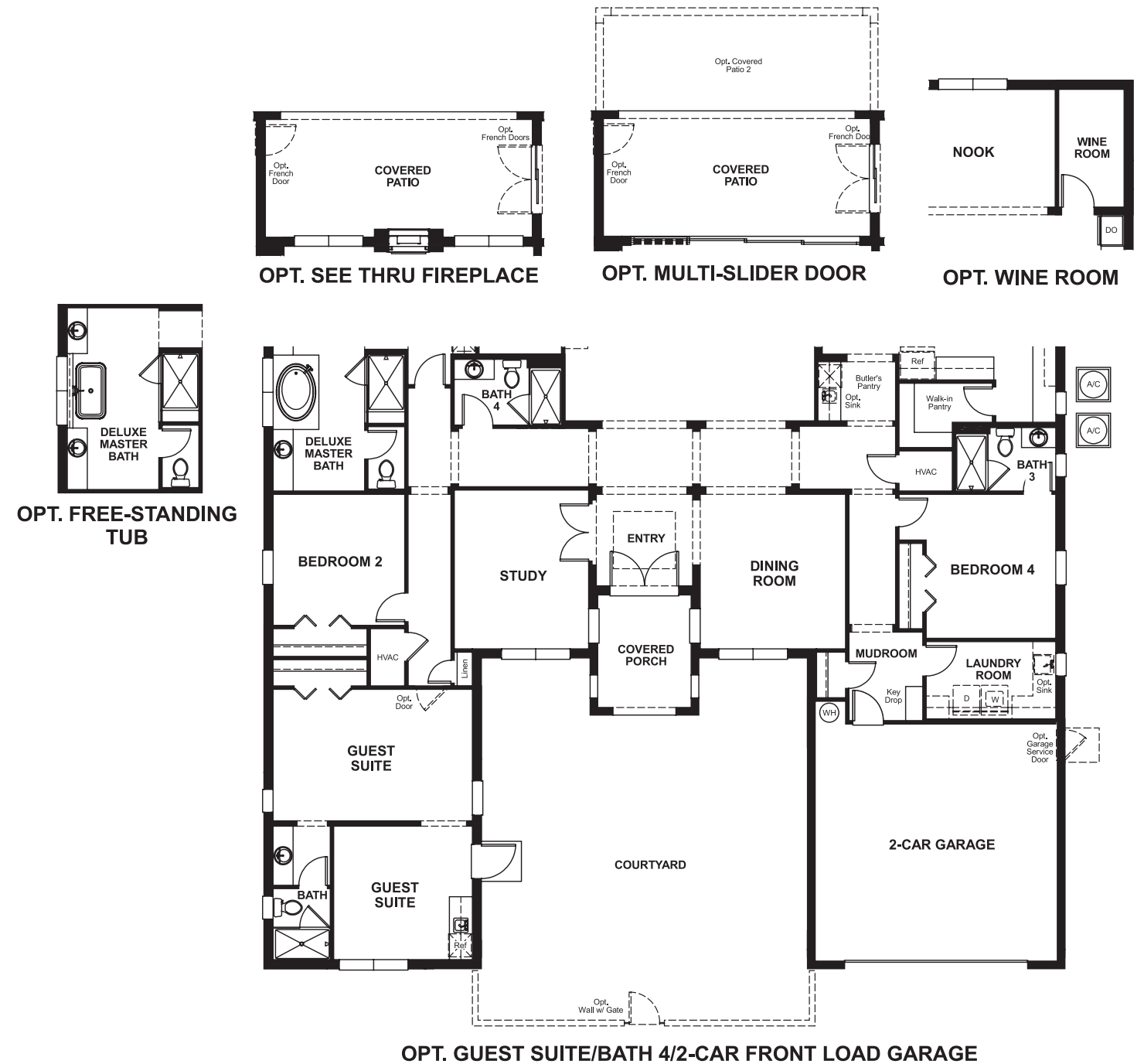
Approx. square feet: 3,750  
Stories: 1  
Bedrooms: 4 - 5

Garage: 3-car  
Plan Number: F37R

Floor Plan  
Main Floor



Floor Plan  
Main Floor Options



**THIS PLAN'S PROJECTED  
HERS® INDEX = 67\***  
Projected Rating Based on Plans – Field Confirmation Required

**How does this floor plan rate?**  
Take a look: **100** = Standard new home\* **130** = Typical resale home\*\*  
The lower the number, the better! Refer to the RESNET® HERS index brochure or go to [www.RESNET.us](http://www.RESNET.us) for details.

**What's a HERS® Index?** HERS stands for Home Energy Rating System, a system created by RESNET® to measure home energy efficiency.<sup>^</sup>  
A Projected HERS index or rating is a computer simulation performed prior to construction by a third-party HERS rater using RESNET-accredited rating software, rated feature and specification data derived from home plans, features and specifications, and other data selected or assumed by the rater. The projected HERS index is approximate and is subject to change without notice. Actual results will vary.

\*This information is presented for education purposes only. The HERS index for a confirmed rating will be determined by a third-party HERS rater based on data gathered from on-site observations and, if required, testing of rated features for a home as featured, optioned, located, oriented and/or built.  
+Standard new home is based on the RESNET® Reference Home definition with a HERS® index of 100 (based on the 2006 International Energy Conservation Code).  
\*\*Typical resale home is based on the U.S. Department of Energy definition with a HERS® index of 130.

<sup>^</sup>RESNET® has developed the HERS® index to indicate the comparative efficiencies of homes. It is no guarantee that energy efficiencies will be achieved.