

Tenaya Highlands
RINCON



Elevation A

Approx. square feet: 2,050

Stories: 1

Bedrooms: 3 - 4

Garage: 2-car

Plan Number: L191

Wide open entertaining space is the ranch-style Rincon's defining feature. There are no walls to block the view from the gourmet kitchen to the great room and dining room. Need a home office? There's a private study just off the entry! Two inviting bedrooms share a bath at the front of the home, while the master suite is located toward the back for privacy. Options: extra bedroom, deluxe master bath and more!

Available elevations:



Elevation A



Elevation B



Elevation C

COMMUNITY LOCATION

Buffalo Drive and Sunset Road
Las Vegas, NV 89113
702-638-4440

HOME GALLERY

7770 South Dean Martin Drive, Suite 308
Las Vegas, NV 80112
702-617-8400



COMMUNITY LOCATION

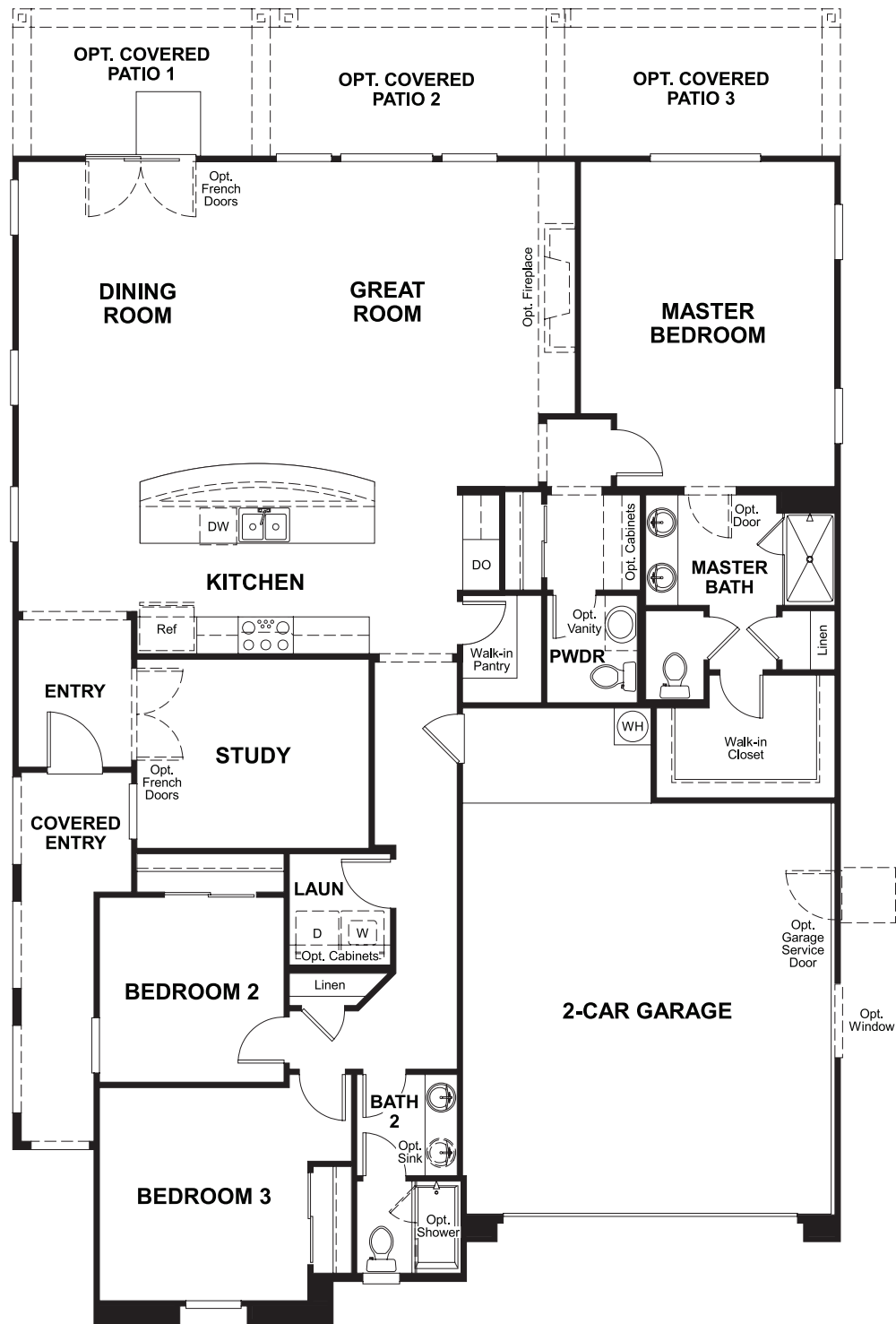
Buffalo Drive and Sunset Road
Las Vegas, NV 89113
702-638-4440

HOME GALLERY

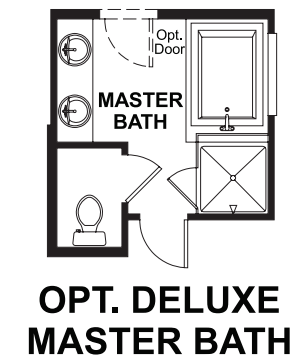
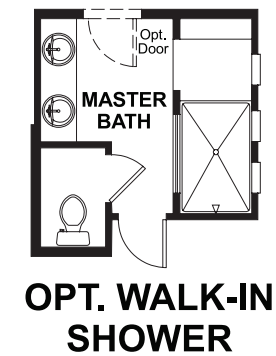
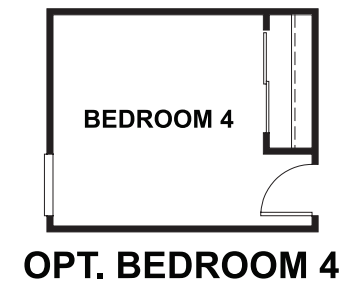
7770 South Dean Martin Drive, Suite 308
Las Vegas, NV 80112
702-617-8400



Floor Plan
Main Floor



Floor Plan
Main Floor Options



**THIS PLAN'S PROJECTED
HERS® INDEX = 68***
Projected Rating Based on Plans – Field Confirmation Required

How does this floor plan rate?
Take a look: **100** = Standard new home* **130** = Typical resale home**
The lower the number, the better! Refer to the RESNET® HERS index brochure or go to www.RESNET.us for details.

What's a HERS® Index? HERS stands for Home Energy Rating System, a system created by RESNET® to measure home energy efficiency.[^]
A Projected HERS index or rating is a computer simulation performed prior to construction by a third-party HERS rater using RESNET-accredited rating software, rated feature and specification data derived from home plans, features and specifications, and other data selected or assumed by the rater. The projected HERS index is approximate and is subject to change without notice. Actual results will vary.

*This information is presented for education purposes only. The HERS index for a confirmed rating will be determined by a third-party HERS rater based on data gathered from on-site observations and, if required, testing of rated features for a home as featured, optioned, located, oriented and/or built.
+Standard new home is based on the RESNET® Reference Home definition with a HERS® index of 100 (based on the 2006 International Energy Conservation Code).
++Typical resale home is based on the U.S. Department of Energy definition with a HERS® index of 130.

[^]RESNET® has developed the HERS® index to indicate the comparative efficiencies of homes. It is no guarantee that energy efficiencies will be achieved.