

The Estates at Madera Highlands
ROBYN



Elevation A

Approx. square feet: 3,250
Stories: 1
Bedrooms: 4 - 5
Garage: 3-car
Plan Number: T32R

The ranch-style Robyn plan offers an inviting great room, which opens to a well-appointed kitchen with center island, walk-in pantry and breakfast nook. You'll also appreciate the quiet study, spacious dining room with optional butler's pantry and relaxing covered patio. Every bedroom features a generous walk-in closet, and the elegant master suite includes two. Personalize this plan with an optional gourmet or professional kitchen, a deluxe master bath and more.

Available elevations:



Elevation A



Elevation B



Elevation C



COMMUNITY LOCATION
 1189 East Madera Estates Lane
 Suhuarita, AZ 85629
 520-498-4155

HOME GALLERY
 3091 West Ina Road
 Tucson, AZ 85741
 877-346-8102



COMMUNITY LOCATION
 1189 East Madera Estates Lane
 Suhuarita, AZ 85629
 520-498-4155

HOME GALLERY
 3091 West Ina Road
 Tucson, AZ 85741
 877-346-8102

The Estates at Madera Highlands
ROBYN

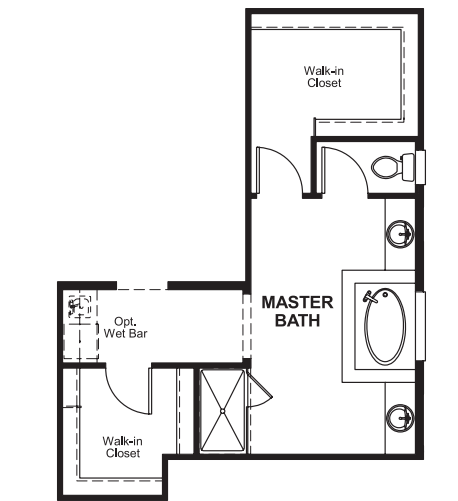
Approx. square feet: 3,250
Stories: 1
Bedrooms: 4 - 5

Garage: 3-car
Plan Number: T32R

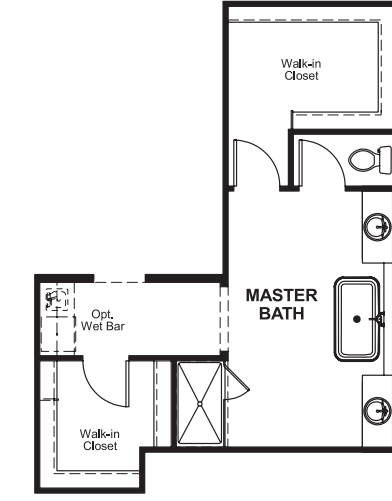
Floor Plan
First Floor



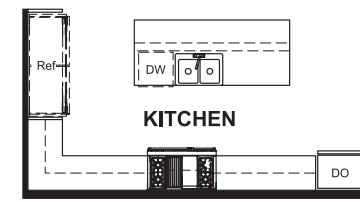
Floor Plan
First Floor Options



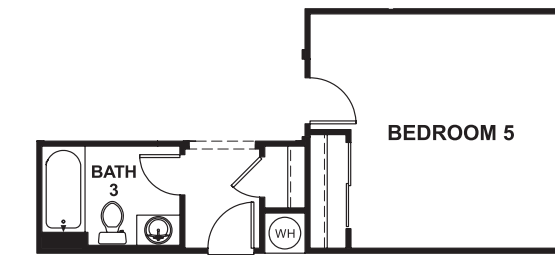
OPT. DELUXE MASTER BATH



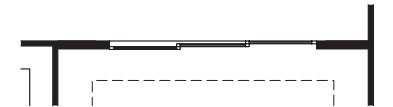
OPT. FREE STANDING TUB



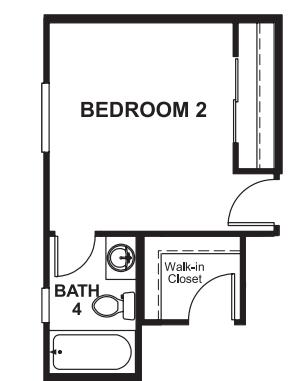
OPT. PROFESSIONAL KITCHEN



OPT. BEDROOM 5/BATH 3



OPT. MULTI-SLIDE DOORS



OPT. BATH 4

THIS PLAN'S PROJECTED HERS® INDEX = 63*
Projected Rating Based on Plans – Field Confirmation Required

How does this floor plan rate?
Take a look: **100** = Standard new home* **130** = Typical resale home**
The lower the number, the better! Refer to the RESNET® HERS index brochure or go to www.RESNET.us for details.

What's a HERS® Index? HERS stands for Home Energy Rating System, a system created by RESNET® to measure home energy efficiency. A Projected HERS index or rating is a computer simulation performed prior to construction by a third-party HERS rater using RESNET-accredited rating software, rated feature and specification data derived from home plans, features and specifications, and other data selected or assumed by the rater. The projected HERS index is approximate and is subject to change without notice. Actual results will vary.

*This information is presented for education purposes only. The HERS index for a confirmed rating will be determined by a third-party HERS rater based on data gathered from on-site observations and, if required, testing of rated features for a home as featured, optioned, located, oriented and/or built.
+Standard new home is based on the RESNET® Reference Home definition with a HERS® index of 100 (based on the 2006 International Energy Conservation Code).
**Typical resale home is based on the U.S. Department of Energy definition with a HERS® index of 130.

^RESNET® has developed the HERS® index to indicate the comparative efficiencies of homes. It is no guarantee that energy efficiencies will be achieved.