

Paseo at Riverwalk Vista
TEAGAN



Elevation A

Approx. square feet: 2,650
Stories: 2
Bedrooms: 5
Garage: 3-car
Plan Number: S560

The beautiful Teagan plan was designed for entertaining, with an expansive great room and a well-appointed kitchen with center island and adjacent dining area. There's also a convenient main-floor bedroom and full bath, plus a large living room, which can be optioned as a formal dining room or den. The second floor offers four inviting bedrooms, including a luxurious master suite with private bath, and an optional bonus room.

Available elevations:



Elevation A



Elevation B



Elevation C

COMMUNITY LOCATION

10860 Rio Grande Lane
Riverside, CA 92503
951-351-1112

HOME GALLERY

5171 California Avenue, Suite 110
Irvine, CA 92617
800-852-9714



COMMUNITY LOCATION

10860 Rio Grande Lane
Riverside, CA 92503
951-351-1112

HOME GALLERY

5171 California Avenue, Suite 110
Irvine, CA 92617
800-852-9714

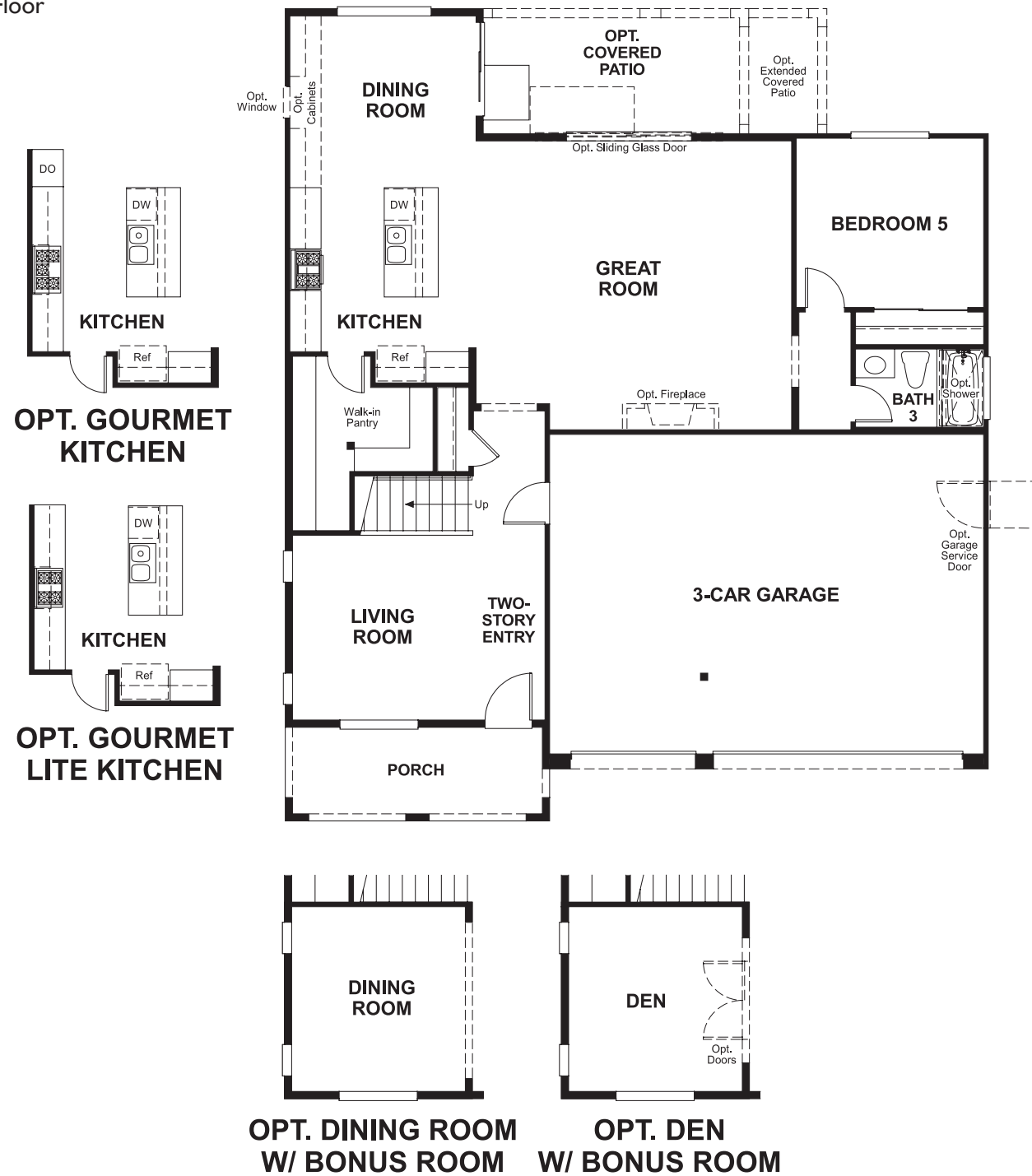


Paseo at Riverwalk Vista
TEAGAN

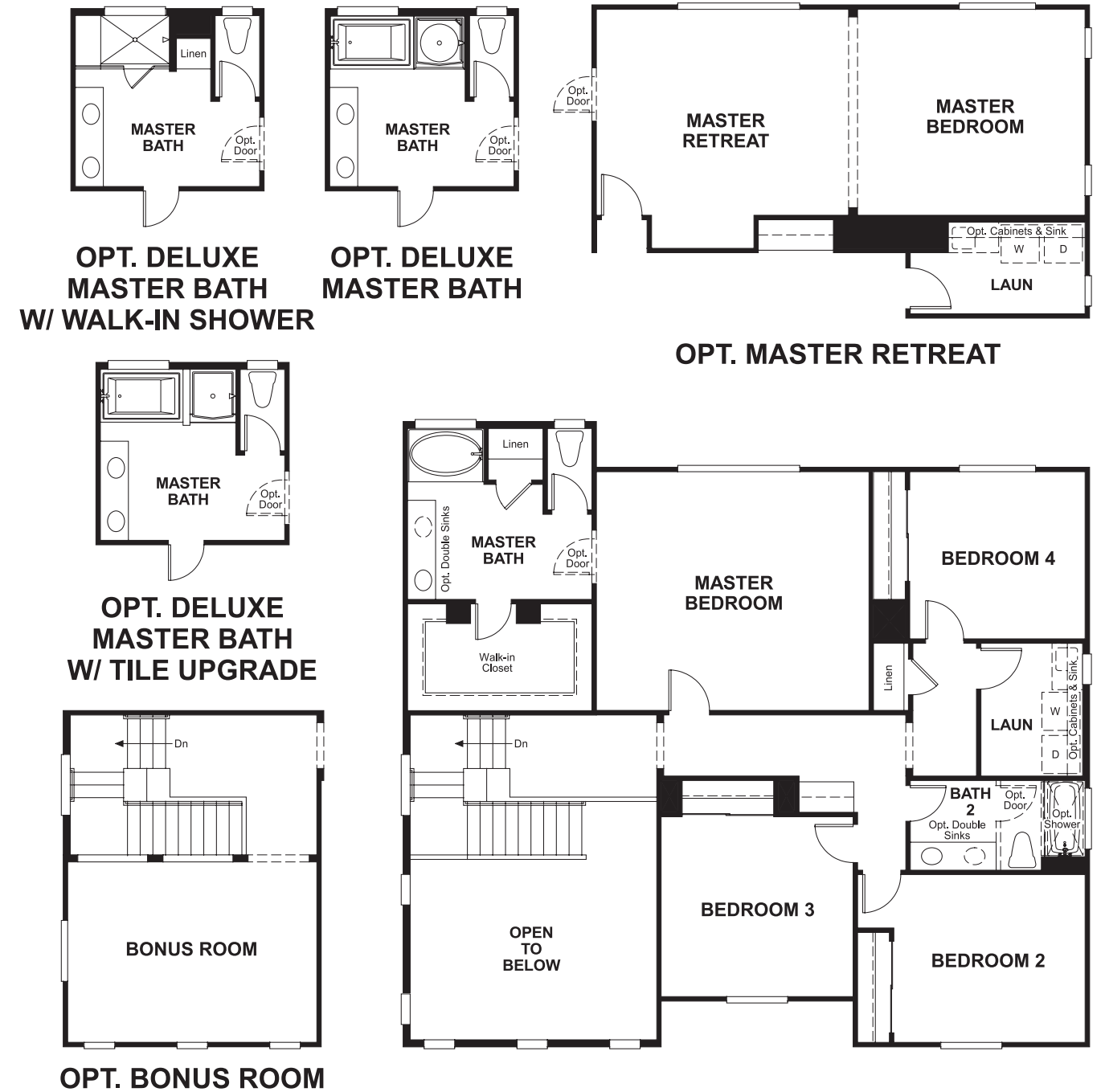
Approx. square feet: 2,650
Stories: 2
Bedrooms: 5

Garage: 3-car
Plan Number: S560

Floor Plan
Main Floor



Floor Plan
Second Floor



THIS PLAN'S PROJECTED HERS® INDEX = 67*
Projected Rating Based on Plans – Field Confirmation Required

How does this floor plan rate?
Take a look: 100 = Standard new home* 130 = Typical resale home**
The lower the number, the better! Refer to the RESNET® HERS index brochure or go to www.RESNET.us for details.

What's a HERS® Index? HERS stands for Home Energy Rating System, a system created by RESNET® to measure home energy efficiency.[^]
A Projected HERS index or rating is a computer simulation performed prior to construction by a third-party HERS rater using RESNET-accredited rating software, rated feature and specification data derived from home plans, features and specifications, and other data selected or assumed by the rater. The projected HERS index is approximate and is subject to change without notice. Actual results will vary.

*This information is presented for education purposes only. The HERS index for a confirmed rating will be determined by a third-party HERS rater based on data gathered from on-site observations and, if required, testing of rated features for a home as featured, optioned, located, oriented and/or built.
+Standard new home is based on the RESNET® Reference Home definition with a HERS® index of 100 (based on the 2006 International Energy Conservation Code).
**Typical resale home is based on the U.S. Department of Energy definition with a HERS® index of 130.

[^]RESNET® has developed the HERS® index to indicate the comparative efficiencies of homes. It is no guarantee that energy efficiencies will be achieved.