

Willow at Spencer's Crossing
TRACY



Elevation A

Approx. square feet: 3,450
Stories: 2
Bedrooms: 5 - 6
Garage: 3-car
Plan Number: S34T

Emphasizing your comfort, the Tracy features a main floor anchored by a great room that faces the open kitchen and breakfast nook. An adaptable main-floor bedroom adds an extra layer of convenience. Upstairs are a loft area and master suite with walk-in closet. Attractive options include a gourmet kitchen, butler's pantry and deluxe master bath.

Available elevations:



Elevation A



Elevation B



Elevation C

COMMUNITY LOCATION
30872 Windflower Lane
Murrieta, CA 92536
951-926-9246

HOME GALLERY
5171 California Ave Suite 110
Irvine, CA 92617
800-852-9714



COMMUNITY LOCATION
30872 Windflower Lane
Murrieta, CA 92536
951-926-9246

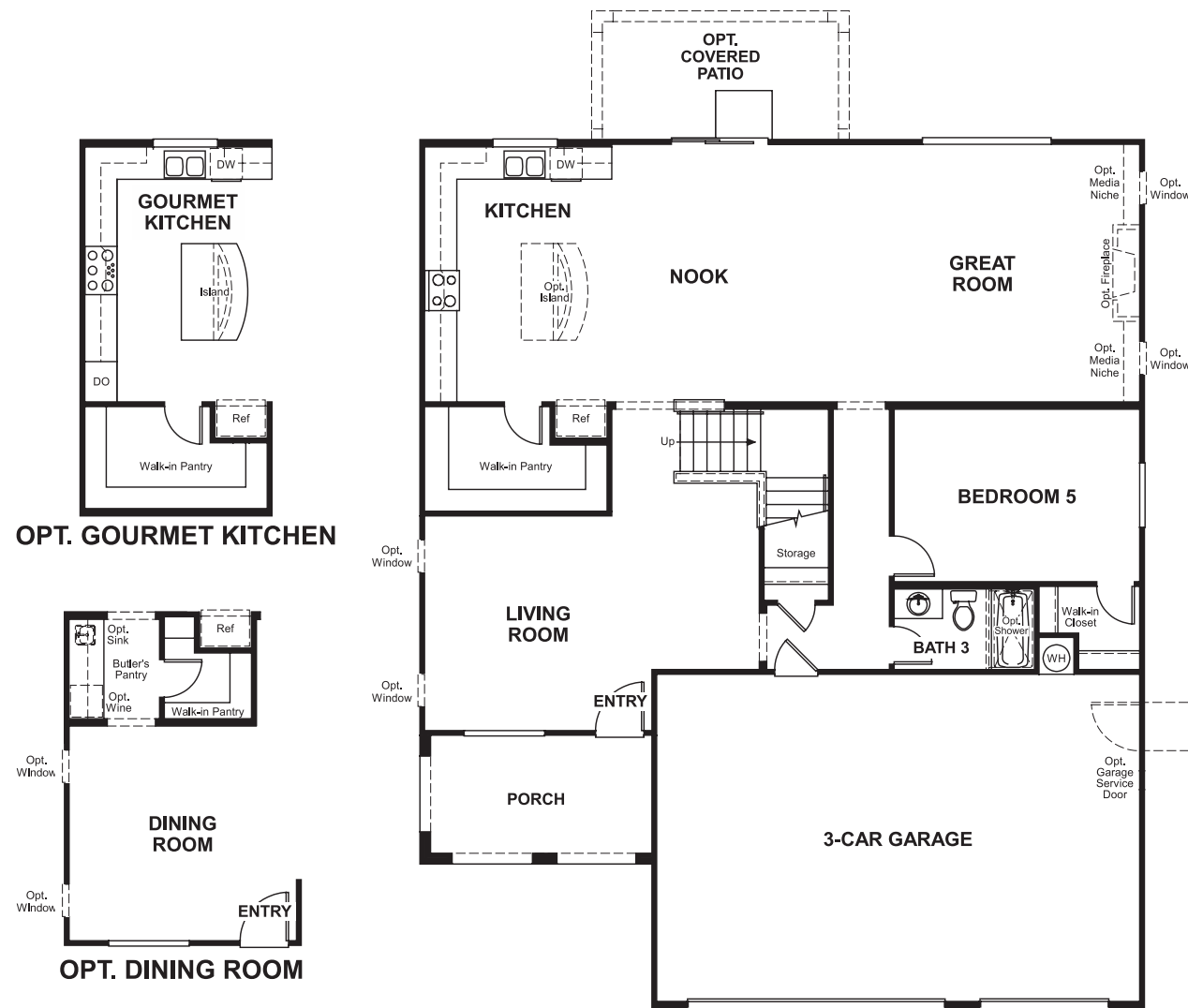
HOME GALLERY
5171 California Ave Suite 110
Irvine, CA 92617
800-852-9714

Willow at Spencer's Crossing
TRACY

Approx. square feet: 3,450
Stories: 2
Bedrooms: 5-6

Garage: 3-car
Plan Number: S34T

Floor Plan
First Floor



Floor Plan
Second Floor



THIS PLAN'S PROJECTED HERS® INDEX = 75 *
Projected Rating Based on Plans – Field Confirmation Required

How does this floor plan rate?
Take a look: **100** = Standard new home* **130** = Typical resale home**
The lower the number, the better! Refer to the RESNET® HERS index brochure or go to www.RESNET.us for details.

What's a HERS® Index? HERS stands for Home Energy Rating System, a system created by RESNET® to measure home energy efficiency.[^]
A Projected HERS index or rating is a computer simulation performed prior to construction by a third-party HERS rater using RESNET-accredited rating software, rated feature and specification data derived from home plans, features and specifications, and other data selected or assumed by the rater. The projected HERS index is approximate and is subject to change without notice. Actual results will vary.

*This information is presented for education purposes only. The HERS index for a confirmed rating will be determined by a third-party HERS rater based on data gathered from on-site observations and, if required, testing of rated features for a home as featured, optioned, located, oriented and/or built.
+Standard new home is based on the RESNET® Reference Home definition with a HERS® index of 100 (based on the 2006 International Energy Conservation Code).
++Typical resale home is based on the U.S. Department of Energy definition with a HERS® index of 130.

[^]RESNET® has developed the HERS® index to indicate the comparative efficiencies of homes. It is no guarantee that energy efficiencies will be achieved.