

Verona Estates
TRACY



Elevation A

Approx. square feet: 3,450
Stories: 2
Bedrooms: 4 - 6
Garage: 3-car
Plan Number: L34T

In addition to the spacious kitchen and deluxe master bath, the versatile Tracy plan offers an optional main-floor bedroom and full bath in lieu of the study and powder room, an upstairs bedroom and bath in place of the loft and an optional dining room with butler's pantry.

Available elevations:



Elevation A



Elevation B



Elevation C

COMMUNITY LOCATION

7360 Zonal Ave
 Las Vegas, NV 89131
 702-638-4440

HOME GALLERY

7770 South Dean Martin Drive, Suite 308
 Las Vegas, NV 89139
 702-617-8400



COMMUNITY LOCATION

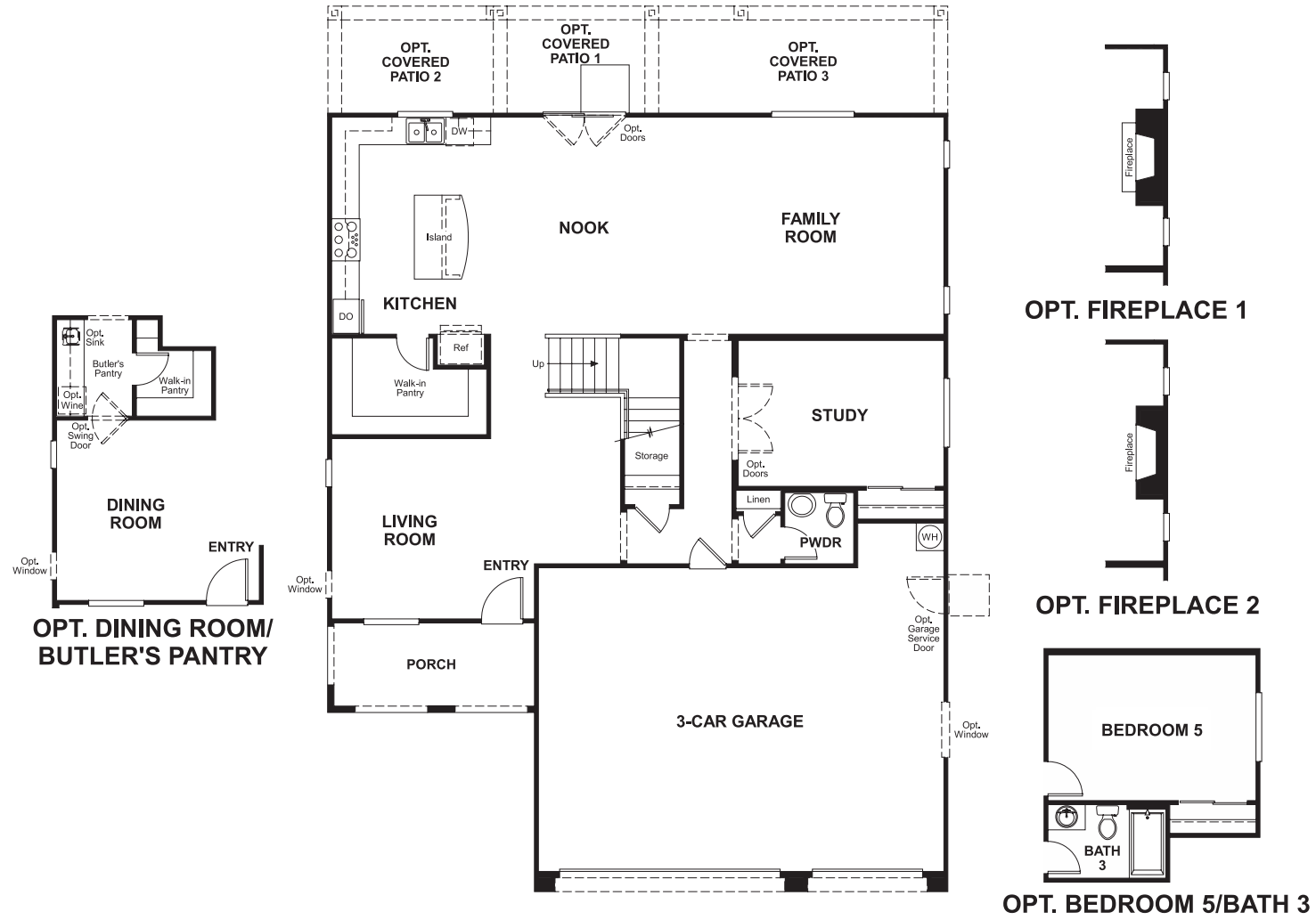
7360 Zonal Ave
 Las Vegas, NV 89131
 702-638-4440

HOME GALLERY

7770 South Dean Martin Drive, Suite 308
 Las Vegas, NV 89139
 702-617-8400



Floor Plan
Main Floor



Floor Plan
Second Floor

