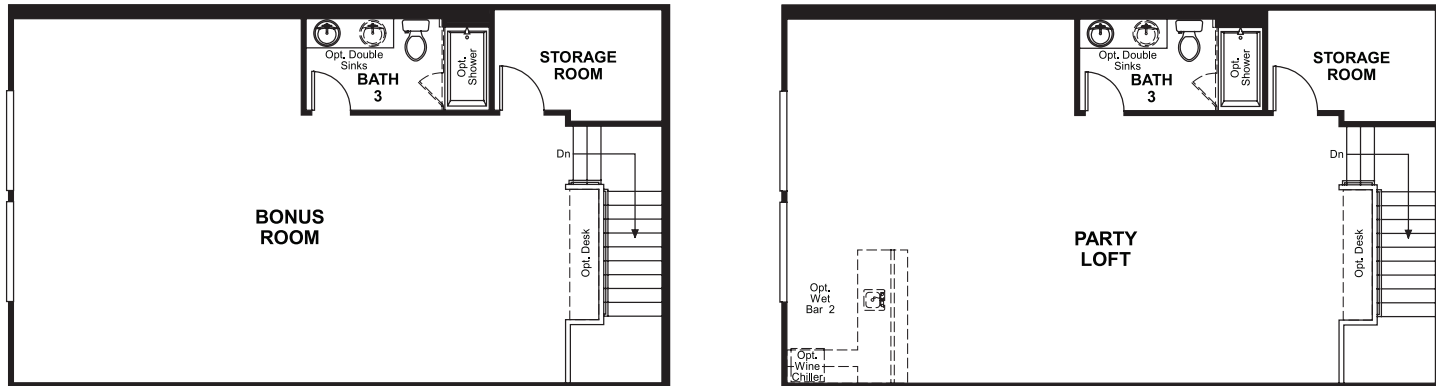


Granite Falls  
**PAISLEY**

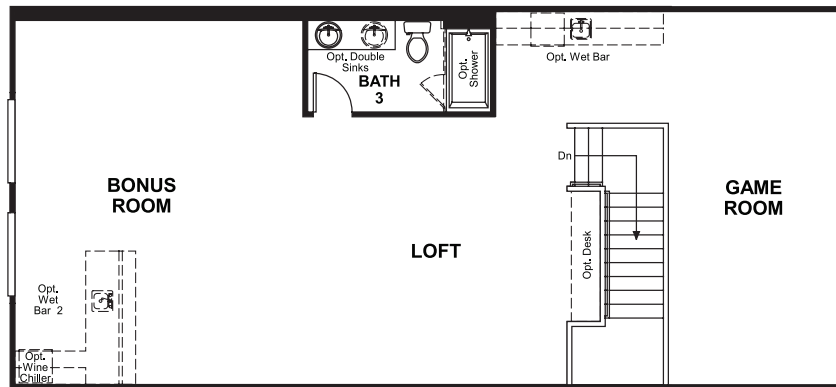
**Approx. square feet:** 3,300  
**Stories:** 2  
**Bedrooms:** 3 - 6

**Garage:** 2- to 3-car  
**Plan Number:** L35P

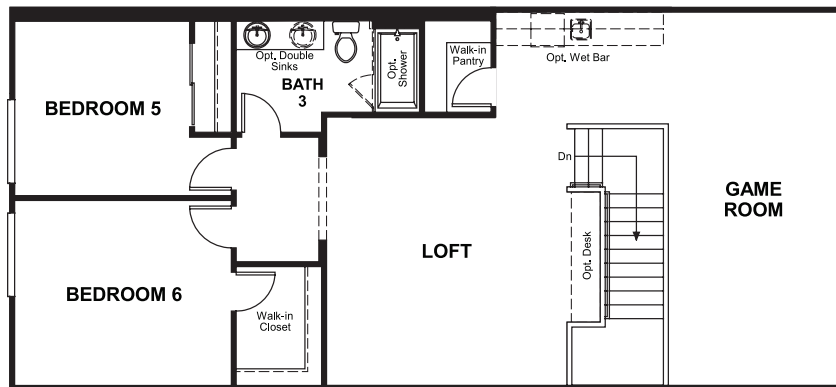
**Floor Plan**  
Second Floor



**OPT. PARTY LOFT**



**OPT. GAME ROOM**



**OPT. BEDROOM 5 & 6 w/ GAME ROOM**

**COMMUNITY LOCATION**  
5527 Powell Prairie Avenue  
Las Vegas, NV 89085  
702-638-4440

**HOME GALLERY**  
7770 South Dean Martin Drive, Suite 308  
Las Vegas, NV 89139  
702-617-8400



Granite Falls  
**PAISLEY**

**Approx. square feet:** 3,300  
**Stories:** 2  
**Bedrooms:** 3 - 6  
**Garage:** 2- to 3-car  
**Plan Number:** L35P

The Paisley offers the convenience of a ranch-style plan, plus a bonus loft upstairs for added entertaining space. Highlights include a quiet study, an inviting great room with optional fireplace and a spacious gourmet kitchen with breakfast nook and adjacent covered patio. The relaxing master suite includes an expansive walk-in closet and deluxe master bath, and is separated from two additional bedrooms for privacy. Personalization options include a dining room in lieu of the study.



**Elevation A**

**Available elevations:**



**Elevation A**



**Elevation B**



**Elevation C**

**COMMUNITY LOCATION**  
5527 Powell Prairie Avenue  
Las Vegas, NV 89085  
702-638-4440

**HOME GALLERY**  
7770 South Dean Martin Drive, Suite 308  
Las Vegas, NV 89139  
702-617-8400

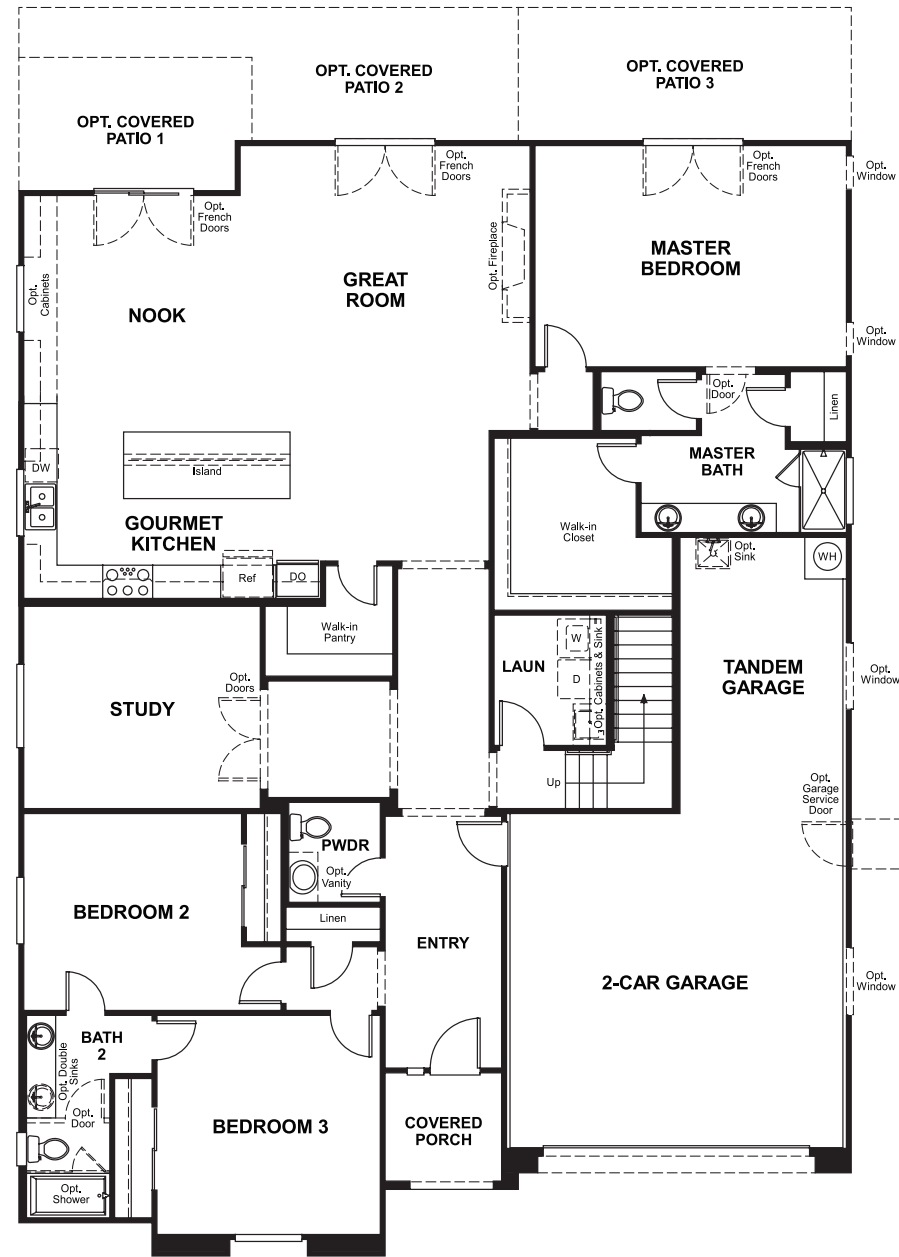


Granite Falls  
**PAISLEY**

Approx. square feet: 3,300  
Stories: 2  
Bedrooms: 3 - 6

Garage: 2- to 3-car  
Plan Number: L35P

**Floor Plan**  
Main Floor



**Floor Plan**  
Main Floor Options

